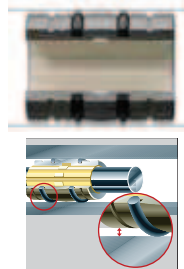


Structure – part no.
R J U M - 03-16



Special properties

- Closed aluminium housing with reduced outer diameter, spherical area on the outer diameter, O-rings for elastic seating and hard anodized surface
- Dimensions otherwise equivalent to standard recirculating ball bearings
- Fitted with JUM-01 liner made of iglidur® J
- Recommended housing bore (d2) H7
- Recommended tolerance for the shaft: h6–h10 (see igus® shafts ► **chap. 65**)
- Secured by DIN 471 or 472 circlips (not included in delivery)
- Also available with following liners:
 - XUM-01: for high temperatures, material iglidur® X – Example: RXUM-03-16
 - JUM-11: with reduced maximum bearing clearance, material iglidur® J – Example: RJUM-13-16



* According to igus® testing method

► **Page 64.37**

** Nominal diameter under 10 mm are delivered with pressfit sleeve bearings
Available from stock



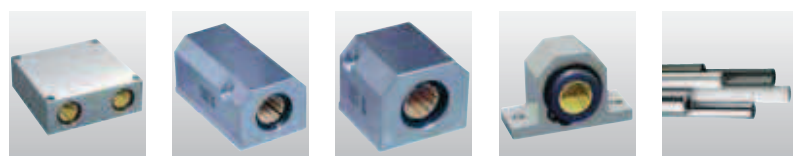
Inner Diameter, Load Capacity and Weight

Part No.	Shaft Ø [mm]	Housing-Bore, Ø H7 [mm]	Tolerance* Bearing Inner Diameter [mm]	pmax. [N] Dynamic Load P = 5 MPa	pmax. [N] Static Load P = 35 MPa	Weight [g]
RJZM-03-08**	8	16	0,032 - 0,070	960	6720	8
RJUM-03-10	10	19	0,030 - 0,088	725	5075	11
RJUM-03-12	12	22	0,030 - 0,088	960	6720	17
RJUM-03-16	16	26	0,030 - 0,088	1440	10080	23
RJUM-03-20	20	32	0,030 - 0,091	2250	15750	44
RJUM-03-25	25	40	0,030 - 0,091	3625	25375	92
RJUM-03-30	30	47	0,040 - 0,110	5100	35700	145
RJUM-03-40	40	62	0,040 - 0,115	8000	56000	311
RJUM-03-50	50	75	0,050 - 0,130	12500	87500	542

Dimensions [mm]

Part No.	d1 [mm]	d2 [mm]	B [mm]	B1 [mm]	s [mm]	dn [mm]	ds [mm]	do [mm]	o [mm]	e [mm]	R [mm]
		h8	h10	H10	H10	h10	h10		+0,1		
RJZM-03-08**	8	15,8	24,9	16,4	1,10	15,0	15,5	13,2	1,86	5,0	20,0
RJUM-03-10	10	18,8	28,9	21,8	1,30	17,5	18,5	15,4	1,86	5,0	13,0
RJUM-03-12	12	21,8	31,9	22,8	1,30	20,5	21,5	18,4	1,86	6,0	18,0
RJUM-03-16	16	25,8	35,9	24,9	1,30	24,2	25,5	20,4	2,86	8,0	32,0
RJUM-03-20	20	31,8	44,8	31,5	1,60	29,6	31,5	26,4	2,86	10,0	50,0
RJUM-03-25	25	39,8	57,8	44,1	1,85	36,5	39,5	34,4	2,86	12,5	39,0
RJUM-03-30	30	46,7	67,8	52,1	1,85	43,5	46,0	41,4	2,86	15,0	57,0
RJUM-03-40	40	61,7	79,8	60,9	2,15	57,8	61,0	56,4	2,86	20,0	100,0
RJUM-03-50	50	74,7	99,8	78,0	2,65	70,5	74,0	69,4	2,86	25,0	157,0

Plain bearings of series RJUM-03 can be combined with:



- RQA-03:** ► P. 64.38
- RTA-03:** ► P. 64.40
- RGA-03:** ► P. 64.42
- RGAS-03:** ► P. 64.44
- Shafts:** ► Chapter 65



DryLin® R

mm

Phone +49 - 22 03 - 96 49-145
Fax +49 - 22 03 - 96 49-334

