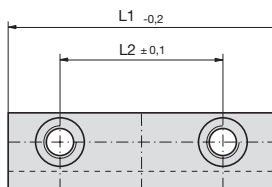


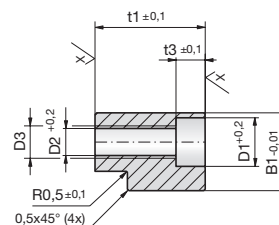
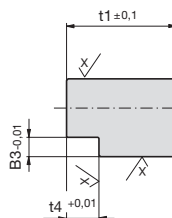
Führungsleisten

Guide strips

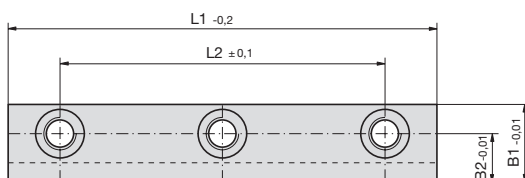
Barres de guidage



Type A



$$X/\sqrt{R_z 6,3}$$



Type B

Z4244-

Mat.: ST
58 +2HRC

Z4244-B1-t1-L1



5

B1	t1	L1	Type	B2	B3	t3	t4	L2	D1	D2	D3
15	21	50	A	9	3	5,7	10	30	10	5,3	M6
15	21	60	A	9	3	5,7	10	40	10	5,3	M6
15	21	70	B	9	3	5,7	10	50	10	5,3	M6
15	21	75	B	9	3	5,7	10	60	10	5,3	M6
15	21	80	B	9	3	5,7	10	60	10	5,3	M6
15	21	90	B	9	3	5,7	10	70	10	5,3	M6
18	35	80	A	11	4	6,8	13	56	11	6,8	M8
18	35	100	A	11	4	6,8	13	76	11	6,8	M8
18	35	120	B	11	4	6,8	13	96	11	6,8	M8
18	35	140	B	11	4	6,8	13	116	11	6,8	M8
18	35	160	B	11	4	6,8	13	136	11	6,8	M8
24	51	100	A	15	6	9,0	15	68	15	8,5	M10
24	51	120	A	15	6	9,0	15	88	15	8,5	M10
24	51	140	B	15	6	9,0	15	108	15	8,5	M10
24	51	160	B	15	6	9,0	15	128	15	8,5	M10
24	51	180	B	15	6	9,0	15	148	15	8,5	M10
30	65	120	A	18	6	11,0	15	80	18	10,5	M12
30	65	140	A	18	6	11,0	15	100	18	10,5	M12
30	65	160	B	18	6	11,0	15	120	18	10,5	M12
30	65	180	B	18	6	11,0	15	140	18	10,5	M12
30	65	200	B	18	6	11,0	15	160	18	10,5	M12

