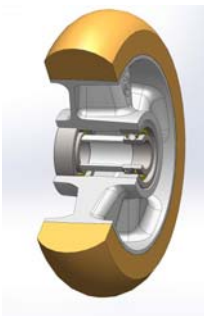


SERIES 65ER



**THICK “TR” POLYURETHANE WHEELS WITH ERGONOMIC ROUND PROFILE,
ALUMINIUM CENTRE,
SWIVEL TOP PLATE BRACKET TYPE P**

Wheel description



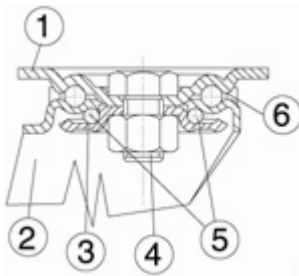
Tread: Thick TR polyurethane wheels with round ergonomic profile, hardness 95 Shore A.

Centre: cast aluminium

Hub: the housing is obtained by moulding and contains ball bearings series Z.

Bracket description

Medium-heavy duty bracket type P (max. carrying capacity 750 daN)



- 1) **Plate:** electrolytically galvanised steel plate
 - 2) **Fork:** electrolytically galvanised steel plate
 - 3) **Ball Racing Ring:** electrolytically galvanised steel plate
 - 4) **King Pin:** steel screw class 8.8 and nut
 - 5) **Swivel actions:** double ring of greased balls
 - 6) **Dust seal:** red polyamide
- Finishing:** yellow galvanisation
Fitting: top plate