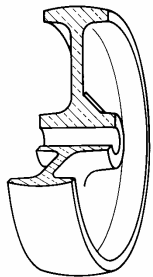


## SERIES 68P



**POLYAMIDE 6 SOLID WHEELS FOR HEAVY LOADS  
SWIVEL TOP PLATE BRACKET TYPE EE MHD WITH NON-  
TRAIL ADJUSTABLE BRAKE**

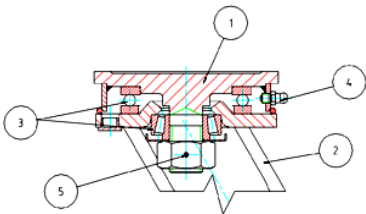
### Wheel description



**Tread:** polyamide 6 solid wheels for heavy loads.  
**Hub:** available with plain bore and ball bearings.

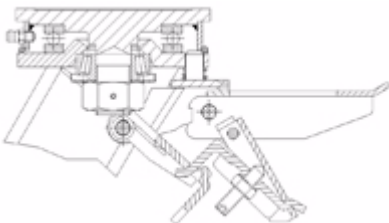
### Bracket description

**EE Medium Heavy Duty bracket (max. load capacity 900 daN)**



1) **Plate:** forged steel with integrated pin  
2) **Fork:** drawn sides electrowelded to the flange  
3) **Swivel actions:** axial ball bearing and taper roller bearing  
4) **Lubricator**  
5) **Nut anti-loosening system**  
**Finish:** electrolytic galvanisation  
**Fitting:** top plate

### Brake description



#### Rear adjustable brake

Double-action brake that locks the wheel and the castor at the same time. The brake is efficient and easy to use: a simple top-to-bottom movement using the tip of the foot on two independent pedals is all that's needed to engage and release the lock quickly and smoothly. Locking force can be adjusted using an M8 socket screw.