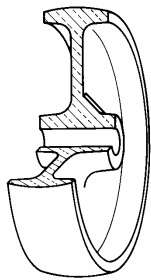


SERIES 68



SOLID POLYAMIDE 6 WHEELS SWIVEL STEM BRACKET TYPE "NL" WITH BRAKE

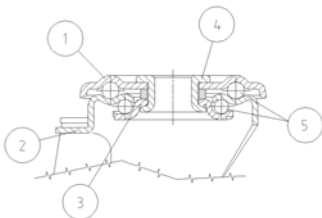
Wheel description



Tread: solid polyamide 6 wheels.
Hub: the hub is available with plain bearing.

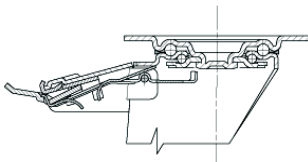
Bracket description

Standard duty bracket type NL (max. carrying capacity 400 daN)



1) **Plate:** electrolytically galvanised steel plate
2) **Fork:** electrolytically galvanised steel plate
3) **Ball Racing Ring:** electrolytically galvanised steel plate
4) **King Pin:** incorporated in top plate and cold riveted
5) **Swivel actions:** double ring of greased balls
Finishing: electrolytic galvanisation
Fitting: stem

Brake description



Diam. 80-150 mm

Front-locking brake

This brake fully locks wheel and castor rotation.
Thanks to its optimised dimensions and fold-away pedal, the brake is easy to engage and extremely compact.
The hardened carbon steel spring has very high corrosion resistance.



Diam. 150-200 mm