

通用配件 - 紧固部分

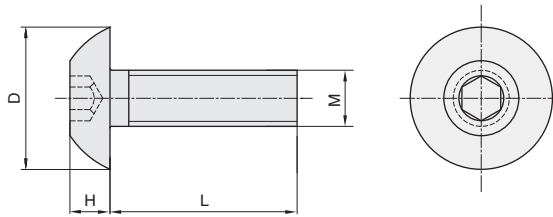
内六角平圆头螺钉

■内六角平圆头螺钉



库存

材质	表面处理
碳钢	镀锌
不锈钢	-



09
通用配件

代号		M	L	D	H	参考重量 (g)
碳钢镀锌	不锈钢					
PSHF-M4-12-D	PSHF-M4-12-B	M4	12	7.6	2.2	1.28
PSHF-M4-20-D	PSHF-M4-20-B		20			1.98
PSHF-M5-8-D	PSHF-M5-8-B	M5	8	9.5	2.75	1.81
PSHF-M5-10-D	PSHF-M5-10-B		10			1.99
PSHF-M5-12-D	PSHF-M5-12-B		12			2.17
PSHF-M5-16-D	PSHF-M5-16-B		16			2.48
PSHF-M5-20-D	PSHF-M5-20-B		20			3.02
PSHF-M5-25-D	PSHF-M5-25-B		25			3.72
PSHF-M6-10-D	PSHF-M6-10-B	M6	10	10.5	3.3	3.21
PSHF-M6-12-D	PSHF-M6-12-B		12			3.14
PSHF-M6-16-D	PSHF-M6-16-B		16			4.16
PSHF-M6-20-D	PSHF-M6-20-B		20			4.53
PSHF-M6-25-D	PSHF-M6-25-B		25			4.91
PSHF-M6-30-D	PSHF-M6-30-B		30			5.36
PSHF-M8-16-D	PSHF-M8-16-B	M8	16	14	4.4	8.11
PSHF-M8-18-D	PSHF-M8-18-B		18			8.56
PSHF-M8-20-D	PSHF-M8-20-B		20			9.33
PSHF-M8-25-D	PSHF-M8-25-B		25			9.92
PSHF-M8-30-D	PSHF-M8-30-B		30			12.3
PSHF-M8-40-D	PSHF-M8-40-B		40			15