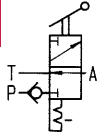


No. 6904-50

Seat Valve 3/2

max. operating pressure 500 bar,
min. operating pressure 10 bar.



Order no.	Article no.	NG	Q [l/min]	Weight [g]
271031	6904-50	6	12	444

Design:

Design: Seat valve
Type of actuation: manual

Application:

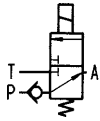
For single acting cylinders. CETOP 3 adaptation.



No. 6904-52

Seat Valve 3/2

max. operating pressure 500 bar,
min. operating pressure 10 bar.



Order no.	Article no.	NG	Q [l/min]	Weight [g]
259242	6904-52	6	12	740

Design:

Design: Seat valve
Type of actuation: electric

Application:

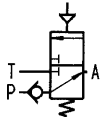
For single acting cylinders. CETOP 3 adaptation.



No. 6904-54

Seat Valve 3/2

max. operating pressure 500 bar,
min. operating pressure 10 bar.



Order no.	Article no.	NG	Q [l/min]	Weight [g]
267427	6904-54	6	12	459

Design:

Design: Seat valve
Type of actuation: pneumatic

Application:

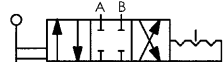
For single acting cylinders. CETOP 3 adaptation.



No. 6904-59

Directional valve 4/3

max. operating pressure 700 bar,
min. operating pressure 10 bar.



NEW!

Order no.	Article no.	NG	Q [l/min]	Weight [g]
563516	6904-59-01	6	30	380

Design:

Design: Piston valve
Type of actuation: manual

Application:

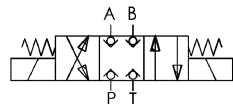
For double acting cylinders. CETOP 3 adaptation.



No. 6911A-07-01

Seat Valve, 4/3-Way

for O-ring joint,
max. operating pressure 400 bar,
min. operating pressure 10 bar.



Order no.	Article no.	NG	Q [l/min]	OR-1 O-ring Order No.	Viscosity [cSt]	U [V DC]	Weight [g]
322065	6911A-07-01	6	20	493478	10-500	24	2356

Application:

For double acting cylinders. CETOP 3 adaptation.

Note:

Further information can be found under Accessories/Valves.



No. 6904-90

Air filter and pressure regulator



Order no.	Article no.	Air connection	Weight [g]
258236	6904-90	G 1/4	740

Application:

For Air-Hydraulic Pump 6904-20 or -25.

Subject to technical alterations.