

## No. 6916-04

### Line Check Valve

max. operating pressure 630 bar.



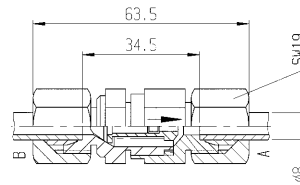
Order no.	Article no.	Q [l/min]	Differenz p at flow [bar]	Ambient temp. [°C]	Aperture pressure [bar]	Weight [g]
62885	6916-04	12	3	-20 - +90	1	110

#### Design:

Housing made of steel, surface galvanized. Sealing cone spring loaded with O-ring sealing. Seals made of Perbunan.

#### Note:

The direction of flow is indicated on the hex nut housing by means of an arrow. The pipe connection is sealed by means of a cutting ring.



## No. 6916-05/06

### Threaded Check Valve

max. operating pressure 630 bar.



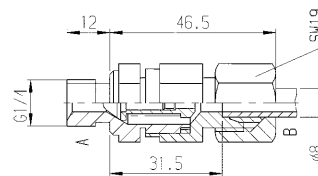
Order no.	Article no.	Q [l/min]	Direction of flow	Differenz p at flow [bar]	Ambient temp. [°C]	Aperture pressure [bar]	Weight [g]
62901	6916-05	12	A - B	3	-20 - +90	1	95
62968	6916-06	12	B - A	3	-20 - +90	1	95

#### Design:

Housing made of steel, surface galvanized. Sealing cone spring loaded with O-ring sealing. Sealings made of Perbunan.

#### Note:

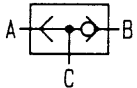
The direction of flow is indicated on the hex nut housing by means of an arrow. On the threaded side sealing is done by means of a sealing edge and on the pipe side the valve is sealed by means of a cutting ring.



## No. 6916-07

### Shuttle Valve

max. operating pressure 630 bar.



Order no.	Article no.	Q [l/min]	Direction of flow	Differenz p at flow [bar]	Ambient temp. [°C]	Weight [g]
62984	6916-07	18	A-C / B-C	12	-20 - +100	160

#### Design:

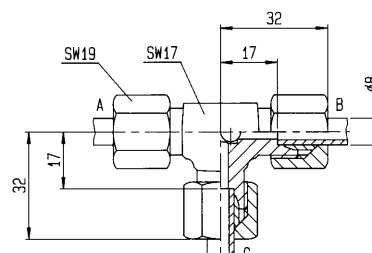
Housing made of steel, surface galvanized. Ball seat valve type.

#### Application:

By means of two input connections which can be shut and an output connection the alternating valve connects A or B with C according to the present pressurized line; the other connection is closed by means of a ball.

#### Note:

Attention: The hydraulic line empties itself when not under pressure. The pipe connection is sealed by means of a cutting ring.



Subject to technical alterations.