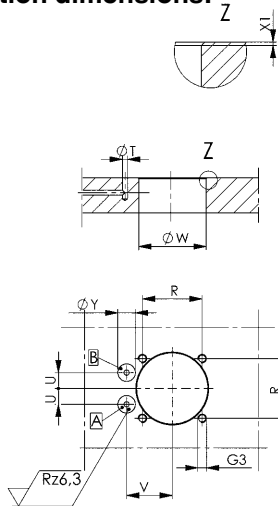


## Installation dimensions:



| Order no. | Article no. | G3 x depth | R ±0,2 | dia. T | U  | V    | dia. W | X1        | dia. Y x max. depth |
|-----------|-------------|------------|--------|--------|----|------|--------|-----------|---------------------|
| 327486    | 6942KK-25   | M5 x 13    | 34     | 3      | 9  | 26,0 | 40,5   | 0,5 x 45° | 10 x 0,1            |
| 328484    | 6942KK-32   | M5 x 13    | 40     | 3      | 11 | 30,0 | 48,5   | 0,5 x 45° | 10 x 0,1            |
| 328492    | 6942KK-38   | M6 x 14    | 47     | 3      | 12 | 33,5 | 55,5   | 0,5 x 45° | 10 x 0,1            |
| 328583    | 6942KK-45   | M6 x 13    | 55     | 3      | 15 | 39,5 | 65,5   | 0,5 x 45° | 10 x 0,1            |
| 552012    | 6942KK-56   | M8 x 17    | 63     | 3      | 16 | 45,0 | 75,5   | 0,5 x 45° | 10 x 0,1            |
| 327569    | 6942KK-25L  | M5 x 13    | 34     | 3      | 9  | 26,0 | 40,5   | 0,5 x 45° | 10 x 0,1            |
| 328500    | 6942KK-32L  | M5 x 13    | 40     | 3      | 11 | 30,0 | 48,5   | 0,5 x 45° | 10 x 0,1            |
| 328518    | 6942KK-38L  | M6 x 14    | 47     | 3      | 12 | 33,5 | 55,5   | 0,5 x 45° | 10 x 0,1            |
| 328609    | 6942KK-45L  | M6 x 13    | 55     | 3      | 15 | 39,5 | 65,5   | 0,5 x 45° | 10 x 0,1            |
| 552014    | 6942KK-56L  | M8 x 17    | 63     | 3      | 16 | 45,0 | 75,5   | 0,5 x 45° | 10 x 0,1            |
| 327585    | 6942KK-25R  | M5 x 13    | 34     | 3      | 9  | 26,0 | 40,5   | 0,5 x 45° | 10 x 0,1            |
| 328526    | 6942KK-32R  | M5 x 13    | 40     | 3      | 11 | 30,0 | 48,5   | 0,5 x 45° | 10 x 0,1            |
| 328534    | 6942KK-38R  | M6 x 13    | 55     | 3      | 12 | 33,5 | 55,5   | 0,5 x 45° | 10 x 0,1            |
| 328625    | 6942KK-45R  | M6 x 13    | 55     | 3      | 15 | 39,5 | 65,5   | 0,5 x 45° | 10 x 0,1            |
| 552013    | 6942KK-56R  | M8 x 17    | 63     | 3      | 16 | 45,0 | 75,5   | 0,5 x 45° | 10 x 0,1            |

## No. 6942KL-xx-04

### Clamping arm



CAD

| Order no. | Article no.  | Piston force F5 at 100 bar [kN] | Clamping force F1 at 100 bar [kN] | B    | C    | dia. D | dia. E | G    | H  | H7  | K    | L     | N    | O  | P    | R    | SW  | SW1 | Weight [g] |
|-----------|--------------|---------------------------------|-----------------------------------|------|------|--------|--------|------|----|-----|------|-------|------|----|------|------|-----|-----|------------|
| 326850    | 6942KL-25-04 | 4,9                             | 3,2                               | 16,0 | 24,0 | 8      | 6      | 50,0 | 6  | 0,5 | 9,5  | 51,00 | 26,2 | M4 | 12,0 | 6,00 | 2,0 | 7   | 46         |
| 328542    | 6942KL-32-04 | 8,0                             | 5,3                               | 18,5 | 28,0 | 10     | 8      | 50,0 | 8  | 0,5 | 11,5 | 59,25 | 30,2 | M4 | 13,5 | 6,75 | 2,0 | 7   | 76         |
| 328559    | 6942KL-38-04 | 11,3                            | 7,5                               | 21,0 | 31,5 | 12     | 10     | 47,5 | 9  | 0,0 | 12,0 | 67,50 | 34,9 | M5 | 16,0 | 8,00 | 2,5 | 8   | 99         |
| 328641    | 6942KL-45-04 | 15,9                            | 10,5                              | 24,5 | 37,0 | 16     | 12     | 52,5 | 14 | 1,0 | 17,0 | 80,00 | 39,6 | M6 | 19,0 | 9,50 | 3,0 | 10  | 195        |
| 552015    | 6942KL-56-04 | 25,5                            | 17,0                              | 30,0 | 45,0 | 16     | 12     | 52,5 | 16 | 1,0 | 19,0 | 96,00 | 48,6 | M8 | 22,0 | 9,50 | 4,0 | 13  | 311        |

### Design:

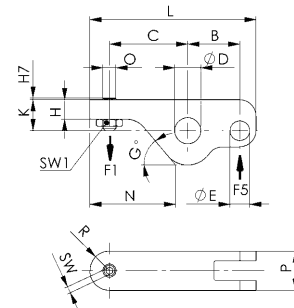
Hardened, tempered and burnished steel. Supplied with compression screw.

### Application:

For link clamp 6942KK.

### Note:

Clamping pressure, leverage, flow volume and clamp arm weight must always be observed.



## No. 6942KR-xx-14

### Clamping arm blank



CAD

| Order no. | Article no.  | B    | C  | dia. D | dia. E | G    | K    | L     | N    | P    | Weight [g] |
|-----------|--------------|------|----|--------|--------|------|------|-------|------|------|------------|
| 326975    | 6942KR-25-14 | 16,0 | 44 | 8      | 6      | 50,0 | 9,5  | 65,0  | 40,3 | 12,0 | 64         |
| 328567    | 6942KR-32-14 | 18,5 | 50 | 10     | 8      | 50,0 | 12,5 | 74,5  | 46,3 | 13,5 | 101        |
| 328575    | 6942KR-38-14 | 21,0 | 58 | 12     | 10     | 47,5 | 12,0 | 86,0  | 53,4 | 16,0 | 130        |
| 328666    | 6942KR-45-14 | 24,5 | 68 | 16     | 12     | 52,5 | 14,0 | 101,5 | 61,1 | 19,0 | 222        |
| 552016    | 6942KR-56-14 | 30,0 | 70 | 16     | 12     | 52,5 | 19,0 | 110,0 | 62,6 | 22,0 | 377        |

### Design:

Hardened, tempered and burnished steel.

### Application:

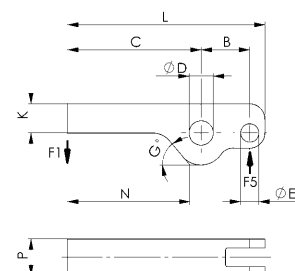
For link clamp 6942KK.

### Note:

Clamping pressure, leverage, flow volume and clamp arm weight must always be observed.

Formula to determine the clamping force F1:

Clamping force = F1 [kN], piston force = F5 [kN], operating lever = B [mm], load lever = C [mm]  
 $F1 = F5 \times B / C$



Subject to technical alterations.