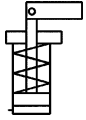


No. 6958Sx-16

Vertical Clamp

Single-acting, with spring return, max. operating pressure 350 bar, min. operating pressure 40 bar.



Order no.	Article no.	Piston force at 100 bar [kN]	Piston force at 350 bar [kN]	Vol. [cm ³]	Piston dia. [mm]	Piston area [cm ²]	OR-1 O-ring Order No.	Weight [g]
322248	6958SU-16	2,0	7,0	1,9	16	2	334821	280
322255	6958ST-16	2,0	7,0	1,9	16	2	334821	290

Design:

Cylinder body from steel, burnished. Piston rod nitrided. Wiper at piston rod. Built-in return spring. Supply scope includes clamping lever pin, but not clamping lever. Oil supply via oil channel in fixture body.

Application:

This vertical clamp can be used for clamping in cavities or in very tight spaces.

Features:

Small dimensions, can be installed closely spaced side-by-side. The clamping levers can be exchanged easily in the installed position.

Note:

Screws according to ISO4762 M6, strength class 12.9, lightly oiled, tightening torque $M_d = 18 \text{ Nm}$ not supplied as standard.

During unclamping, the vertical clamp allows a **max. dynamic pressure of 3 bar**, which must be strictly taken into account when using control valves.

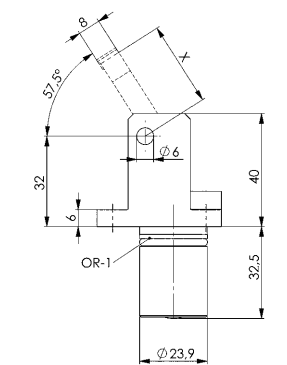


322248

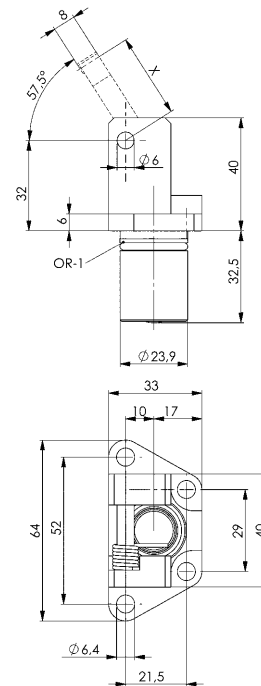


322255

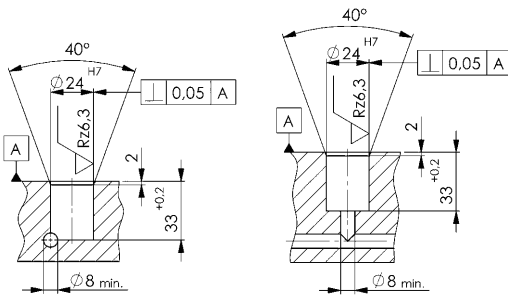
322248



322255



Installation dimensions:



CAD



Subject to technical alterations.