

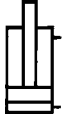
N° 6926D



CAD

Cilindro tipo bloque con conexión de junta tórica por el lado del vástago

de doble efecto,
Presión de servicio máx. 500 bar,
Presión de servicio mín. 25 bar.



| Nº de pedido | Artículo nº | Fuerza de compresión a 100 bares [kN] | Fuerza de compresión a 500 bares [kN] | Fuerza de tracción a 100 bares [kN] | Fuerza de tracción a 500 bares [kN] | Carrera H [mm] | Vol. de presión [cm³] | Vol. de tracción [cm³] | Émbolo-Ø [mm] | Peso [g] |
|--------------|--------------|---------------------------------------|---------------------------------------|-------------------------------------|-------------------------------------|----------------|-----------------------|------------------------|---------------|----------|
| 349696 | 6926D-8-30 | 2,0 | 10,0 | 1,2 | 6,0 | 16 | 3,2 | 1,9 | 16 | 820 |
| 477554 | 6926D-8-31 | 2,0 | 10,0 | 1,2 | 6,0 | 50 | 10,0 | 6,0 | 16 | 1330 |
| 328153 | 6926D-8-35 | 2,0 | 10,0 | 1,2 | 6,0 | 100 | 20,0 | 12,0 | 16 | 2200 |
| 461434 | 6926D-12-30 | 3,1 | 15,5 | 1,6 | 8,0 | 16 | 5,0 | 3,2 | 20 | 880 |
| 328393 | 6926D-12-31 | 3,1 | 15,5 | 1,6 | 8,0 | 50 | 15,5 | 10,0 | 20 | 1380 |
| 328179 | 6926D-12-35 | 3,1 | 15,5 | 1,6 | 8,0 | 100 | 31,0 | 20,0 | 20 | 2300 |
| 299487 | 6926D-20-30 | 5,0 | 25,0 | 2,9 | 14,5 | 20 | 9,8 | 5,8 | 25 | 1220 |
| 347575 | 6926D-20-31 | 5,0 | 25,0 | 2,9 | 14,5 | 50 | 25,0 | 14,5 | 25 | 1800 |
| 328195 | 6926D-20-35 | 5,0 | 25,0 | 2,9 | 14,5 | 100 | 50,0 | 29,0 | 25 | 3100 |
| 299339 | 6926D-32-30 | 8,0 | 40,0 | 4,9 | 24,5 | 25 | 20,0 | 12,2 | 32 | 1990 |
| 452821 | 6926D-32-31 | 8,0 | 40,0 | 4,9 | 24,5 | 50 | 40,0 | 24,5 | 32 | 2630 |
| 454975 | 6926D-32-35 | 8,0 | 40,0 | 4,9 | 24,5 | 100 | 80,0 | 49,0 | 32 | 4500 |
| 456160 | 6926D-50-30 | 12,5 | 62,5 | 7,6 | 38,0 | 25 | 31,4 | 19,1 | 40 | 2760 |
| 328419 | 6926D-50-31 | 12,5 | 62,5 | 7,6 | 38,0 | 50 | 62,5 | 38,0 | 40 | 3590 |
| 328211 | 6926D-50-35 | 12,5 | 62,5 | 7,6 | 38,0 | 100 | 125,0 | 76,0 | 40 | 5800 |
| 489567 | 6926D-78-30 | 19,6 | 98,0 | 11,6 | 58,0 | 25 | 49,0 | 29,0 | 50 | 4380 |
| 334847 | 6926D-78-31 | 19,6 | 98,0 | 11,6 | 58,0 | 50 | 98,0 | 58,0 | 50 | 5520 |
| 328237 | 6926D-78-35 | 19,6 | 98,0 | 11,6 | 58,0 | 100 | 196,0 | 116,0 | 50 | 8500 |
| 328252 | 6926D-125-30 | 31,1 | 155,5 | 18,6 | 93,0 | 30 | 93,5 | 55,8 | 63 | 7900 |
| 328278 | 6926D-125-31 | 31,1 | 155,5 | 18,6 | 93,0 | 63 | 196,0 | 117,0 | 63 | 9280 |
| 328294 | 6926D-125-35 | 31,1 | 155,5 | 18,6 | 93,0 | 100 | 311,0 | 186,0 | 63 | 14500 |

Acabado:

Cuerpo del cilindro en acero pavonado.
Émbolo y vástago del émbolo templados por cementación y rectificadas. Junta doble y rascador contra la penetración de suciedad. Vástago del émbolo con rosca interior.
Suministro de aceite mediante canal de aceite en el cuerpo del dispositivo.

Características:

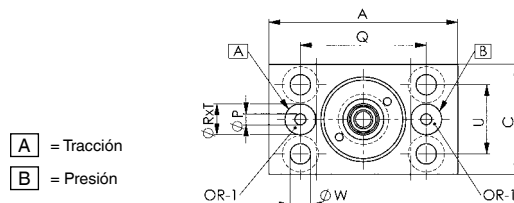
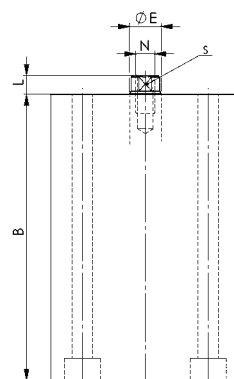
Múltiples posibilidades de montaje mediante los orificios de fijación.
Cada modelo está disponible con tres carreras diferentes.

Nota:

Para ello, es recomendable el uso de tornillos de la clase 12.9. En caso de tolerancias no indicadas, referirse a la norma DIN ISO 2768 (media).

Sobre demanda:

Tamaños diferentes disponibles bajo pedido.



A = Tracción
B = Presión

Tabla de medidas:

| Nº de pedido | Artículo nº | A | B | C | ØE | L | N x Profundidad | ØP | Q | ØR x T | S | U | ØW | OR-1 Junta tórica nº ped. |
|--------------|--------------|-----|-----|----|----|----|-----------------|-----|----|----------|----|----|------|---------------------------|
| 349696 | 6926D-8-30 | 60 | 56 | 35 | 10 | 6 | M6x12 | 3,5 | 40 | 9,8x1,1 | 8 | 22 | 6,5 | 537969 |
| 477554 | 6926D-8-31 | 60 | 91 | 35 | 10 | 6 | M6x12 | 3,5 | 40 | 9,8x1,1 | 8 | 22 | 6,5 | 537969 |
| 328153 | 6926D-8-35 | 60 | 144 | 35 | 10 | 6 | M6x12 | 3,5 | 40 | 9,8x1,1 | 8 | 22 | 6,5 | 537969 |
| 461434 | 6926D-12-30 | 60 | 61 | 35 | 14 | 7 | M8x15 | 3,5 | 40 | 9,8x1,1 | 10 | 22 | 6,5 | 537969 |
| 328393 | 6926D-12-31 | 60 | 95 | 35 | 14 | 7 | M8x15 | 3,5 | 40 | 9,8x1,1 | 10 | 22 | 6,5 | 537969 |
| 328179 | 6926D-12-35 | 60 | 148 | 35 | 14 | 7 | M8x15 | 3,5 | 40 | 9,8x1,1 | 10 | 22 | 6,5 | 537969 |
| 299487 | 6926D-20-30 | 65 | 64 | 45 | 16 | 7 | M10x15 | 4,0 | 50 | 9,8x1,1 | 13 | 30 | 8,5 | 537969 |
| 347575 | 6926D-20-31 | 65 | 94 | 45 | 16 | 7 | M10x15 | 4,0 | 50 | 9,8x1,1 | 13 | 30 | 8,5 | 537969 |
| 328195 | 6926D-20-35 | 65 | 144 | 45 | 16 | 7 | M10x15 | 4,0 | 50 | 9,8x1,1 | 13 | 30 | 8,5 | 537969 |
| 299339 | 6926D-32-30 | 75 | 75 | 55 | 20 | 10 | M12x15 | 5,0 | 55 | 9,8x1,1 | 17 | 35 | 10,5 | 537969 |
| 452821 | 6926D-32-31 | 75 | 100 | 55 | 20 | 10 | M12x15 | 5,0 | 55 | 9,8x1,1 | 17 | 35 | 10,5 | 537969 |
| 454975 | 6926D-32-35 | 75 | 150 | 55 | 20 | 10 | M12x15 | 5,0 | 55 | 9,8x1,1 | 17 | 35 | 10,5 | 537969 |
| 456160 | 6926D-50-30 | 85 | 79 | 63 | 25 | 10 | M16x25 | 6,0 | 63 | 9,8x1,1 | 22 | 40 | 10,5 | 537969 |
| 328419 | 6926D-50-31 | 85 | 104 | 63 | 25 | 10 | M16x25 | 6,0 | 63 | 9,8x1,1 | 22 | 40 | 10,5 | 537969 |
| 328211 | 6926D-50-35 | 85 | 154 | 63 | 25 | 10 | M16x25 | 6,0 | 63 | 9,8x1,1 | 22 | 40 | 10,5 | 537969 |
| 489567 | 6926D-78-30 | 100 | 90 | 75 | 32 | 10 | M20x30 | 6,0 | 76 | 10,8x1,1 | 27 | 45 | 13,0 | 161554 |
| 334847 | 6926D-78-31 | 100 | 115 | 75 | 32 | 10 | M20x30 | 6,0 | 76 | 10,8x1,1 | 27 | 45 | 13,0 | 161554 |
| 328237 | 6926D-78-35 | 100 | 165 | 75 | 32 | 10 | M20x30 | 6,0 | 76 | 10,8x1,1 | 27 | 45 | 13,0 | 161554 |
| 328252 | 6926D-125-30 | 125 | 102 | 95 | 40 | 14 | M27x40 | 8,0 | 95 | 13,8x1,5 | 36 | 65 | 17,0 | 492264 |
| 328278 | 6926D-125-31 | 125 | 135 | 95 | 40 | 14 | M27x40 | 8,0 | 95 | 13,8x1,5 | 36 | 65 | 17,0 | 492264 |
| 328294 | 6926D-125-35 | 125 | 172 | 95 | 40 | 14 | M27x40 | 8,0 | 95 | 13,8x1,5 | 36 | 65 | 17,0 | 492264 |



Se reserva el derecho de cambios técnicos.