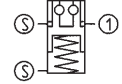


## No. 6109L-02

### Installation clamping module with sensor query for opening and interlock

Pneumatic opening.  
 Opening operating pressure: min. 6 bar - max. 14 bar.  
 Cover and piston hardened.  
 Case: Aluminium.  
 Repetition accuracy < 0.02 mm.



Order no.	Size	Pull-in/locking force up to	Holding force*	Weight
		[N]	[N]	[g]
559089	K02	235	6000	51

### Application:

Zero-point clamping system for automation solutions for set-up-time-optimised clamping during cutting and non-cutting machining.

### Note:

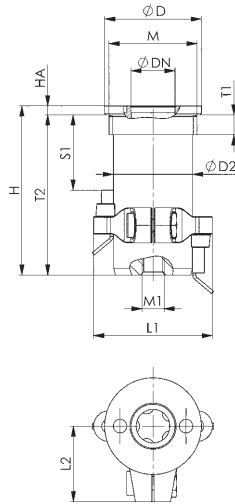
The installation clamping module has high holding, pull-in and locking forces. This is opened pneumatically (1) and locked mechanically through spring force. Subsequent uncoupling of the pressure lines is possible at any time (module is clamped pressure-free).

The clamping module has one connection:  
 1 = pneum. opening

The installation clamping module with sensor query contains the fastening kit order no. 559403. It has two reed sensors with connection cables (Ø 0.75 mm, cable length 100 mm) for status check opened / locked and a fastening clamp.

For simple installation of the installation clamping module, we recommend the AMF pin wrench, order no. 50914.

\* Please observe the installation instructions.



### Accessories



No. 6203ZN-02, page 125

### Dimensions:

Order no.	Size	dia. D	dia. DN	dia. D2	H	HA	L1	L2	M	M1	S1	T1	T2
559089	K02	22	10	18	38,5	2,05	27	17,2	M20x1,5	M5	17	4,5	36,45

## No. 6109ZB-01

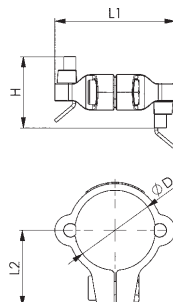
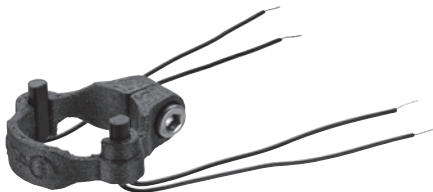
### Fastening kit with sensors

Suitable for installation clamping module K02 with sensor query.

Order no.	Size	dia. D	H	L1	L2	Weight
						[g]
559403	K02	18	16	27	17,2	4

### Note:

The fastening kit contains two reed sensors with connection cables (Ø 0.75 mm, cable length 100 mm) for status check opened / locked and a fastening clamp. This kit can be fastened to the clamping module K02 with sensor query.



Subject to technical alterations.