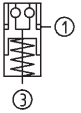


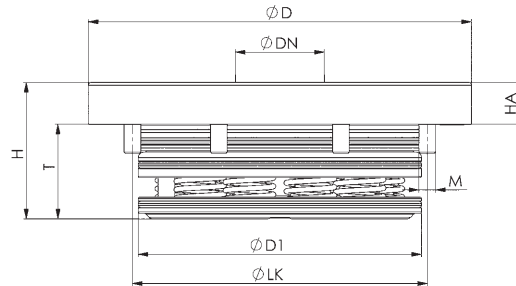
## No. 6206LA

### Installation clamping module

Pneumatic opening.  
 Pneumatic blow-out.  
 Opening operating pressure:  
 K5.3 min. 5 bar - max. 12 bar.  
 K10.3 min. 5 bar - max. 12 bar.  
 K20.3 min. 4.5 bar - max. 12 bar.  
 Cover and piston hardened.  
 Repeat accuracy < 0.005 mm.



**ZERO-POINT CLAMPING  
 FROM 4.5 BAR**



Order no.	Size	Pull-in/locking force up to	Holding force*	Blow out	Weight
		[kN]	[kN]		[Kg]
553152	K5.3	1,5	13	●	0,5
428730	K10.3	10,0	25	●	1,4
428755	K20.3	17,0	55	●	2,6

### Application:

Zero-point clamping system for set-up-time-optimised clamping during cutting and non-cutting machining.

### Note:

The installation clamping module has high holding, pull-in and locking forces. This is opened pneumatically (1) and mechanically locked through spring force. Subsequent uncoupling of the pressure lines is possible at all times (module is tensioned pressure-free).  
 The clamping module with blow-out and support control has two connections:  
 1x pneum. opening (1), 1x pneum. blow-out and support control (3). (The pneumatic blow-out and support control can optionally be connected.)  
 \* Please observe the installation instructions.

### On request:

- Installation diagrams

### Dimensions:

Order no.	Size	dia. D	dia. DN	dia. D1	H	HA	dia. LK	M	T
553152	K5.3	78	15	54,5	29	8	62	6xM4	21
428730	K10.3	112	22	78,0	35	10	88	6xM6	25
428755	K20.3	138	32	102,0	49	15	115	8xM6	34

