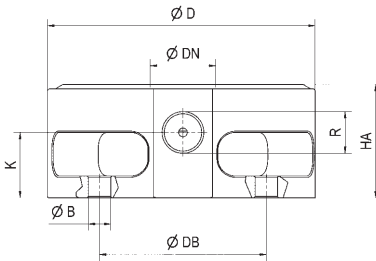


No. 6370AARH

Surface-mounted clamping module

Hydraulic opening.
Opening operating pressure: min. 50 bar - max. 60 bar.
Cover and piston hardened.
Repeatability < 0.005 mm.



Order no.	Size	Pull-in/locking force up to	Holding force*	Weight
		[kN]	[kN]	[g]
306159	K 5	5	13	300

Application:

Zero-point clamping system for set-up-time-optimised clamping during cutting and non-cutting machining.

Note:

The surface-mounted clamping module has high holding, pull-in and locking forces. This is opened hydraulically (1) and mechanically locked through spring force. Subsequent uncoupling of the pressure lines is possible at all times (module is tensioned pressure-free).
The contact surface is the upper surface of the housing.
The clamping module has one connection: 1x hydr. opening (1).
* Please observe the installation instructions.

On request:

- Individual housing



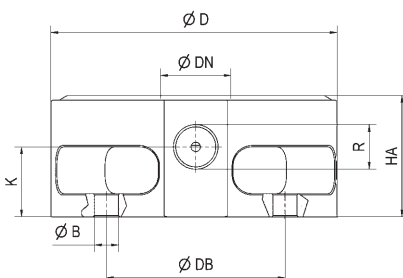
Dimensions:

Order no.	Size	dia. B	dia. D	dia. DB	dia. DN	HA	K	R
306159	K 5	5,8	62	54	15	26	15	G1/8

No. 6370AARL

Surface-mounted clamping module

Pneumatic opening.
Opening operating pressure: min. 8 bar - max. 12 bar.
Retensioning operating pressure (turbo): min. 5 bar - max. 6 bar.
Cover and piston hardened.
Repeatability < 0.005 mm.



Order no.	Size	Pull-in/locking force up to	Holding force*	Weight
		[kN]	[kN]	[g]
306175	K 5	1,5	13	300

Application:

Zero-point clamping system for set-up-time-optimised clamping during cutting and non-cutting machining.

Note:

The surface-mounted clamping module has high holding, pull-in and locking forces. This is opened pneumatically (1) and mechanically locked through spring force. To achieve the specified pull-in and locking forces, it must be briefly retensioned pneumatically (turbo) (2). Subsequent uncoupling of the pressure lines is possible at all times (module is tensioned pressure-free).
The contact surface is the upper surface of the housing.
Use of the pneumatic pressure booster 6370ZVL is recommended.
The clamping module has two connections:
1x pneum. opening (1) / 1x pneum. retensioning (turbo) (2).
* Please observe the installation instructions.

On request:

- Individual housing



Dimensions:

Order no.	Size	dia. B	dia. D	dia. DB	dia. DN	HA	K	R
306175	K 5	5,8	62	54	15	26	15	G1/8

Subject to technical alterations.