

N° 6370ZB

Jeu de brides de fixation

Constitué de deux brides circulaires, nitruré.

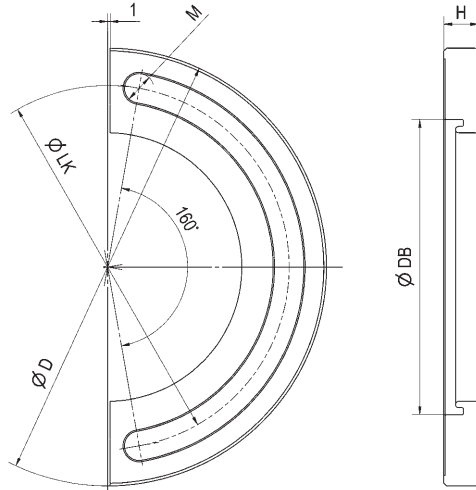
Code	Modèle	Contenu du kit [St]	ØD	ØDB	H	ØLK	M	Poids [g]
426825	K10	2	114	77,5	7,75	94	8,5	360
426833	K20	2	164	110,0	13,00	136	11,0	800
426841	K40	2	202	146,0	16,00	172	13,0	1100

Utilisation:

Les brides de fixation servent à la fixation de modules de serrage à poser sur la table machine.

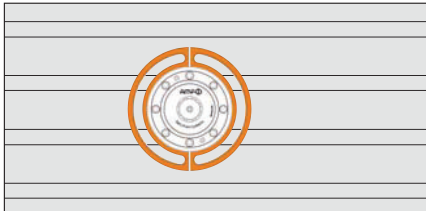
Sur demande:

- Bride de serrage spéciale pour diverses tables à rainures en T
- Bride de fixation et boîtier à poser monobloc

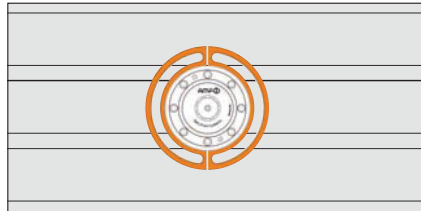


Exemples de montages sur table de machine:

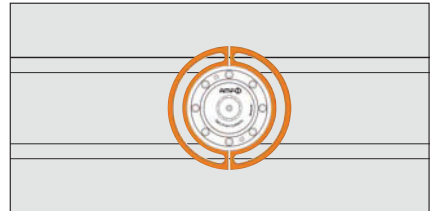
K10 - Entraxe des rainures 50 mm



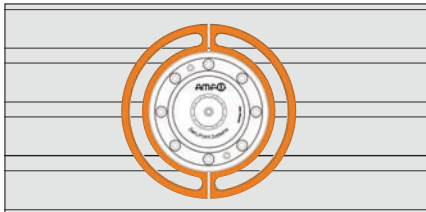
Entraxe des rainures 63 mm



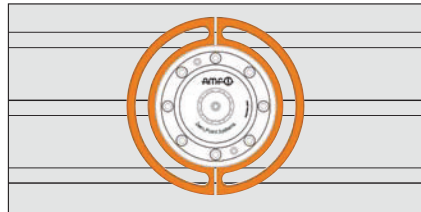
Entraxe des rainures 80 mm



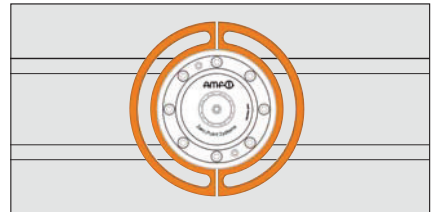
K20 - Entraxe des rainures 50 mm



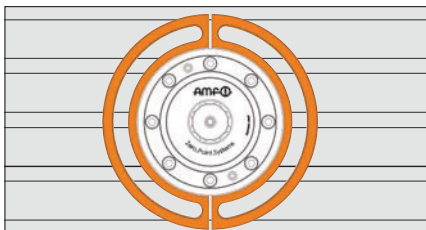
Entraxe des rainures 63 mm



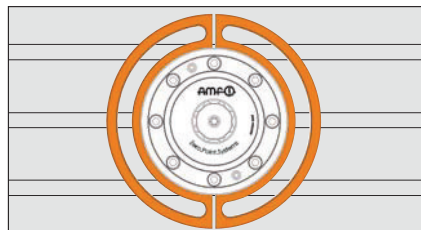
Entraxe des rainures 80 mm



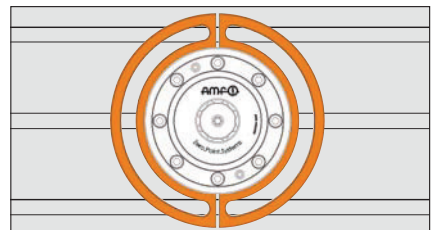
K40 - Entraxe des rainures 50 mm



Entraxe des rainures 63 mm



Entraxe des rainures 80 mm



Sous réserve de modifications techniques.