

ANACONDA MULTIFLEX CONDUIT TYPE SLI



Flexible and extra corrosion resistant

Type SLI is a less flexible but robust **stainless steel AISI 304** conduit, that provides high mechanical and chemical protection in applications that require a high degree of corrosion protection. Typical applications include the steel, foundry, marine and shipbuilding industries as well as machine building.



Square locked

Material & Construction:

Material: Stainless steel (AISI-304). Also available in AISI-316.

Construction: square-locked design.

Temperature: -100 °C till +600 °C.

Colour: Metal coloured.



Classification according NEN-EN-IEC 61386:

Compression resistance: Class 4, Heavy (1250 N).

Impact resistance: Class 4, Heavy (6 J).

Tensile strength: Class 4, Heavy (1000 N).

Protection class: IP 40.

SLI	Diameter		Bending radius (cl)		Small carton		Standard carton		Large carton		Weight (Kg/m)	
	Size	Inside	Outside	Static	Dynamic	Metre	Article No.	Metre	Article No.	Metre		Article No.
	Inch	(mm)	(mm)	(mm)	(mm)							
5/16"		10,1	12,8	50	65	30	600.010.2	-	-	-	-	0,15
3/8"		12,6	15,5	60	85	30	600.012.2	-	-	-	-	0,24
1/2"		16,0	18,9	75	110	30	600.016.2	-	-	-	-	0,26
3/4"		21,0	23,9	90	140	30	600.020.2	-	-	-	-	0,41
1"		26,5	30,0	120	170	30	600.026.2	-	-	-	-	0,55
1.1/4"		35,1	38,7	135	215	30	600.035.2	-	-	-	-	0,63

* For sizes 1.1/2" and 2" we advise to use the interlocked designed conduit type UI (see page 1-29)

* On demand the SLI conduits are available also in production reels with longer lengths (codes change in 600.xxx.0)

The fittings for SLI are outlined in on pages 1-12 till 1-17



Multiflex	1/4"	5/16"	3/8"	1/2"	3/4"	1"	1 1/4"	1 1/2"	2"	2 1/2"	3"	4"
ISO	M12-M16	M16-M20	M16-M20	M20	M25	M32	M40	M50	M63	M75	M90	M105
Pg	7	9 - 11	11 - 13,5	16	21	29	36	42	48	-	-	-
NPT	-	-	1/2"	1/2"	3/4"	1"	1 1/4"	1 1/2"	2"	2 1/2"	3"	4"

COMPACT FITTINGS FOR SL/SLI, IP 40, NICKEL PLATED BRASS



Anaconda compact nickel plated brass fittings for Multiflex SL / SLI

These nickel plated brass Anaconda compact fittings are the same as used in chapter 5 (compact Seallite). By replacing the standard polyamide clamping ring with a metal clamping ring (see below) they can be used in combination with SL and SLI conduits. By using the SLI clamping ring, a very high pull-out strength is achieved. The high quality finish of these nickel plated brass fittings protects them very well against corrosion and gives a nice appearance.

Material & Construction:

Construction: Nickel plated brass fitting, consisting of 4 parts (counter nut, clamping ring, ferrule and body).

Material: Counter nut, ferrule and body are nickel plated brass. The ferrule is from galvanised steel. O-rings are from NBR (black for ISO metric and blue for Pg).

Temperature: -55 °C till +260 °C continuous.

Protection class: IP 40.

Colour: Metal coloured.



Clamping ring, nickel plated brass, for combination with Multiflex type SL / SLI



Thread ISO	SL / SLI Size (Inch)	Min. Internal Bore (mm)	Fitting thread size			Standard Package	Article Number	Weight (Kg/100)
			ISO	Pg	NPT			
-	5/16"	-	M16 x 1,5	Pg 9	1/2" NPT	10	817.210.6	0,6
-	3/8"	-	M16 x 1,5	Pg 11	1/2" NPT	10	817.213.6	0,6
-	1/2"	-	M20 x 1,5	Pg 16	1/2" NPT	10	817.216.6	0,6
-	3/4"	-	M25 x 1,5	Pg 21	3/4" NPT	5	817.220.6	1,0
-	1"	-	M32 x 1,5	Pg 29	1" NPT	5	817.226.6	1,2
-	1.1/4"	-	M40 x 1,5	Pg 36	1.1/4" NPT	2	817.235.6	2,0

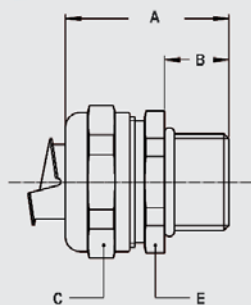
The above mentioned clamping rings for SL/SLI can be used with all types of compact fittings, as outlined in chapter 5.



ISO straight compact fitting, male, nickel plated brass (incl. metal clamping ring)



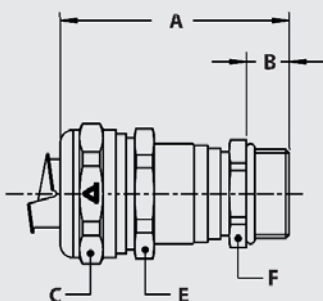
Thread ISO	SL / SLI Size (Inch)	Min. Internal Bore (mm)	Dimensions in mm					Standard Package	Article Number	Weight (Kg/100)
			A	B	C	D	E			
M16 x 1,5	5/16"	8,3	31	10	26	-	24	10	712.015.6	6,1
M20 x 1,5	5/16"	8,3	31	10	26	-	24	10	712.014.6	6,2
M16 x 1,5	3/8"	11,0	31	10	26	-	24	10	712.016.6	4,5
M20 x 1,5	3/8"	11,0	31	10	26	-	24	10	712.017.6	4,6
M20 x 1,5	1/2"	14,5	32	10	29	-	27	10	712.020.6	5,0
M25 x 1,5	3/4"	19,4	33	10	35	-	33	5	712.025.6	7,6
M32 x 1,5	1"	24,7	36	12	45	-	42	5	712.032.6	12,9
M40 x 1,5	1.1/4"	33,3	40	13	53	-	50	2	712.040.6	18,0



COMPACT FITTINGS FOR SL/SLI, IP 40, NICKEL PLATED BRASS



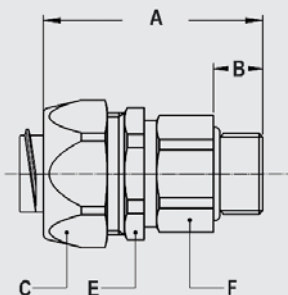
ISO cable-hose fitting, compact, male, double seal acc. EN 45545-2, HL1 / HL2 / HL 3, table R22 and R23 (incl. metal clamping ring)



Thread ISO	SL / SLI Size (Inch)	Clamping range (mm)	Dimensions in mm					Standard Package	Article Number	Weight (Kg/100)
			A	B	C	E	F			
M16 x 1,5	5/16"	4,0 - 8,3	50	10	26	24	18	10	712.715.6	9,0
M20 x 1,5	5/16"	4,0 - 8,3	50	10	26	24	22	10	712.714.6	9,6
M16 x 1,5	3/8"	4,0 - 9,5	50	10	26	24	18	10	712.716.6	7,4
M20 x 1,5	3/8"	4,0 - 9,5	50	10	26	24	22	10	712.717.6	8,0
M20 x 1,5	1/2"	6,0 - 13,0	53	10	29	27	22	10	712.720.6	8,2
M25 x 1,5	1/2"	6,0 - 13,0	54	10	29	27	27	5	712.722.6	9,6
M25 x 1,5	3/4"	10,0 - 18,0	56	10	35	33	27	5	712.725.6	12,7
M32 x 1,5	3/4"	10,0 - 18,0	58	12	35	33	35	5	712.728.6	16,0
M32 x 1,5	1"	16,0 - 24,7	61	12	45	42	35	5	712.732.6	21,5
M40 x 1,5	1"	16,0 - 24,7	63	13	45	42	43	2	712.735.6	25,7
M40 x 1,5	1.1/4"	22,0 - 32,0	69	13	53	50	43	2	712.740.6	30,6



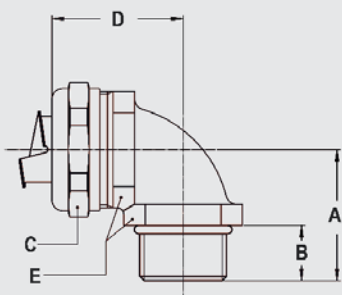
ISO straight swivel fitting, male, nickel plated brass (incl. metal clamping ring)



Thread ISO	SL / SLI Size (Inch)	Min. Internal Bore (mm)	Dimensions in mm					Standard Package	Article Number	Weight (Kg/100)
			A	B	C	E	F			
M16 x 1,5	5/16"	8,3	48	10	26	24	21	10	813.015.6	10,3
M16 x 1,5	3/8"	10,4	48	10	26	24	21	10	813.016.6	8,7
M20 x 1,5	1/2"	13,9	49	10	29	27	25	10	813.020.6	10,8
M25 x 1,5	3/4"	17,4	49	10	35	33	31	5	813.025.6	14,8
M32 x 1,5	1"	23,4	55	12	45	42	38	5	813.032.6	33,7
M40 x 1,5	1.1/4"	29,4	58	14	54	50	48	2	813.040.6	55,0



ISO 90° fitting, compact, male, nickel plated brass (incl. metal clamping ring)



Thread ISO	SL / SLI Size (Inch)	Min. Internal Bore (mm)	Dimensions in mm					Standard Package	Article Number	Weight (Kg/100)
			A	B	C	D	E			
M16 x 1,5	5/16"	8,3	26	10	26	31	22	10	712.915.6	8,8
M20 x 1,5	5/16"	8,3	26	10	26	32	24	10	712.914.6	10,1
M16 x 1,5	3/8"	11,0	26	10	26	31	22	10	712.916.6	7,2
M20 x 1,5	3/8"	11,0	26	10	26	32	24	10	712.917.6	8,5
M20 x 1,5	1/2"	14,5	28	10	29	34	27	10	712.920.6	9,8
M25 x 1,5	3/4"	19,4	32	10	35	40	33	5	712.925.6	17,2
M32 x 1,5	1"	24,7	40	12	45	49	42	5	712.932.6	29,0
M40 x 1,5	1.1/4"	33,3	46	13	53	53	52	2	712.940.6	42,1

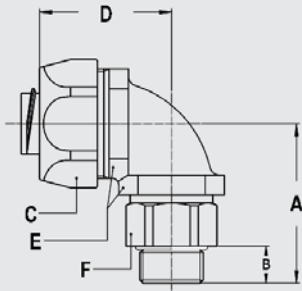
COMPACT FITTINGS FOR SL/SLI, IP 40, NICKEL PLATED BRASS



ISO 90° swivel fitting, compact, male, nickel plated brass
(incl. metal clamping ring)



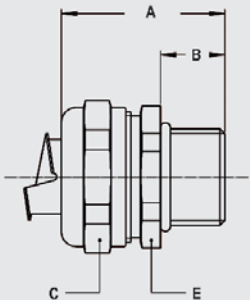
Thread ISO	SL / SLI Size (Inch)	Min. Internal Bore (mm)	Dimensions in mm						Standard Package	Article Number	Weight (Kg/100)
			A	B	C	D	E	F			
M16 x 1,5	5/16"	8,3	39	10	26	35	22	21	10	813.915.6	13,0
M16 x 1,5	3/8"	10,4	39	10	26	35	22	21	10	813.916.6	11,4
M20 x 1,5	1/2"	13,9	39	10	29	37	27	25	10	813.920.6	13,8
M25 x 1,5	3/4"	17,4	46	10	35	44	33	31	5	813.925.6	23,8
M32 x 1,5	1"	23,4	55	12	45	55	42	38	5	813.932.6	42,6



Pg straight compact fitting, male, nickel plated brass
(incl. metal clamping ring)



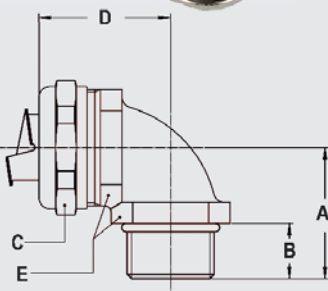
Thread Pg	SL / SLI Size (Inch)	Min. Internal Bore (mm)	Dimensions in mm					Standard Package	Article Number	Weight (Kg/100)
			A	B	C	D	E			
Pg 11	5/16"	8,3	31	10	26	-	24	10	710.012.6	6,2
Pg 13,5	5/16"	8,3	31	10	26	-	24	10	710.014.6	6,4
Pg 11	3/8"	11,0	31	10	26	-	24	10	710.011.6	4,6
Pg 13,5	3/8"	11,0	31	10	26	-	24	10	710.013.6	4,8
Pg 16	1/2"	14,5	32	10	29	-	27	10	710.016.6	5,1
Pg 21	3/4"	19,4	33	10	35	-	33	5	710.021.6	7,5
Pg 29	1"	24,7	36	12	45	-	44	5	710.029.6	13,4
Pg 36	1.1/4"	33,3	40	13	53	-	52	2	710.036.6	18,4



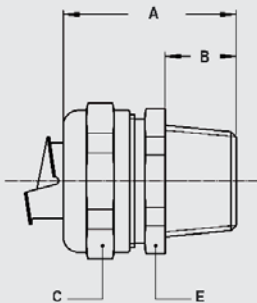
Pg 90° fitting, compact, male, nickel plated brass
(incl. metal clamping ring)



Thread Pg	SL / SLI Size (Inch)	Min. Internal Bore (mm)	Dimensions in mm					Standard Package	Article Number	Weight (Kg/100)
			A	B	C	D	E			
Pg 11	5/16"	8,3	26	10	26	32	24	10	710.912.6	9,9
Pg 13,5	5/16"	8,3	26	10	26	32	24	10	710.914.6	10,2
Pg 11	3/8"	11,0	26	10	26	32	24	10	710.911.6	8,3
Pg 13,5	3/8"	11,0	26	10	26	32	24	10	710.913.6	8,6
Pg 16	1/2"	14,5	28	10	29	34	27	10	710.916.6	9,8
Pg 21	3/4"	19,4	32	10	35	40	33	5	710.921.6	16,7
Pg 29	1"	24,7	40	12	45	49	42	5	710.929.6	29,8
Pg 36	1.1/4"	33,3	46	13	53	53	52	2	710.936.6	42,1



COMPACT FITTINGS FOR SL/SLI, IP 40, NICKEL PLATED BRASS

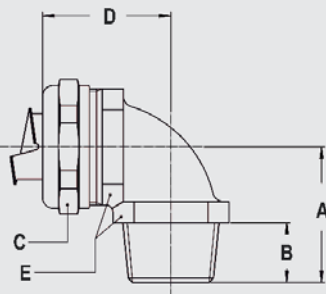


NPT straight compact fitting, male, nickel plated brass
(incl. metal clamping ring)



Thread NPT	SL / SLI Size (Inch)	Min. Internal Bore (mm)	Dimensions in mm					Standard Package	Article Number	Weight (Kg/100)
			A	B	C	D	E			
NPT 1/2"	3/8"	11,0	35	14	26	-	24	10	714.012.6	5,4
NPT 1/2"	1/2"	14,5	36	14	29	-	27	10	714.016.6	5,6
NPT 3/4"	3/4"	19,4	37	14	35	-	33	5	714.020.6	8,0
NPT 1"	1"	24,7	40	16	45	-	42	5	714.026.6	13,8
NPT 1.1/4"	1.1/4"	33,3	43	16	53	-	50	2	714.035.6	18,8

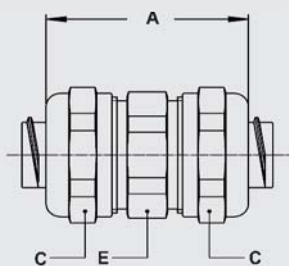
General Index
Anaconda
Multiflex



NPT 90° fitting, compact, male, nickel plated brass
(incl. metal clamping ring)



Thread NPT	SL / SLI Size (Inch)	Min. Internal Bore (mm)	Dimensions in mm					Standard Package	Article Number	Weight (Kg/100)
			A	B	C	D	E			
NPT 1/2"	3/8"	11,0	30	14	26	32	24	10	714.912.6	8,8
NPT 1/2"	1/2"	14,5	32	14	29	34	27	10	714.916.6	10,2
NPT 3/4"	3/4"	19,4	36	14	35	40	33	5	714.920.6	17,7
NPT 1"	1"	24,7	44	16	45	49	42	5	714.926.6	29,5
NPT 1.1/4"	1.1/4"	33,3	49	16	53	53	52	2	714.935.6	43,4



Conduit connector, nickel plated brass
(including metal clamping ring)



SL / SLI Size (Inch)	SL / SLI Size (Inch)	Min. Internal Bore (mm)	Dimensions in mm					Standard Package	Article Number	Weight (Kg/100)
A	B	C	D	E						
5/16"	5/16"	8,3	41	-	26	-	24	10	784.010.6	11,8
3/8"	3/8"	10,4	41	-	26	-	24	10	784.012.6	8,6
1/2"	1/2"	13,9	45	-	29	-	24	10	784.016.6	10,0
3/4"	3/4"	18,5	48	-	35	-	33	5	784.020.6	15,0
1"	1"	23,8	53	-	45	-	44	5	784.026.6	27,6
1.1/4"	1.1/4"	31,9	58	-	53	-	50	2	784.035.6	36,6

COMPACT FITTINGS FOR SLI, IP 40, STAINLESS STEEL AISI-304



Anaconda compact fittings, stainless steel AISI-304, for Multiflex SLI

These stainless steel AISI-304 Anaconda compact fittings are the same as used in chapter 5 (compact Sealite). By replacing the standard polyamide clamping ring with a metal clamping ring (see below) they can be used in combination with SL and SLI conduits. By using the SLI clamping ring, a very high pull-out strength is achieved. The high quality finish of these stainless steel fittings protects them excellent against corrosion and gives a nice appearance.



Material & Construction:

Construction: Stainless steel AISI-304 fitting, consisting of 4 parts (counter nut, clamping ring, ferrule and body).

Material: Counter nut, ferrule and body are stainless steel AISI-304. The clamping ring is made of nickel plated brass. O-rings are from NBR (black for ISO metric and blue for Pg).

Temperature: -55 °C till +260 °C continuous.

Protection class: IP 40.

Colour: Metal coloured.



Clamping ring, nickel plated brass, for combination with Multiflex type SLI



Thread	SLI Size (Inch)	Min. Internal Bore (mm)	Fitting thread size			Standard Package	Article Number	Weight (Kg/100)
			ISO	Pg	NPT			
-	3/8"	-	M16 x 1,5	Pg 11	1/2" NPT	10	817.213.6	0,6
-	1/2"	-	M20 x 1,5	Pg 16	1/2" NPT	10	817.216.6	0,6
-	3/4"	-	M25 x 1,5	Pg 21	3/4" NPT	5	817.220.6	1,0
-	1"	-	M32 x 1,5	Pg 29	1" NPT	5	817.226.6	1,2
-	1.1/4"	-	M40 x 1,5	Pg 36	1.1/4" NPT	2	817.235.6	2,0

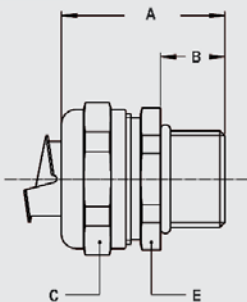
The above mentioned clamping rings for SLI can be used with all types of compact fittings, as outlined in chapter 5.



ISO straight compact fitting, male, stainless steel AISI-304 (incl. metal clamping ring)



Thread	SLI Size (Inch)	Min. Internal Bore (mm)	Dimensions in mm					Standard Package	Article Number	Weight (Kg/100)
			A	B	C	D	E			
M16 x 1,5	3/8"	11,0	31	10	26	-	24	10	712.016.96	4,5
M20 x 1,5	3/8"	11,0	31	10	26	-	24	10	712.017.96	4,6
M20 x 1,5	1/2"	14,5	32	10	29	-	27	10	712.020.96	5,0
M25 x 1,5	3/4"	19,4	33	10	35	-	33	5	712.025.96	7,6
M32 x 1,5	1"	24,7	36	12	45	-	42	5	712.032.96	12,9
M40 x 1,5	1.1/4"	33,3	40	13	53	-	50	2	712.040.96	18,0



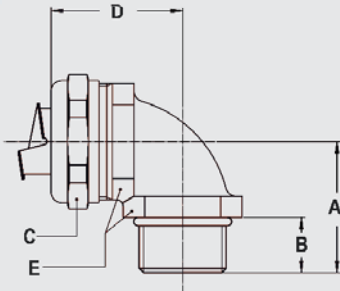
COMPACT FITTINGS FOR SLI, IP 40, STAINLESS STEEL AISI-304



ISO 90° fitting, compact, male, stainless steel AISI-304
(incl. metal clamping ring)



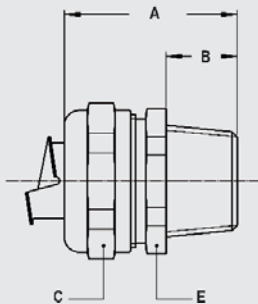
Thread	SLI Size (Inch)	Min. Internal Bore (mm)	Dimensions in mm					Standard Package	Article Number	Weight (Kg/100)
			A	B	C	D	E			
M16 x 1,5	3/8"	11,0	26	10	26	31	22	10	712.916.96	7,2
M20 x 1,5	3/8"	11,0	26	10	26	32	24	10	712.917.96	8,5
M20 x 1,5	1/2"	14,5	28	10	29	34	27	10	712.920.96	9,8
M25 x 1,5	3/4"	19,4	32	10	35	40	33	5	712.925.96	17,2
M32 x 1,5	1"	24,7	40	12	45	49	42	5	712.932.96	29,0
M40 x 1,5	1.1/4"	33,3	46	13	53	53	52	2	712.940.96	42,1



NPT straight compact fitting, male, stainless steel AISI-304
(incl. metal clamping ring)



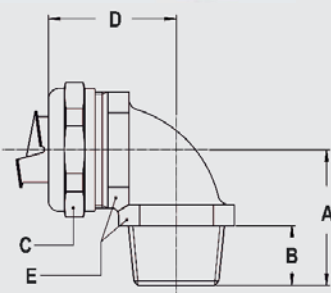
Thread	SLI Size (Inch)	Min. Internal Bore (mm)	Dimensions in mm					Standard Package	Article Number	Weight (Kg/100)
			A	B	C	D	E			
NPT 1/2"	3/8"	11,0	35	14	26	-	24	10	714.012.96	5,0
NPT 1/2"	1/2"	14,5	36	14	29	-	27	10	714.016.96	5,6
NPT 3/4"	3/4"	19,4	37	14	35	-	33	5	714.020.96	8,0
NPT 1"	1"	24,7	40	16	45	-	42	5	714.026.96	13,8
NPT 1.1/4"	1.1/4"	33,3	43	16	53	-	50	2	714.035.96	18,8



NPT 90° fitting, compact, male, stainless steel AISI-304
(incl. metal clamping ring)



Thread	SLI Size (Inch)	Min. Internal Bore (mm)	Dimensions in mm					Standard Package	Article Number	Weight (Kg/100)
			A	B	C	D	E			
NPT 1/2"	3/8"	11,0	30	14	26	32	24	10	714.912.96	8,8
NPT 1/2"	1/2"	14,5	32	14	29	34	27	10	714.916.96	10,2
NPT 3/4"	3/4"	19,4	36	14	35	40	33	5	714.920.96	17,7
NPT 1"	1"	24,7	44	16	45	49	42	5	714.926.96	29,5
NPT 1.1/4"	1.1/4"	33,3	49	16	53	53	52	2	714.935.96	43,4



COMPACT FITTINGS FOR SLI, IP 40, STAINLESS STEEL AISI-316



Anaconda compact fittings, stainless steel AISI-316, for Multiflex SLI-316

These stainless steel AISI-316 Anaconda compact fittings are the same as used in chapter 5 (compact Sealtite). By replacing the standard polyamide clamping ring with a metal clamping ring (see below) they can be used in combination with SLI and SLI-316 conduits. By using the SLI clamping ring, a very high pull-out strength is achieved. The high quality finish of these stainless steel AISI-316 makes them superior to protect against corrosion and gives a nice appearance.

Material & Construction:

Construction: Stainless steel AISI-316 fitting, consisting of 4 parts

(counter nut, clamping ring, ferrule and body).

Material: Counter nut, and body are stainless steel AISI-316. The ferrule is from stainless steel AISI-304. The clamping ring is made of nickel plated brass. O-rings are from NBR (black for ISO metric and blue for Pg).

Temperature: -55 °C till +260 °C continuous.

Protection class: IP 40.

Colour: Metal coloured.

General Index

Anaconda Multiflex



Clamping ring, nickel plated brass, for combination with Multiflex type SLI-316



Thread	SLI-316 Size (Inch)	Min. Internal Bore (mm)	Fitting thread size			Standard Package	Article Number	Weight (Kg/100)
			ISO	Pg	NPT			
-	3/8"	-	M16 x 1,5	Pg 11	1/2" NPT	10	817.213.6	0,6
-	1/2"	-	M20 x 1,5	Pg 16	1/2" NPT	10	817.216.6	0,6
-	3/4"	-	M25 x 1,5	Pg 21	3/4" NPT	5	817.220.6	1,0
-	1"	-	M32 x 1,5	Pg 29	1" NPT	5	817.226.6	1,2
-	1.1/4"	-	M40 x 1,5	Pg 36	1.1/4" NPT	2	817.235.6	2,0

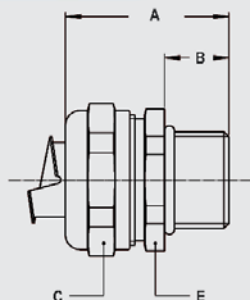
The above mentioned clamping rings for SLI-316 can be used with all types of compact fittings, as outlined in chapter 5.



ISO straight compact fitting, male, stainless steel AISI-316 (incl. metal clamping ring)



Thread	SLI-316 Size (Inch)	Min. Internal Bore (mm)	Dimensions in mm					Standard Package	Article Number	Weight (Kg/100)
			A	B	C	D	E			
M16 x 1,5	3/8"	11,0	31	10	26	-	24	10	712.116.96	4,5
M20 x 1,5	3/8"	11,0	31	10	26	-	24	10	712.117.96	4,6
M20 x 1,5	1/2"	14,5	32	10	29	-	27	10	712.120.96	5,0
M25 x 1,5	3/4"	19,4	33	10	35	-	33	5	712.125.96	7,6
M32 x 1,5	1"	24,7	36	12	45	-	42	5	712.132.96	12,9
M40 x 1,5	1.1/4"	33,3	40	13	53	-	50	2	712.140.96	18,0



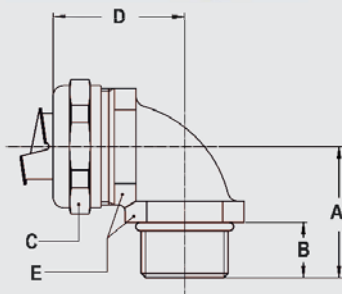
COMPACT FITTINGS FOR SLI, IP 40, STAINLESS STEEL AISI-316



ISO 90° fitting, compact, male, stainless steel AISI-316
(incl. metal clamping ring)



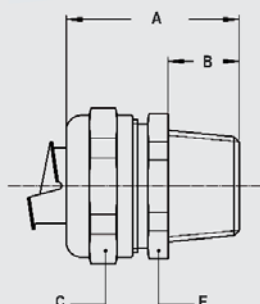
Thread	SLI-316	Min. Internal	Dimensions in mm					Standard	Article	Weight
ISO	Size (Inch)	Bore (mm)	A	B	C	D	E	Package	Number	(Kg/100)
M16 x 1,5	3/8"	11,0	26	10	26	31	22	10	712.516.96	7,2
M20 x 1,5	3/8"	11,0	26	10	26	32	24	10	712.517.96	8,5
M20 x 1,5	1/2"	14,5	28	10	29	34	27	10	712.520.96	9,8
M25 x 1,5	3/4"	19,4	32	10	35	40	33	5	712.525.96	17,2
M32 x 1,5	1"	24,7	40	12	45	49	42	5	712.532.96	29,0
M40 x 1,5	1.1/4"	33,3	46	13	53	53	52	2	712.540.96	42,1



NPT straight compact fitting, male, stainless steel AISI-316
(incl. metal clamping ring).



Thread	SLI-316	Min. Internal	Dimensions in mm					Standard	Article	Weight
NPT	Size (Inch)	Bore (mm)	A	B	C	D	E	Package	Number	(Kg/100)
NPT 1/2"	3/8"	11,0	35	14	26	-	24	10	714.112.96	5,0
NPT 1/2"	1/2"	14,5	36	14	29	-	27	10	714.116.96	5,6
NPT 3/4"	3/4"	19,4	37	14	35	-	33	5	714.120.96	8,0
NPT 1"	1"	24,7	40	16	45	-	42	5	714.126.96	13,8
NPT 1.1/4"	1.1/4"	33,3	43	16	53	-	50	2	714.135.96	18,8



NPT 90° fitting, compact, male, stainless steel AISI-316
(incl. metal clamping ring)



Thread	SLI-316	Min. Internal	Dimensions in mm					Standard	Article	Weight
NPT	Size (Inch)	Bore (mm)	A	B	C	E	E	Package	Number	(Kg/100)
NPT 1/2"	3/8"	11,0	30	14	26	32	24	10	714.512.96	8,8
NPT 1/2"	1/2"	14,5	32	14	29	34	27	10	714.516.96	10,2
NPT 3/4"	3/4"	19,4	36	14	35	40	33	5	714.520.96	17,7
NPT 1"	1"	24,7	44	16	45	49	42	5	714.526.96	29,5
NPT 1.1/4"	1.1/4"	33,3	49	16	53	53	52	2	714.535.96	43,4

