

5312

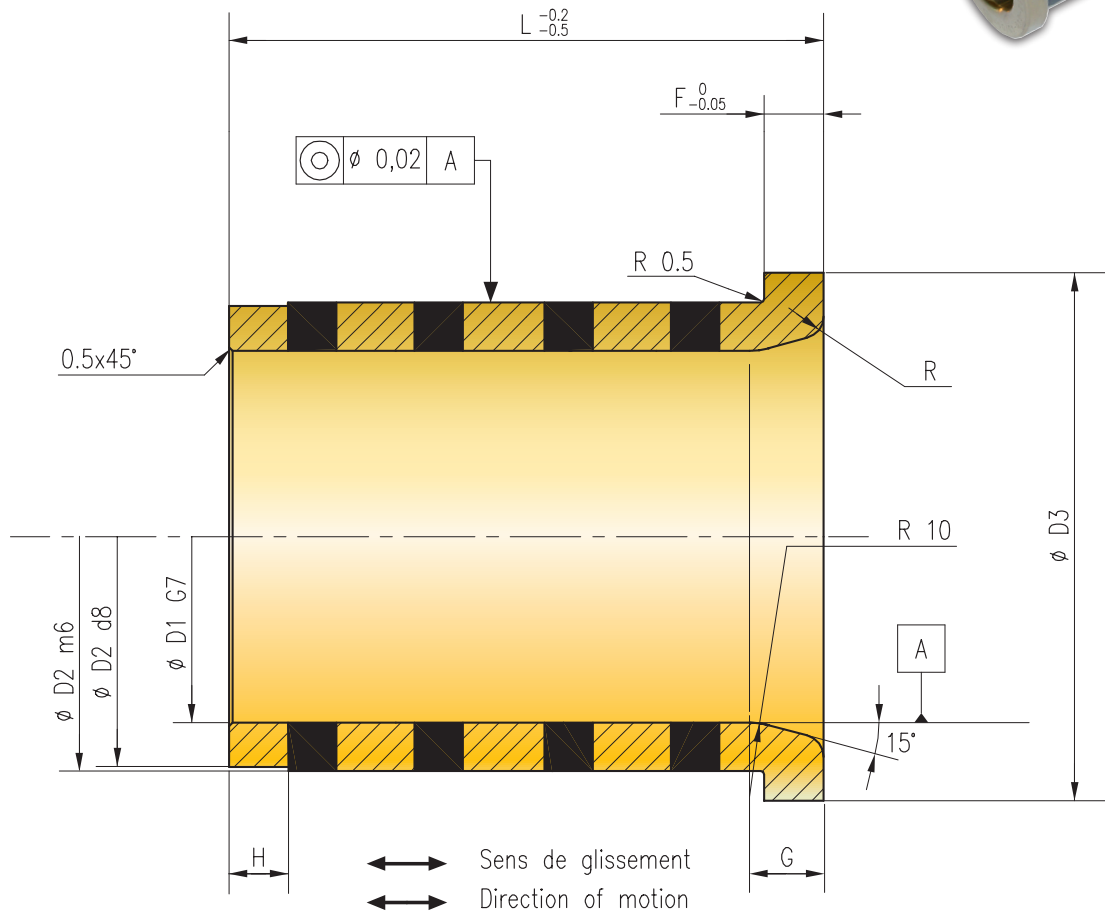
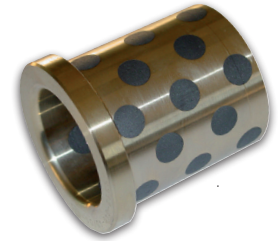
BAGUE LAITON AUTOLUBRIFIEE A EMMANCHER

BRASS BUSH WITH GRAPHITE INSERTS

REF. 5312 D1 =40 L=63 → 5312 -40-63

FABRICATIONS SPÉCIALES SUR DEMANDE
SPECIAL MANUFACTURE ON REQUEST

NF E 63-054



Mat : Laiton ou Cupro-Aluminium HB ≥ 170
R ≥ 600 MPa

Mat : Brass or Copper-Aluminium HB ≥ 170
R ≥ 600 MPa

D2	28	35	44	52	63	80	100	125
D3	32	40	50	60	71	90	112	140
F	4	5	6	8	10	12	16	20
G	--	--	--	--	8	10	10	10
H	3	5	8	8	8	10	10	10
R	2	2	3	3	3	3	4	4
C.MABEC PSA	--	--	--	X345274670	X345281970	X345287270	X345292370	--
C.MABEC RENAULT	--	--	--	M764539401	M764544501	M764549501	M764554601	X345298500
L	32	40	50	63	80	100	125	160
D1	20	25	32	40	50	63	80	100
REF. 5312								