

Dimensions: $\phi 10$



● Body mount method (X)

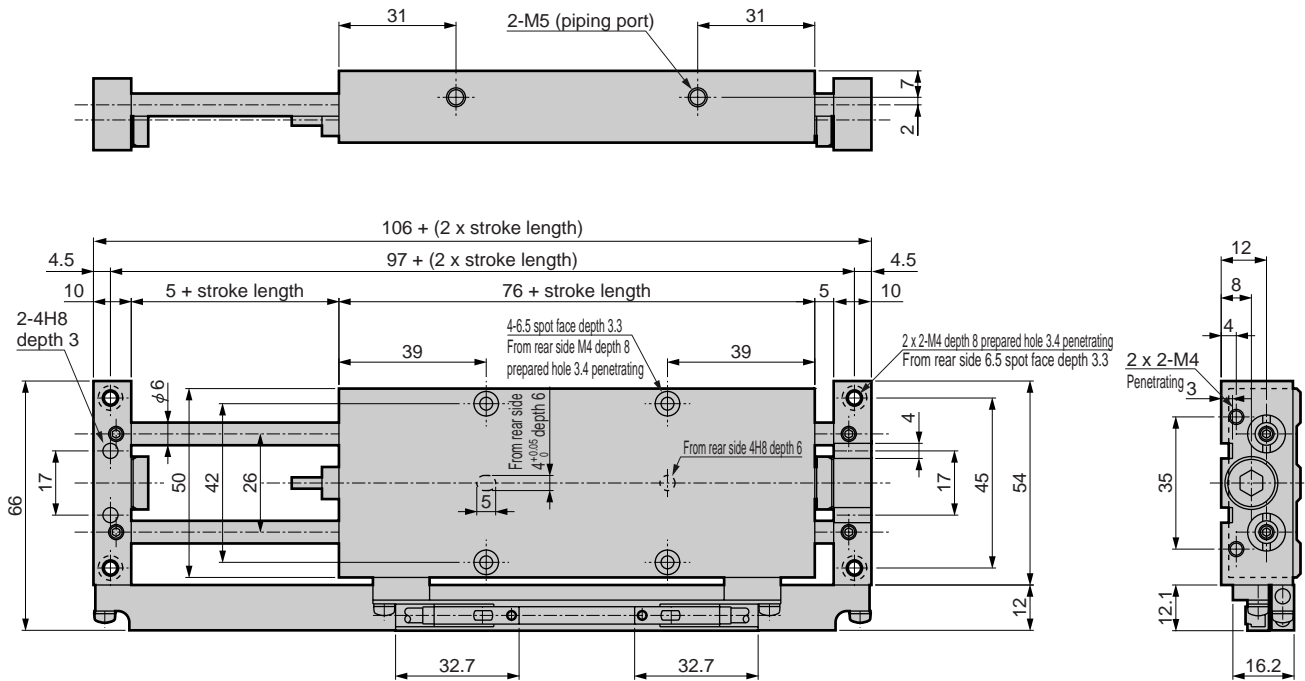
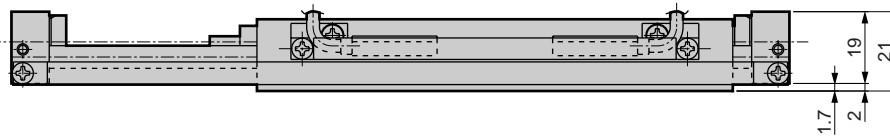


Plate A side

Plate B side



● End plate mount method (Y)

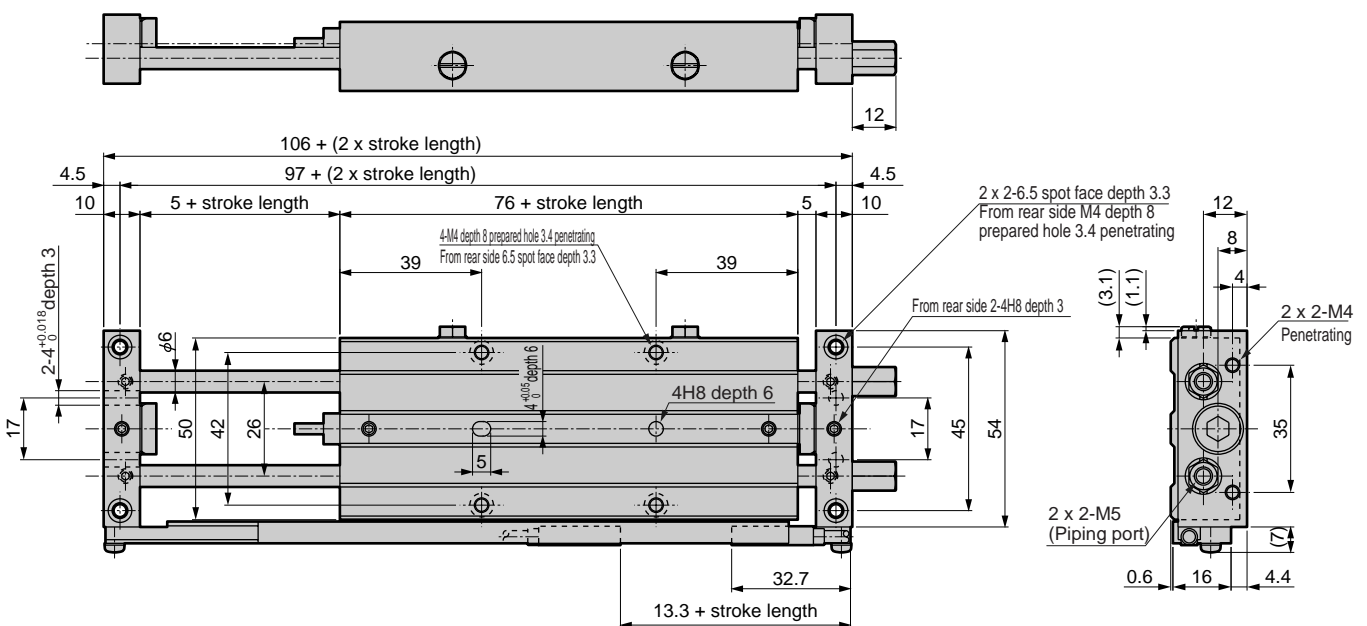
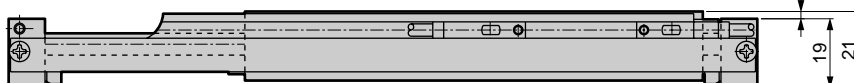


Plate B side

Plate A side



* Faults can occur if the stroke is lengthened by adjusting the stopper. Refer to page 1923 for details.

SCP*2
CMK2
CMA2
SCM
SCG
SCA2
SCS
CKV2
CA/OV2
SSD
CAT
MDC2
MVC
SMD2
MSD*
FC*
STK
ULK*
JSK/M2
JSG
JSC3
USSD
USC
JSB3
LMB
STG
STS/L
LCS
LCG
LCM
LCT
LCY
STR2
UCA2
HCM
HCA
SRL2
SRG
SRM
SRT
MRL2
MRG2
SM-25
CAC3
UCAC
RCC2
MFC
SHC
GLC
Ending

Unit cylinder
Combined functions

UCA2-B Series

Dimensions: $\phi 16$



● Body mount method (X)

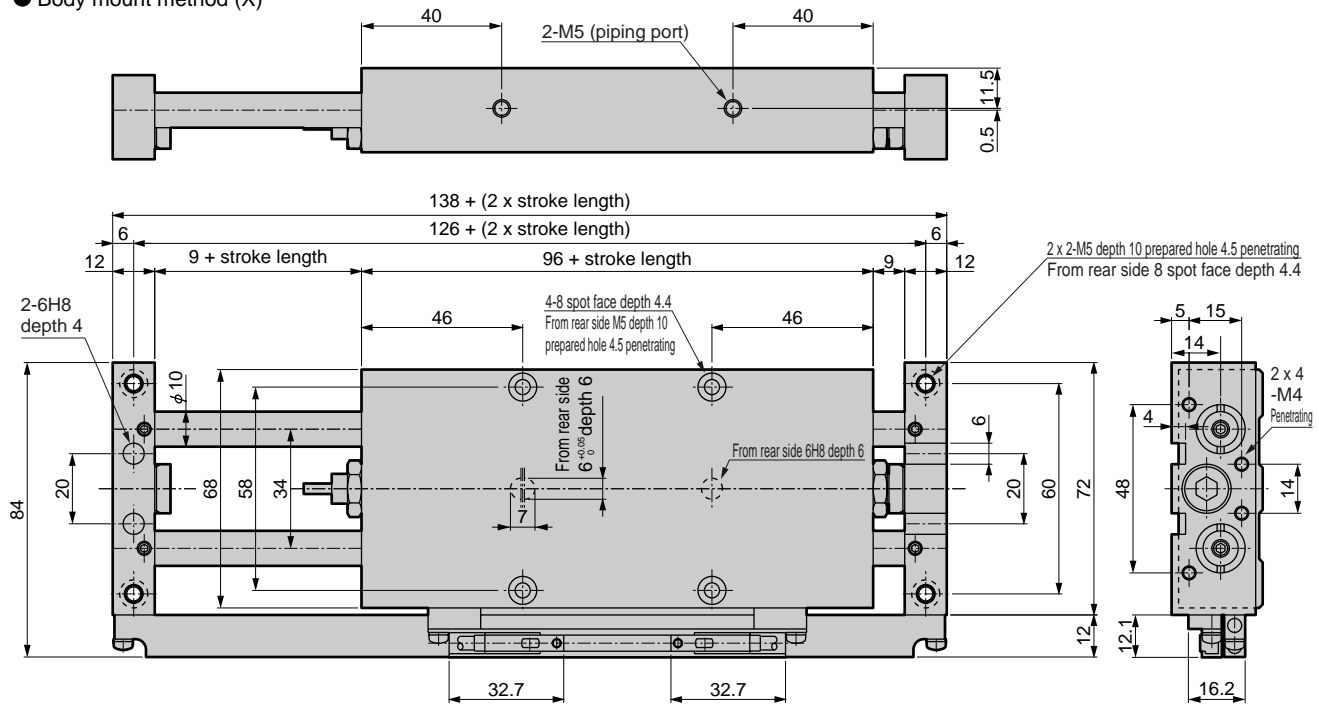
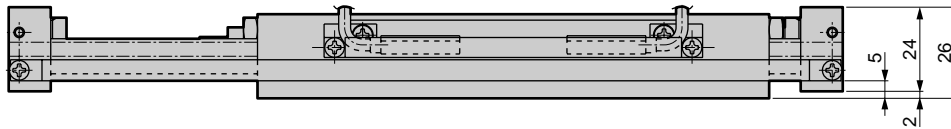


Plate A side

Plate B side



● End plate mount method (Y)

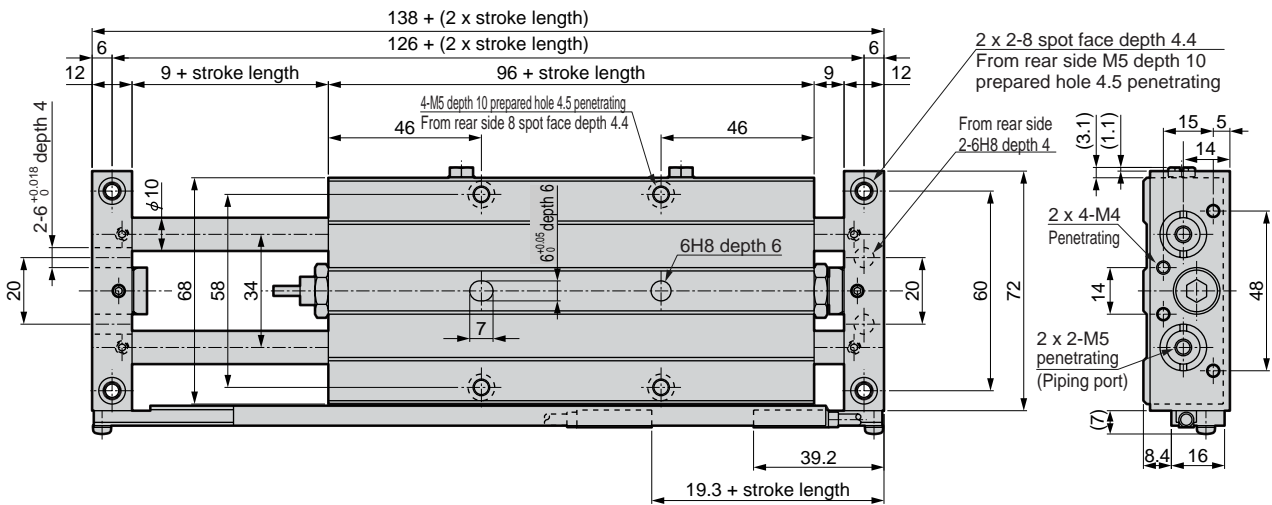
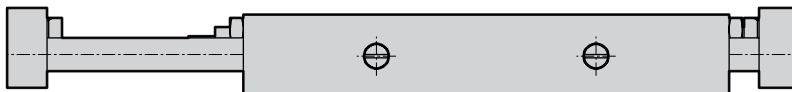
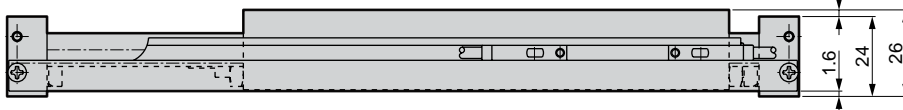


Plate B side

Plate A side



* Faults can occur if the stroke is lengthened by adjusting the stopper. Refer to page 1923 for details.

Dimensions: $\phi 25$



● Body mount method (X)

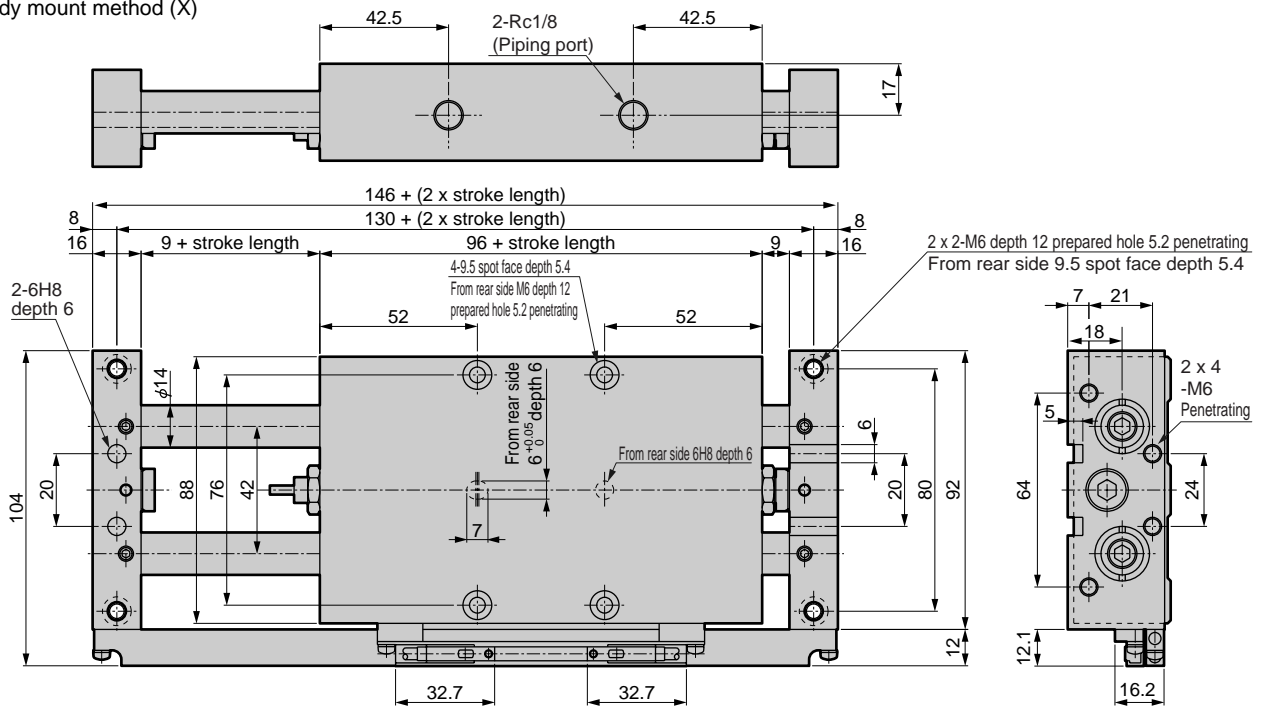
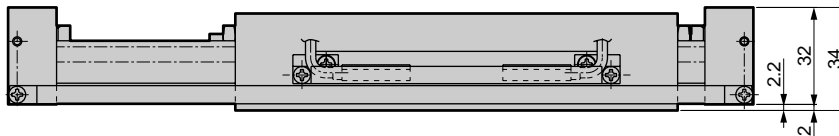


Plate A side

Plate B side



● End plate mount method (Y)

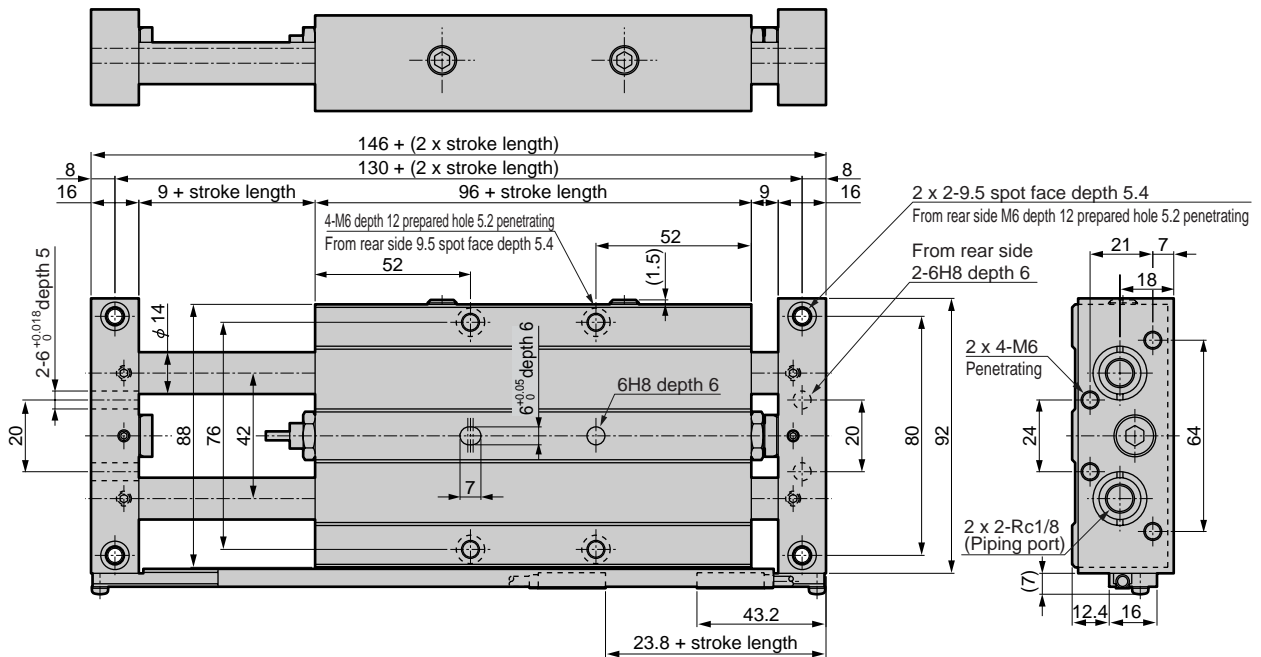
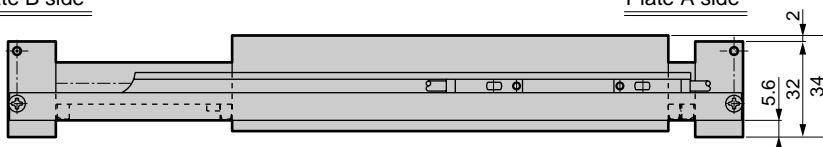


Plate B side

Plate A side



* Faults can occur if the stroke is lengthened by adjusting the stopper. Refer to page 1923 for details.

SCP*2
CMK2
CMA2
SCM
SCG
SCA2
SCS
CKV2
CA/OV2
SSD
CAT
MDC2
MVC
SMD2
MSD*
FC*
STK
ULK*
JSK/M2
JSG
JSC3
USSD
USC
JSB3
LMB
STG
STS/L
LCS
LCG
LCM
LCT
LCY
STR2
UCA2
HCM
HCA
SRL2
SRG
SRM
SRT
MRL2
MRG2
SM-25
CAC3
UCAC
RCC2
MFC
SHC
GLC
Ending

Unit cylinder
Combined functions

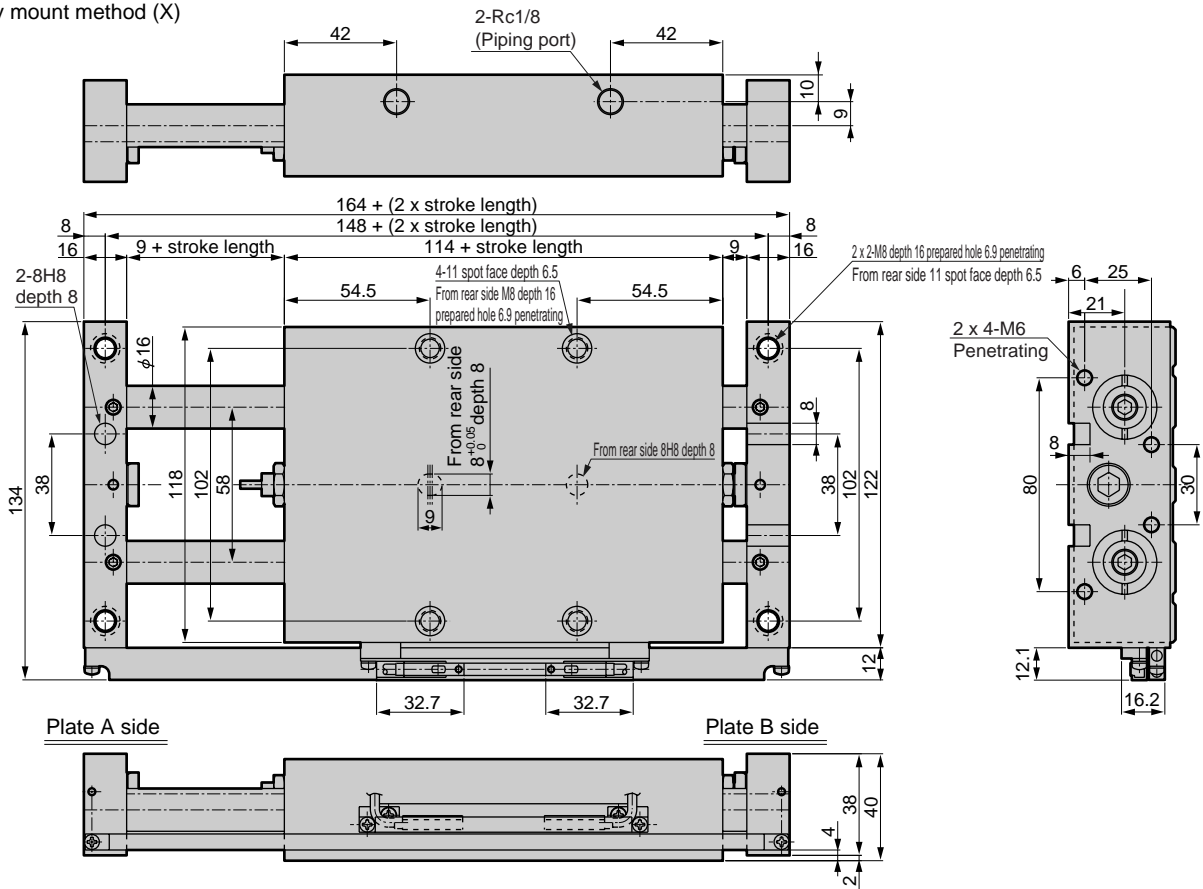
UCA2-B Series



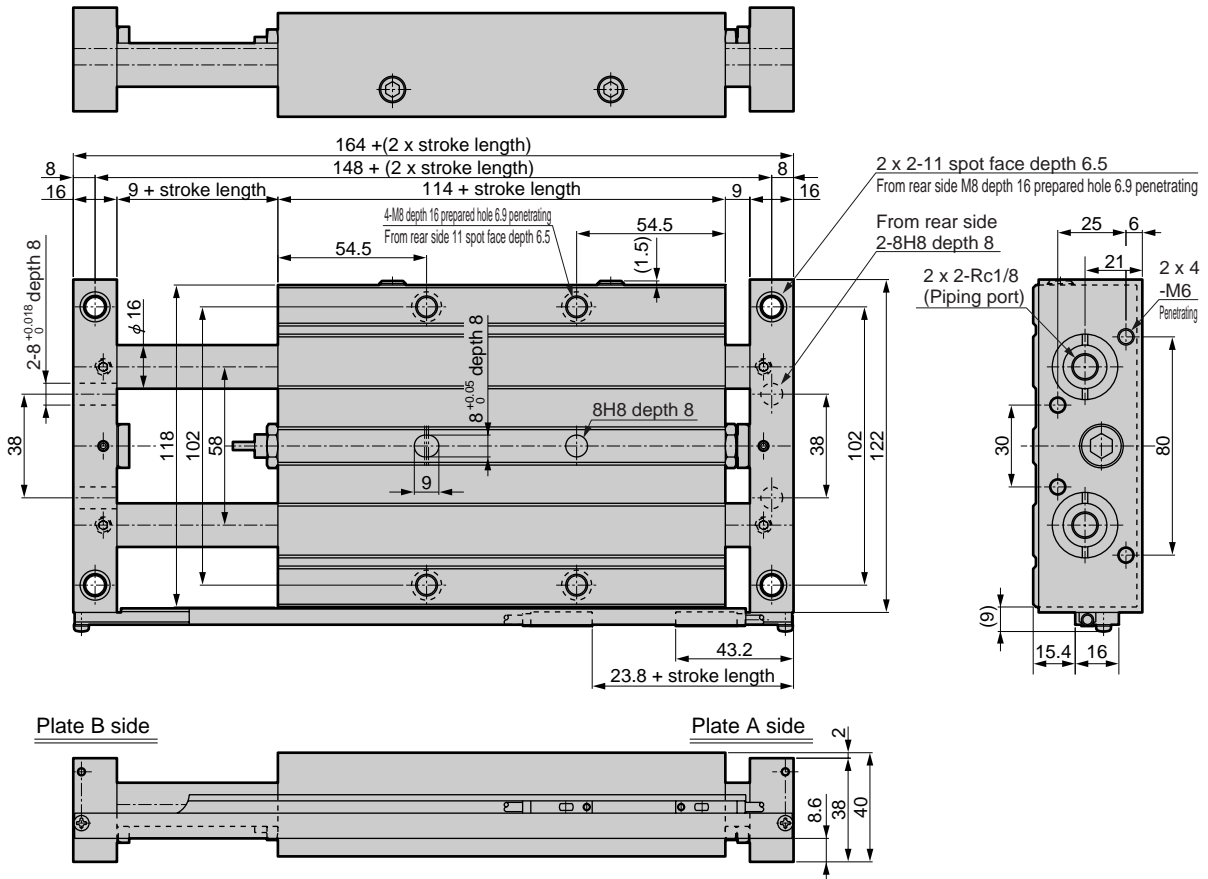
Dimensions: $\phi 32$

- SCP*2
- CMK2
- CMA2
- SCM
- SCG
- SCA2
- SCS
- CKV2
- CA/OV2
- SSD
- CAT
- MDC2
- MVC
- SMD2
- MSD*
- FC*
- STK
- ULK*
- JSK/M2
- JSG
- JSC3
- USSD
- USC
- JSB3
- LMB
- STG
- STS/L
- LCS
- LCG
- LCM
- LCT
- LCY
- STR2
- UCA2**
- HCM
- HCA
- SRL2
- SRG
- SRM
- SRT
- MRL2
- MRG2
- SM-25
- CAC3
- UCAC
- RCC2
- MFC
- SHC
- GLC
- Ending

● Body mount method (X)



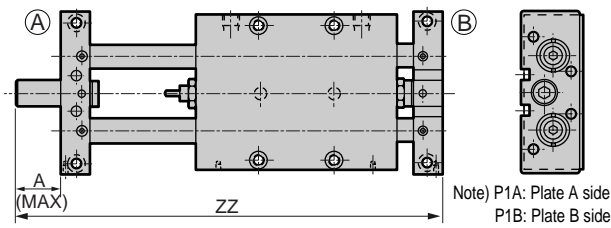
● End plate mount method (Y)



* Faults can occur if the stroke is lengthened by adjusting the stopper.
Refer to page 1923 for details.

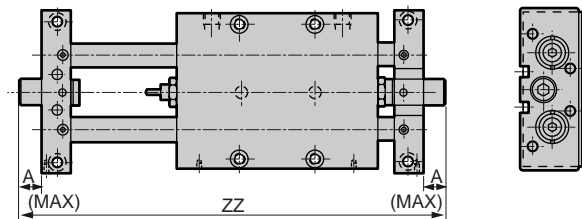
Dimensions: Adjustable stopper

- UCA2-B- $\begin{matrix} 10 \\ X \\ 16 \\ Y \\ 25 \\ 32 \end{matrix}$ *-P1* (single adjustable stopper)



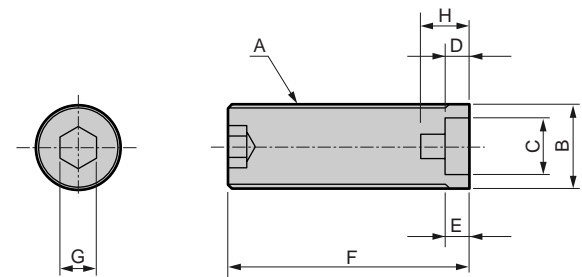
Model no.	A (Max.)	ZZ							
		25st	50st	75st	100st	125st	150st	175st	200st
UCA2-B-10	25	181	231	281	331	-	-	-	-
UCA2-B-16		213	263	313	363	413	463	513	563
UCA2-B-25		221	271	321	371	421	471	521	571
UCA2-B-32		239	289	339	389	439	489	539	589

- UCA2-B- $\begin{matrix} 10 \\ X \\ 16 \\ Y \\ 25 \\ 32 \end{matrix}$ *-P2* (both sides adjustable stopper)



Model no.	A (Max.)	ZZ							
		25st	50st	75st	100st	125st	150st	175st	200st
UCA2-B-10	12.5	181	231	281	331	-	-	-	-
UCA2-B-16		213	263	313	363	413	463	513	563
UCA2-B-25		221	271	321	371	421	471	521	571
UCA2-B-32		239	289	339	389	439	489	539	589

Stopper dimension



Symbol	Bore size (mm)								
Bore size (mm)	A	B	C	D	E	F		G	H
φ10	M14 x 1	φ14	φ10	4	4	Standard	14.5	6	8
						P2	27		
						P1	39.5		
φ16	M14 x 1	φ14	φ9.4	8	4	Standard	17	6	-
						P2	29.5		
						P1	42		
φ25	M14 x 1	φ14	φ9.4	6.5	4	Standard	21	6	-
						P2	33.5		
						P1	46		
φ32	M16 x 1	φ16	φ9.4	5.5	4	Standard	21	8	-
						P2	33.5		
						P1	46		

Discrete adjustable stopper model no.

- Standard type

Part name	Standard stopper	Single adjustable stopper	Both sides adjustable stopper
φ16	UCA2-P-10	UCA2-P1-10	UCA2-P2-10
φ20	UCA2-P-16	UCA2-P1-16	UCA2-P2-16
φ25	UCA2-P-25	UCA2-P1-25	UCA2-P2-25
φ32	UCA2-P-32	UCA2-P1-32	UCA2-P2-32

Stopper adjustment method

- Adjust the stroke by loosening the fixing setscrew and then turning the stopper bolt. Tighten the fixing setscrew after adjustment. Recommended tightening torque of fixing set screw: 1.4N·m
- Refer to the table A to adjust amount of a stopper.
- Using with an extended stroke can cause operation faults. Make sure that the standard stopper does not protrude from the outer side of the end plate. When using the single-side adjustment stopper P1 or double-side adjustment stopper P2, do not protrude the stopper more than the default amount.

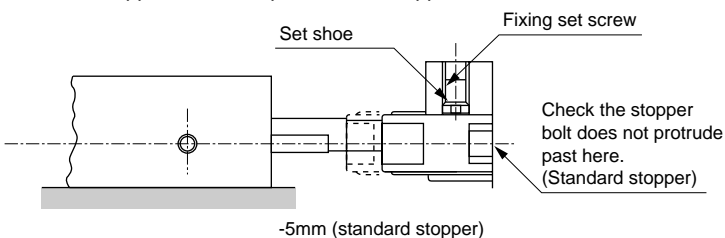
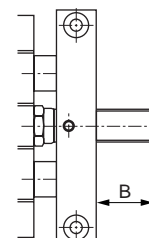


Table A

Descriptions	Adjustable stroke length	Default protrusion amount B
Standard stopper	Both sides each -5mm	0mm
Single adjustable stopper P1A	Plate A side -30mm	P1: 25mm Standard: 0mm
Single adjustable stopper P1B	Plate B side -5mm	
Both sides adjustable stopper P2	Plate B side -30mm Plate A side -5mm	12.5mm



SCP*2
CMK2
CMA2
SCM
SCG
SCA2
SCS
CKV2
CA/OV2
SSD
CAT
MDC2
MVC
SMD2
MSD*
FC*
STK
ULK*
JSK/M2
JSG
JSC3
USSD
USC
JSB3
LMB
STG
STS/L
LCS
LCG
LCM
LCT
LCY
STR2
UCA2
HCM
HCA
SRL2
SRG
SRM
SRT
MRL2
MRG2
SM-25
CAC3
UCAC
RCC2
MFC
SHC
GLC
Ending

Unit cylinder
Combined functions