

AB31/41/42 Series

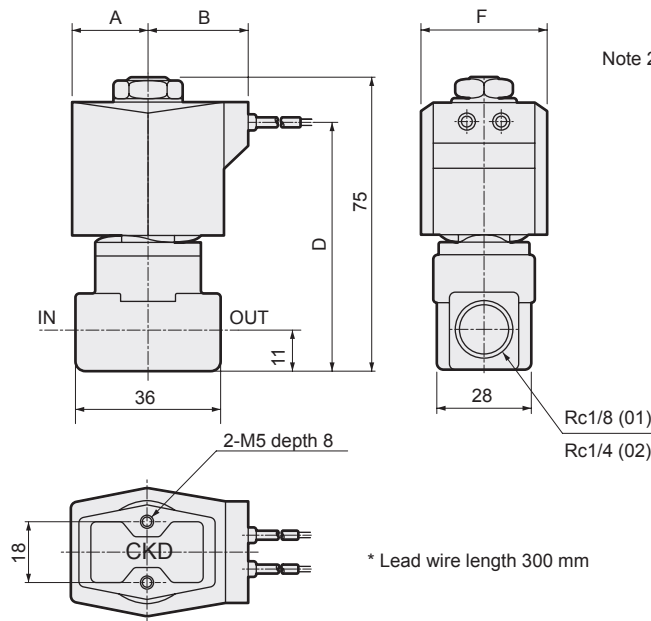


Dimensions: AB31 Series

- Grommet lead wire type
AB31-01/02-1 to 6-* Blank

Note 1: AB31 Series is 2 port solenoid valve and opens when energized. The body and sealant materials are combined according to the working fluid, and the orifice and pressure are selected according to the relation of the required flow rate and pressure. The coil specifications are determined according to the fluid temperature and ambient conditions, allowing the optimum valve to be selected.

Note 2: The dimensions are same for port sizes of G and NPT threads.



* Lead wire length 300 mm

Model no.	A	B	D	F
AB31-01-1 to 6-AC -02-1 to 6-AC	20	27	63	34

EXA

FWD

HNB/G

USB/G

FAB/G

FGB/G

FVB

FWB/G

FHB

FLB

AB

AG

AP/
ADAPK/
ADKFor
dry airExplosion
proofHVB/
HVLS^ΔB/
NABLAD/
NADRelated
components
for waterNP/NAP/
NVP

CHB/G

MXB/G

Others
ValveDust
collectingCVE/
CVSECCH,
CPE/DMedical
analysisGas
combustionAutomatic
wateringCustom order
product

Ending

Optional dimensions: AB31 Series

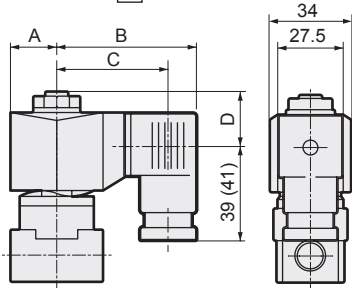


* Refer to the grommet lead wire type dimensions on the left page for common dimensions.

● DIN terminal box

AB31-01/02-1 to 6-*

2	E
	G
	H



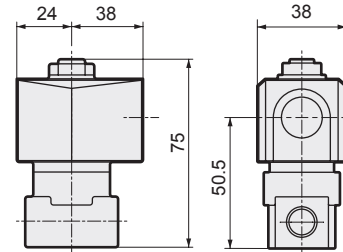
Dimensions shown in () are for G1/2.

Voltage	A	B	C	D
AC (2E/2G/2H)	20	62	50.5 (50)	20.5
DC (2E/2G/2H)	21	63.5	52 (51.5)	20.5

● Open frame lead wire type

AB31-01/02-1 to 6-*

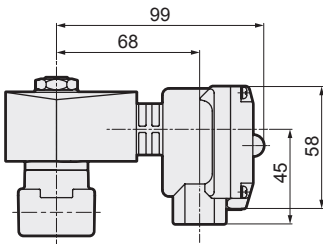
3A
4A
5A



● Open frame type + HP terminal box

AB31-01/02-1 to 6-*

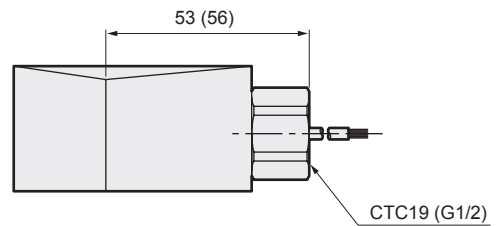
3	M	4M
5	N	4N
	I	
	J	



● Open frame type + conduit

AB31-01/02-1 to 6-*

3A	G
4A	H
5A	

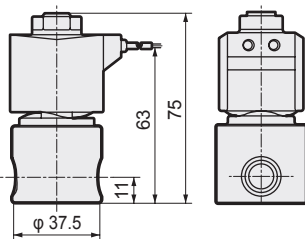


Dimensions shown in () are for G1/2.

● Stainless steel body + grommet lead wire type

AB31-01/02-1 to 6-

D/E/F/R/W/L/M/N

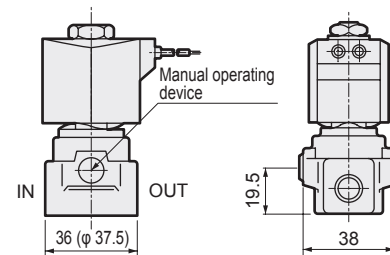


● Manual operating device (locking)

AB31-01/02-1 to 6-***

A

The figure shows brass body.

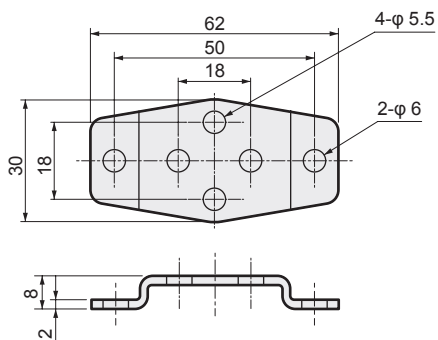


Dimensions shown in () are for stainless steel body.

● Mounting plate

AB31-01/02-1 to 6-***

B



Mounting plate No1 GE-100106

EXA

FWD

HNB/G

USB/G

FAB/G

FGB/G

FVB

FWB/G

FHB

FLB

AB

AG

AP/
AD

APK/
ADK

For
dry air

Explosion
proof

HVB/
HVL

S^ΔB/
NAB

LAD/
NAD

Related
components
for water

NP/NAP/
NVP

CHB/G

MXB/G

Others
Valve

Dust
collecting

CVE/
CVSE

CCH,
CPE/D

Medical
analysis

Gas
combustion

Automatic
watering

Custom order
product

Ending