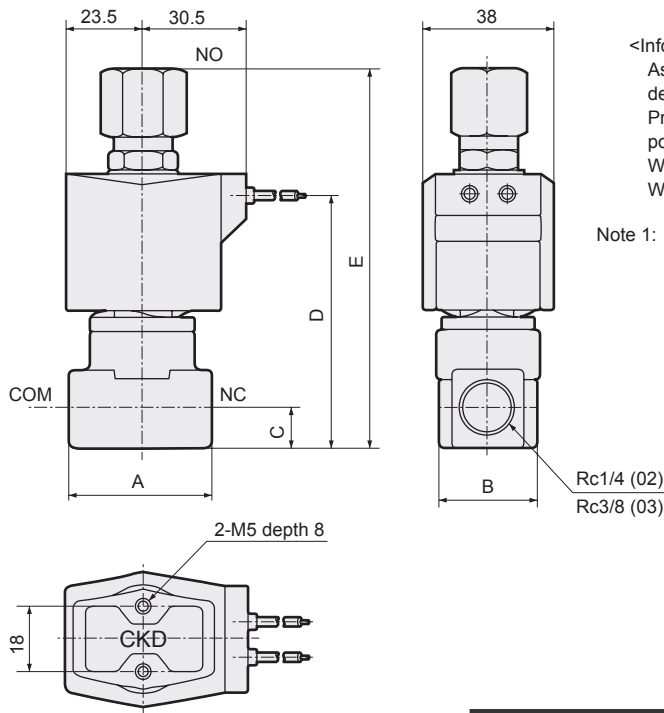


AG34/44 Series

Dimensions: AG44 Series



- Grommet lead wire type
AG44-02/03-1/3/4



<Information>

As the JIS symbol flow shows, this is dedicated for NC port pressurization. Pressurization from other ports is not possible.

When not energized: NO → COM
When energized : COM → NC

Note 1: The dimensions are same for port sizes of G and NPT threads.

* Lead wire length 300 mm

Model no.	A	B	C	D	E
AG44-02-1 to 4	36	28	11	68	99.5
AG44-03-1 to 4	40	28	12	71	106

EXA

FWD

HNB/G

USB/G

FAB/G

FGB/G

FVB

FWB/G

FHB

FLB

AB

AG

AP/
AD

APK/
ADK

For
dry air

Explosion
proof

HVB/
HVL

S^ΔB/
NAB

LAD/
NAD

Related
components
for water

NP/NAP/
NVP

CHB/G

MXB/G

Others
Valve

Dust
collecting

CVE/
CVSE

CCH,
CPE/D

Medical
analysis

Gas
combustion

Automatic
watering

Custom order
product

Ending

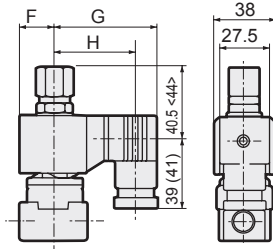
Optional dimensions: AG44 Series

* Refer to the grommet lead wire type dimensions on the left page for common dimensions.

● DIN terminal box

AG44-02/03-1/3/4-*

2E
2G
2H



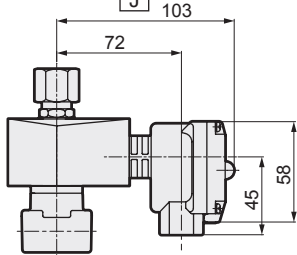
Dimensions shown in <> are for Rc3/8. Dimensions shown in () are for G1/2.

Voltage	F	G	H
AC	23.5	65.5	54 (53.5)
DC	23.5	66	54.5 (54)

● Open frame type + HP terminal box

AG44-02/03-1/3/4-*

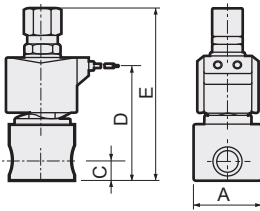
3 M / 4M
5 N / 4N
I
J



● Stainless steel body + grommet lead wire type

AG44-02/03-1 to 4-*

D/E/L/M/R

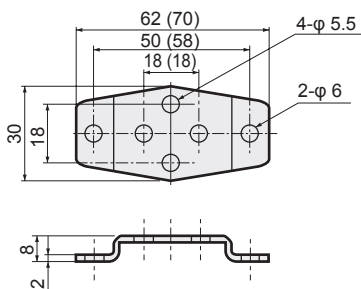


Model no.	A	C	D	E
AG44-02-1 to 4-*	φ 37.5	11	68	99.5
AG44-03-1 to 4-*	φ 45	12	71	106

● Mounting plate

AG44-02/03-1 to 4-***

B

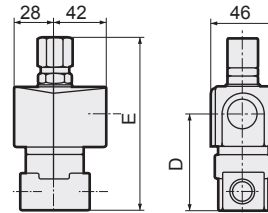


Dimensions shown in () are for mounting plate No. 2.

● Open frame lead wire type

AG44-02/03-1/3/4-*

3A
4A
5A

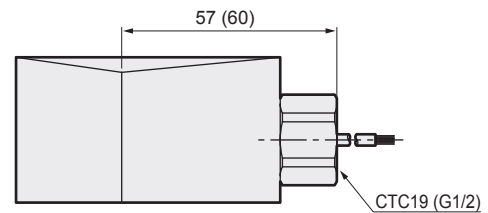


Model no.	D	E
AG44-02-1 to 4-***A	52.0	99.5
AG44-03-1 to 4-***A	55.0	106

● Open frame type + conduit

AG44-02/03-1/3/4-*

3A G
4A H
5A



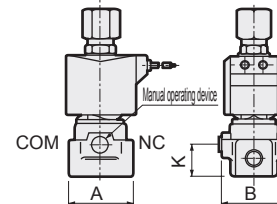
Dimensions shown in () are for G1/2.

● Manual operating device (locking)

AG44-02/03-1 to 4-***

A

The figure shows brass body.



Model no.	A	B	K
AG44-02-1 to 4-***A	36 (φ 37.5)	38	19.5
AG44-03-1 to 4-***A	40 (φ 45.0)	40	22.5

Dimensions shown in () are for stainless steel body.

Code	Applicable model
Mounting plate No.1 GE-100106	● AG44-02/03-1 to 4 Series ● Stainless steel body AG44-02-1 to 4-*** <u>D/E/L/M/R</u>
Mounting plate No.2 GE-100159	● Stainless steel body AG44-03-1 to 4-*** <u>D/E/L/M/R</u>

EXA

FWD

HNB/G

USB/G

FAB/G

FGB/G

FVB

FWB/G

FHB

FLB

AB

AG

AP/
AD

APK/
ADK

For
dry air

Explosion
proof

HVB/
HVL

S^ΔB/
NAB

LAD/
NAD

Related
components
for water

NP/NAP/
NVP

CHB/G

MXB/G

Others
Valve

Dust
collecting

CVE/
CVSE

CCH,
CPE/D

Medical
analysis

Gas
combustion

Automatic
watering

Custom order
product

Ending