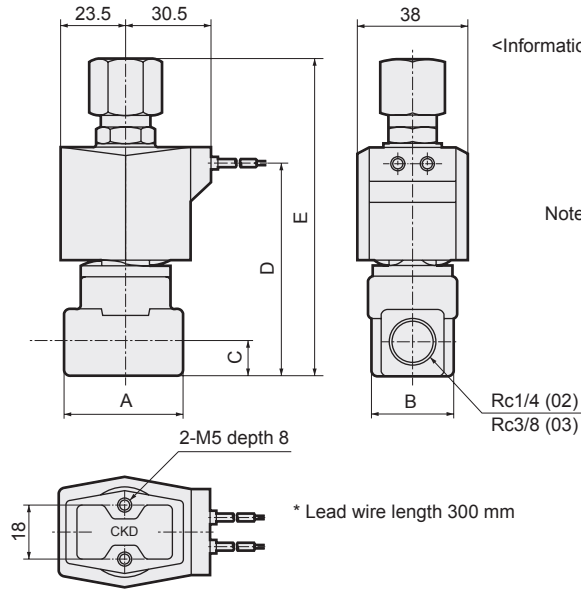


AG31/41 Series



Dimensions: AG41 Series

- Grommet lead wire type
AG41-02/03-1 to 2



<Information> As the JIS symbol flow shows, pressure can be applied from any of the three piping ports. Generally, two orifices (TOP, BODY) have the same values and rated pressure.
When not energized: COM → NO or NO → COM

When energized: COM → NC or NC → COM
Note 1: The dimensions are same for port sizes of G and NPT threads.

| Model no. | A | B | C | D | E |
|----------------|----|----|----|----|------|
| AG41-02-1 to 2 | 36 | 28 | 11 | 68 | 99.5 |
| AG41-03-1 to 2 | 40 | 28 | 12 | 71 | 106 |

EXA

FWD

HNB/G

USB/G

FAB/G

FGB/G

FVB

FWB/G

FHB

FLB

AB

AG

AP/
ADAPK/
ADKFor
dry airExplosion
proofHVB/
HVLS^ΔB/
NABLAD/
NADRelated
components
for waterNP/NAP/
NVP

CHB/G

MXB/G

Others
ValveDust
collectingCVE/
CVSECCH,
CPE/DMedical
analysisGas
combustionAutomatic
wateringCustom order
product

Ending

Optional dimensions: AG41 Series

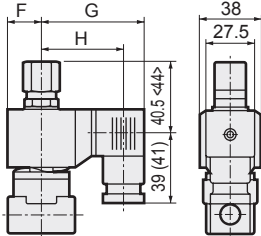


* Refer to the grommet lead wire type dimensions on the left page for common dimensions.

● DIN terminal box

AG41-02/03-1 to 2-*

| |
|----|
| 2E |
| 2G |
| 2H |



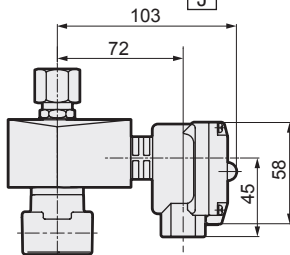
Dimensions shown in <> are for Rc3/8. Dimensions shown in () are for G1/2.

| Voltage | F | G | H |
|---------|------|------|-----------|
| AC | 23.5 | 65.5 | 54 (53.5) |
| DC | 23.5 | 66 | 54.5 (54) |

● Open frame type + HP terminal box

AG41-02/03-1 to 2-*

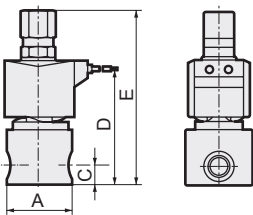
| | | |
|---|---|----|
| 3 | M | 4M |
| 5 | N | 4N |
| | J | |



● Stainless steel body + grommet lead wire type

AG41-02/03-1 to 7-

| | | | | | | | |
|---|---|---|---|---|---|---|---|
| D | E | F | R | W | L | M | N |
|---|---|---|---|---|---|---|---|

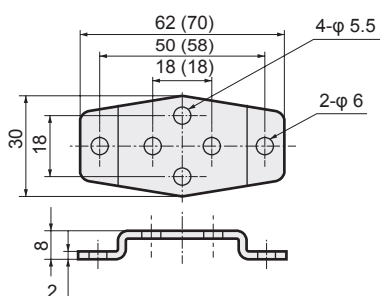


| Model no. | A | C | D | E |
|------------------|--------|----|----|------|
| AG41-02-1 to 2-* | φ 37.5 | 11 | 68 | 99.5 |
| AG41-03-1 to 2-* | φ 45 | 12 | 71 | 106 |

● Mounting plate

AG41-02/03-1 to 2-***

| |
|---|
| B |
|---|

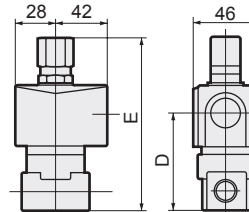


Dimensions shown in () are for mounting plate No. 2.

● Open frame lead wire type

AG41-02/03-1 to 2-*

| |
|----|
| 3A |
| 4A |
| 5A |

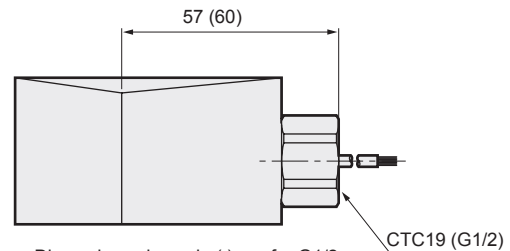


| Model no. | D | E |
|---------------------|----|------|
| AG41-02-1 to 2-***A | 52 | 99.5 |
| AG41-03-1 to 2-***A | 55 | 106 |

● Open frame type + conduit

AG41-02/03-1 to 2-*

| | |
|----|---|
| 3A | G |
| 4A | H |
| 5A | |



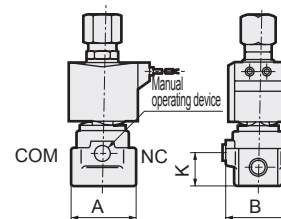
Dimensions shown in () are for G1/2.

● Manual operating device (locking)

AG41-02/03-1 to 2-***

| |
|---|
| A |
|---|

The figure shows brass body.



| Model no. | A | B | K |
|---------------------|-------------|----|------|
| AG41-02-1 to 2-***A | 36 (φ 37.5) | 38 | 19.5 |
| AG41-03-1 to 2-***A | 40 (φ 45.0) | 40 | 22.5 |

Dimensions shown in () are for stainless steel body.

| Code | Applicable model | | | | | | | | |
|----------------------------------|----------------------------------------------------------------------------------------------------------------------------------------------------------------------------------------------------------------------------------------------------|---|---|---|---|---|---|---|---|
| Mounting plate No.1 GE-100106 | ● AG41-02/03-1 to 2 Series ● Stainless steel body AG41-02-1 to 2- <table border="1" style="display: inline-table; vertical-align: middle;"><tr><td>D</td><td>E</td><td>F</td><td>L</td><td>M</td><td>N</td><td>R</td><td>W</td></tr></table> | D | E | F | L | M | N | R | W |
| D | E | F | L | M | N | R | W | | |
| Mounting plate No.2 GE-100159 | ● Stainless steel body AG41-03-1 to 2- <table border="1" style="display: inline-table; vertical-align: middle;"><tr><td>D</td><td>E</td><td>F</td><td>L</td><td>M</td><td>N</td><td>R</td><td>W</td></tr></table> | D | E | F | L | M | N | R | W |
| D | E | F | L | M | N | R | W | | |

EXA

FWD

HNB/G

USB/G

FAB/G

FGB/G

FVB

FWB/G

FHB

FLB

AB

AG

AP/
AD

APK/
ADK

For
dry air

Explosion
proof

HVB/
HVL

S^ΔB/
NAB

LAD/
NAD

Related
components
for water

NP/NAP/
NVP

CHB/G

MXB/G

Others
Valve

Dust
collecting

CVE/
CVSE

CCH,
CPE/D

Medical
analysis

Gas
combustion

Automatic
watering

Custom order
product

Ending