

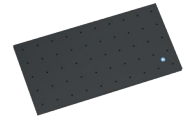
SPANNFIX ECO - CMM Start-Kit M610

Order number 285180

1

SPANNFIX ECO baseplate

Description	Quantity	Order No.
Baseplate M6, hole grid 50 mm, WxDxH 500x250x20 mm	1	395030



2

Clamping claws

Description	Quantity	Order No.
Clamping claws for M8, m10 and M12 threads	3	281440



3

Base rail M10

Description	Quantity	Order No.
Base rail 105 mm with M6 screw for baseplate	3	322010



4

Thread reducer

Description	Quantity	Order No.
M6 male / M8 female for 3D central clamping joint	2	275000
M6 male / M10 female for hex columns	2	275010
SWA8 male / M6 female for 3D central clamping joint	2	246411



5

Hex columns M10, AF 17

Description	Quantity	Order number
25 mm	4	322200
35 mm	4	322300
50 mm	4	322400
100 mm	4	304400



6

Quick-change mount M 10/SWA 8

Description	Quantity	Order No.
Quick-change adapter M 10 for SWA8 modules	2	329500



7

SWA8 centre

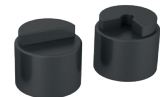
Description	Quantity	Order No.
90° centres with SWA8 quick-change adapter, Ø25 mm	2	303700



8

Flat support SWA8

Description	Quantity	Order No.
Flat support, straight stop, SWA8	1	303810
Flat support, corner stop, SWA8	1	303815



9

Prism support SWA8

Description	Quantity	Order No.
40 mm, SWA8	1	323400
8 mm, SWA8	1	323500



10

Self-aligning pads M10

Description	Quantity	Order No.
To compensate for form inclinations ± 15°	2	323000



SPANNFIX ECO - CMM Start-Kit M610 (continued)

Order number: 285180

11 Screw jacks M10

Description	Quantity	Order No.
With 90° cone point, Ø10	2	322600
With 5 mm tip radius	2	322700



12 Adapter plate for M6 columns

Description	Quantity	Order No.
50 mm, for mounting on M10 columns, pendulum, form and quick-change adapters	4	353700
75 mm, for mounting on M10 columns, pendulum, form and quick-change adapters	4	353800



13 Ø6 column with M6 thread

Description	Quantity	Order No.
75 mm, for spring finger or as stop, with hex socket	6	368300
125 mm, for spring finger or as stop, with hex socket	6	368500



14 Spring finger Ø 6

Description	Quantity	Order No.
50 mm, self-locking and individually adaptable	4	302800
75 mm, self-locking and individually adaptable	4	302900



15 3D central clamping joint

Description	Quantity	Order No.
Action radius 170 mm, threads M8 male under / M6 top	2	240011



16 Accessories

Description	Quantity
M8 x 30 screw for clamping claw	3
M10 x 30 screw for clamping claw	3
M12 x 30 screw for clamping claw	3
U-washer for M8 screw	3
U-washer for M10 screw	3
U-washer for M12 screw	3
AF 13/15 spanner	2
AF 17/19 spanner	2
2.5 mm hex key for SWA8	1
3 mm hex key for round columns	1
5 mm hex key for base rails	1
6 mm hex key for clamping claws	1
8 mm hex key for clamping claws	1
10 mm hex key for clamping claws	1

CMM START-KIT M610

285180

Total- 101 parts