

## Mounting plate brackets, MPA

**Description:** To fix mounting plates in the enclosure, including brackets for depth adjustment in steps of 25 mm. Brackets are needed when an extra mounting plate is required or when the enclosure is ordered without mounting plate (PE).

**Material:** 3 mm zinc plated steel.

**Pack quantity:** 2 top brackets, 2 bottom sliding brackets and 2 adjustment brackets with mounting accessories.

Item no.
MPA06



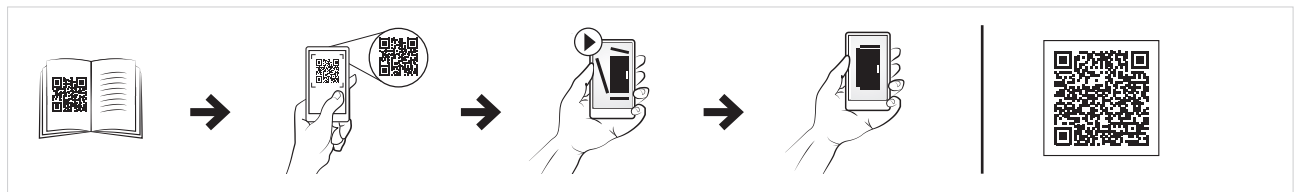
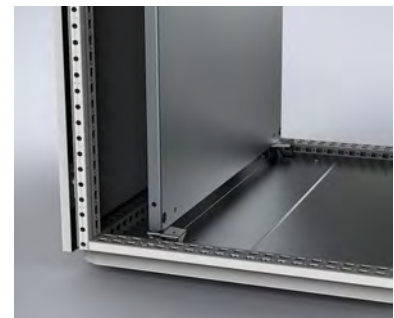
## Mounting plate adjustment brackets, MPD

**Description:** Brackets to adjust the mounting plate in depth by steps of 25 mm in the enclosure frame.

**Material:** 3 mm zinc plated steel.

**Pack quantity:** 2 brackets with mounting accessories.

Item no.
MPD02



## Mounting brackets rear fixing, MPA

**Description:** To fix mounting plates in the enclosure, including brackets for depth adjustment in steps of 25 mm. Brackets are needed when an extra mounting plate is required or when the enclosure is ordered without mounting plate (PE).

**Material:** 3 mm zinc plated steel.

**Pack quantity:** 2 top brackets, 2 bottom sliding brackets and 2 adjustment brackets with mounting accessories.

Item no.
MPA04

