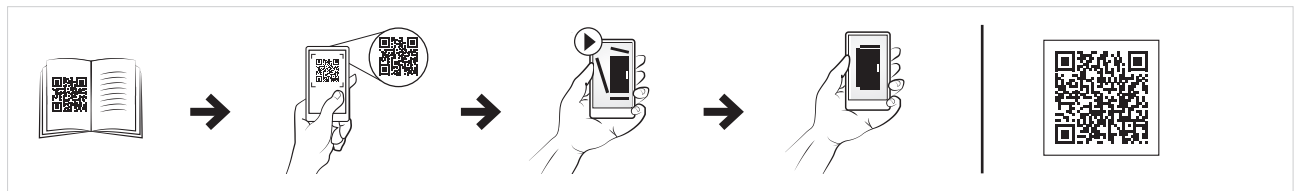


Mounting plate hinge kit, MPH

- Description:** Allows the mounting plate to be opened up to 105°.
- Pack quantity:** 1 complete kit with accessories for one mounting plate.
- Mounting requirement:** Always use in combination with the CB carrier bar.

Item no.
MPH01



Filler plates, MPF

- Description:** Covers the space between pairs of adjacent mounting plates to provide a continuous working surface, when two enclosures are mounted together.
- Material:** 2 mm zinc plated steel.
- Pack quantity:** 1 plate with mounting accessories.

For enclosure		Item no.
H		
1800		MPF1800
2000		MPF2000
2200		MPF2200



For bayed configurations MPD02 must be used along with the fixation brackets supplied with the enclosure and mounting plate. MPA06 must be used if the enclosure comes without fixation brackets. MPF cannot be used with mounting plates if they are installed in the most rear position.

