

Floor Standing Swing Arm System Accessories

Swing arm section profile, SAS

- Description:** The arm section profile is available with an open cable duct or completely closed. In the open profile the plastic cover can be easily pulled out and fitted back into place.
- Material:** Extruded aluminium profile. Plastic cover in the open profile made from EPDM.
- Weight:** Closed profile 3.50 Kg/m. Open profile 3.76 Kg/m.
- Finish:** Anodised aluminium, similar to RAL 9006. Plastic cover in the open profile similar to RAL 7042.
- Delivery:** 1 piece.

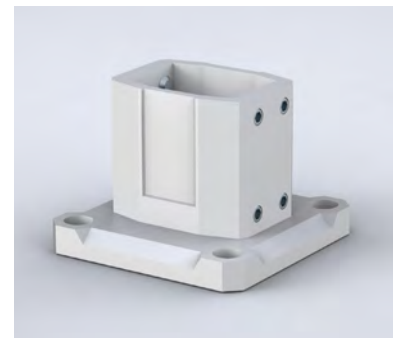
H	W	Length	Item no. Closed Profile	Item no. Open Profile
60	45	250	SAS025CSL	SAS025OSL
60	45	500	SAS050CSL	SAS050OSL
60	45	1000	SAS100CSL	SAS100OSL
60	45	2000	SAS200CSL	SAS200OSL



Base or wall flange SL, SABW

- Description:** Base or wall flange component for SL system.
- Material:** Aluminium.
- Finish:** RAL 7035.
- Delivery:** 1 piece, sealing gaskets, and mounting accessories.

Item no.
SABW1SL



Rotary base or wall flange SL, SABT

- Description:** Rotary base or wall flange for SL system, angle of rotation 300° with stop. Rotation angle limiter is to be ordered as a separate product.
- Material:** Aluminium.
- Finish:** RAL 7035.
- Delivery:** 1 piece, sealing gaskets, and mounting accessories.

Item no.
SABT1SL

