

# Floor Standing Enclosures

## Accessories | Busbar

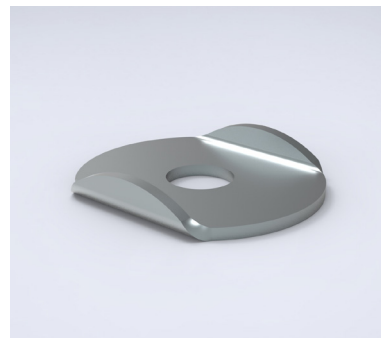
### Rear busbar support fixation, MSBF

**Description:** Saddle to fix the bars to the rear busbar support, with its special design helps us to fix properly the bars to the support. The bolts, washers and nuts must be ordered separately.

**Material:** 2 mm zinc plated steel.

**Delivery:** 20 pieces.

Item no.
MSBF20



### Saddle for busbar connection, MSBC

**Description:** Saddle to make the bars connection, with its special design helps us to make the bars connection properly, making it easier. The bolts, washers and nuts must be operated separately.

**Material:** 2 mm zinc plated steel.

**Delivery:** 20 pieces.

Item no.
MSBC20



### Holder for busbar connection, MSBH

**Description:** Cooper holder for busbar connection, which guarantee a perfect connection between main busbar and secondary busbar.

**Material:** 2 mm cooper.

**Delivery:** 20 pieces.

Item no.
MSBH20

