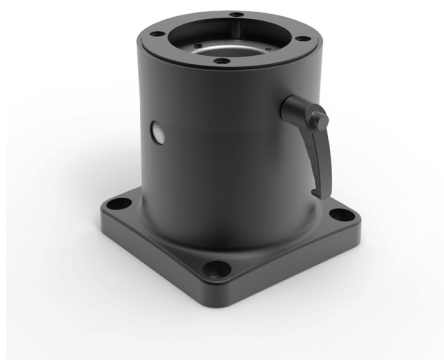


# S2MBC

Base coupling



**Additional information:** Base Coupling attaches the enclosure directly to a horizontal surface. The enclosure can be rotated 300 degrees and locked in position. Includes safety stop and maintenance-free bearing. RAL 9005 black finish. Die-cast aluminum construction. Includes installation instructions, gaskets and enclosure mounting hardware. Surface mounting hardware is not provided.

**Note:** The maximum weight a medium swing arm can support depends on the length of the arm and the system structure. See diagram in the mounting instructions.

---

**Item no.**

S2MBC

---