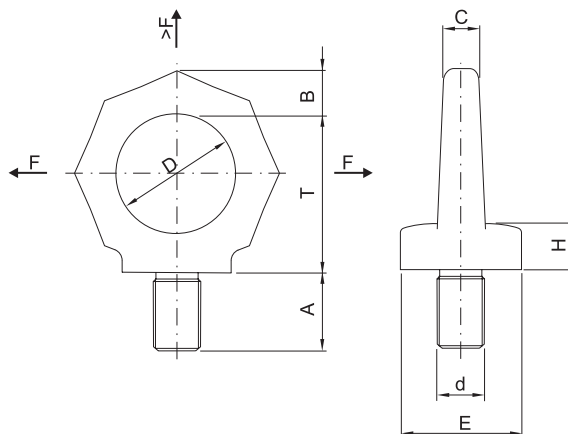


Śruba z uchem ośmiokątnym

Eye bolt

RS



Uwaga:

F – obciążenie dopuszczalne dla każdego punktu zaczepienia.

Note:

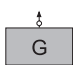

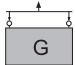
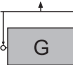
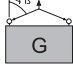
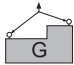

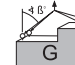
F – working load limit carrying capacity of each lifting point.

NR KAT. Order No.	Typ Type	F [t]	A	B	C	D	E	H	d	T	waga weight [kg]
61401	RS-M6	0,1	12	11	10	25	25	11	M6	34	0,1
61402	RS-M8	0,2	12	11	10	25	25	11	M8	34	0,1
56397	RS-M10	0,25	15	11	10	25	25	11	M10	34	0,1
56398	RS-M12	0,4	18	13	12	30	30	12	M12	41	0,2
56403	RS-M14	0,75	21	15	14	35	35	13	M14	48	0,25
56404	RS-M16	1	24	15	14	35	35	13	M16	48	0,3
56407	RS-M20	1,5	30	17	16	40	40	16	M20	55	0,45
56408	RS-M24	2	36	21	20	50	50	20	M24	70	0,7
56409	RS-M30	3	45	26	24	60	60	25	M30	85	1,6
56954	RS-M36	4	54	43	38	90	100	37	M36	130	6,0
56955	RS-M42	6	63	43	38	90	100	37	M42	130	6,2
56956	RS-M48	8	67	43	38	90	100	37	M48	130	6,4

Śruba z uchem ośmiokątnym

Eye bolt

RS

Sposób zawieszania Method of lift										
Ilość punktów zawieszania Number of legs	1	1	2	2	2	2	2	3 - 4	3 - 4	3 - 4
Kąt pochyleńia β Angle of inclination <math>< \beta</math>	0°	90°	0°	90°	0°- 45°	45°- 60°	niesymetr. unsymmetr.	0°- 45°	45°- 60°	niesymetr. unsymmetr.
NR KAT. Order No.	Typ Type	Max. waga „G” [t] dla wszystkich punktów zaczepienia w zależności od sposobu zawieszania Max. weight of load "G" [t] for all power point types with different sling methods								
61401	RS-M6	0,4	0,1	0,8	<p>W tym zakresie zaleca się stosowanie elementów transportowych typu VRS z możliwością regulacji kierunku obciążania.</p> <p><i>In this range we recommend use the VRS type that is adjustable in the direction of pull!</i></p>					
61402	RS-M8	0,8	0,2	1,6						
56397	RS-M10	1	0,25	2						
56398	RS-M12	1,6	0,4	3,2						
56403	RS-M14	3	0,75	6						
56404	RS-M16	4	1	8						
56407	RS-M20	6	1,5	12						
56408	RS-M24	8	2	16						
56409	RS-M30	12	3	24						
56954	RS-M36	16	4	32						
56955	RS-M42	24	6	48						
56956	RS-M48	32	8	64						