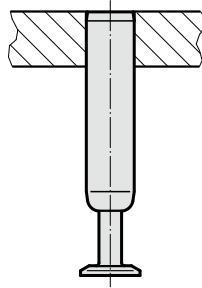


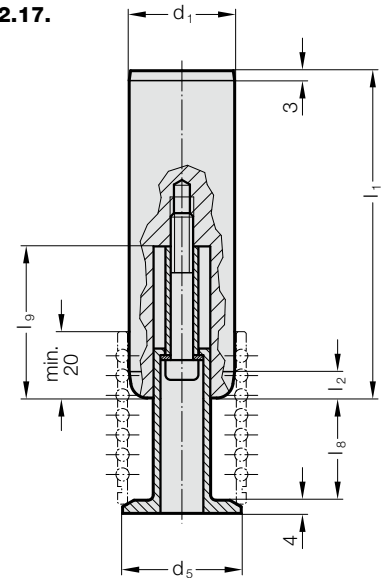
# GUIDE PILLAR WITH BALL CAGE RETAINER



Mounting example



202.17.



**Material:**

Steel, (Core strength:  $\geq 900 \text{ N/mm}^2$ ) surface hardened  
 Surface hardness: 60 + 3 HRC, Hardness penetration  $\geq 1,8 \text{ mm}$

**Execution:**

fine-ground and superfinished

**Note:**

- ☞ Preloading see pairing classification at the beginning of chapter D
- ☞ Matching guide combinations, see selection matrix at the beginning of chapter D.

☞ Assembly guide lines / Dimensional requirements and tolerances at the end of chapter D.

Dimensions of ball cage retainer see 202.91.

Tolerance range:

- yellow = .10
- green = .20
- red = .30

**202.17. Guide pillar with ball cage retainer**

d <sub>1</sub>	38	40	48	50	60	63
d <sub>5</sub>	42	44	52	54	64	67
l <sub>2</sub>	6	6	8	8	8	8
KG (l <sub>8</sub> / l <sub>9</sub> )						
1 (31/46)	●	●	●	●	●	●
2 (41/56)	●	●	●	●	●	●
3 (51/66)	●	●	●	●	●	●
4 (61/76)	●	●	●	●	●	●
5 (73/89)	●	●	●	●	●	●
l <sub>1</sub>						
160	●	●				
180	●	●	●			
200	●	●	●	●		
224	●	●	●	●		
250	●	●	●	●	●	
280	●	●	●	●	●	●
315	●	●	●	●	●	●
355	●	●	●	●	●	●
400	●	●	●	●	●	●
450	●	●	●	●	●	●
500	●	●	●	●	●	●
550	●	●	●	●	●	●
600	●	●	●	●	●	●
700	●	●	●	●	●	●
800	●	●	●	●	●	●

**Ordering Code (example):**

Guide pillar with ball cage retainer		= 202.17.
Diameter of conduit d <sub>1</sub>	48 mm	= 048.
Length l <sub>1</sub>	550 mm	= 550.
Cage unit size KG	1	= 1.
Classification TOL	yellow	= 10
Order No		= 202.17. 048. 550. 1. 10