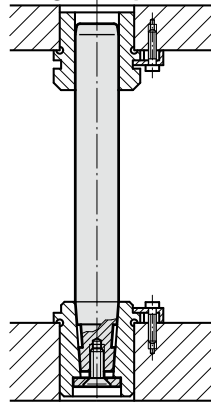


# RETAINING DISC WITH COUNTERSUNK HEAD CAP SCREW, DIN 9825/ISO 9182-4

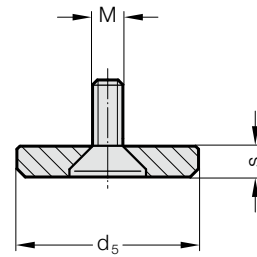
## RETAINING DISC WITH SOCKET CAP SCREW, ~AFNOR



Mounting example



2021.53.



**Material:**

Retaining disc: Steel, burnished  
Countersunk head cap screw DIN 7991/ISO 10642

**Note:**

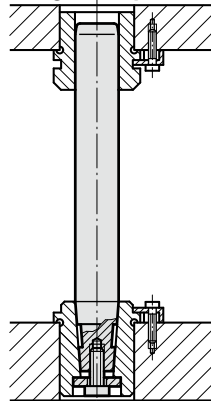
Has to be ordered separately to guide pillar, conical according to DIN 9825 / ISO 9182-4 2021.50. or 2021.58.

**2021.53. Retaining disc with countersunk head cap screw, DIN 9825/ISO 9182-4**

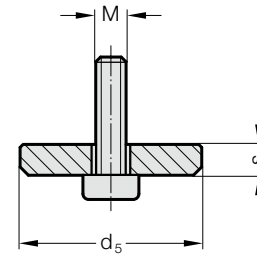
Order No	Nominal-ø	Pillar-ø	d <sub>5</sub>	s	M
2021.53.020	20	19/20	22	3	M6
2021.53.025	25	24/25	25	3	M8
2021.53.032	32	30/32	32	3	M8
2021.53.040	40	38/40	40	5	M8
2021.53.050	50	48/50	50	5	M10
2021.53.063	63	60/63	63	6	M12



Mounting example



202.53.



**Material:**

Retaining disc: Steel, burnished  
Socket head cap screw DIN 6912

**Note:**

Has to be ordered separately to guide pillar, conical according to AFNOR 2021.50. or 2021.58.

**202.53. Retaining disc with socket cap screw, ~AFNOR**

Order No	Pillar-ø	d <sub>5</sub>	s	M
202.53.016	16	18	3	M6
202.53.020	20	22	3	M6
202.53.025	25	25	4	M8
202.53.032	32	32	4	M8
202.53.040	40	40	4	M8
202.53.050	50	50	5	M10
202.53.063	63	63	6	M12