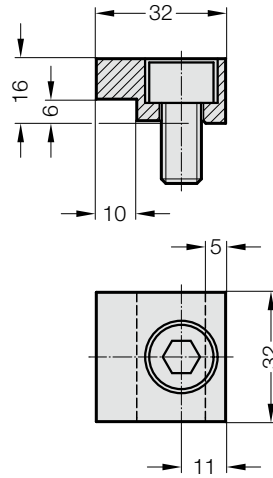


**SCREW CLAMP WITH SCREW**  
**SCREW CLAMP WITH SCREW, GM STANDARD**  
**SCREW CLAMP WITH SCREW, NAAMS**



2072.46



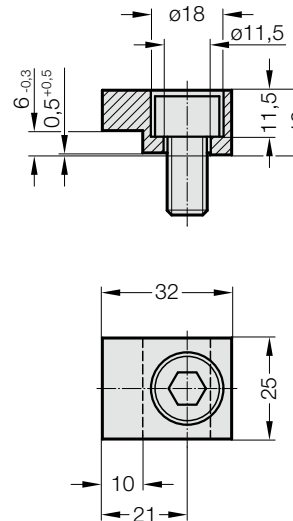
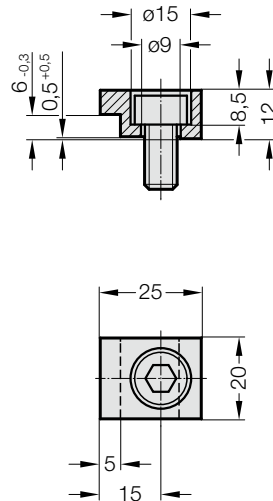
**Screw clamp**

- incl. screw
- steel, milled
- clamping height 6 - 6,3 mm
- M10 screw



2072.46.30.12

2072.46.30.16

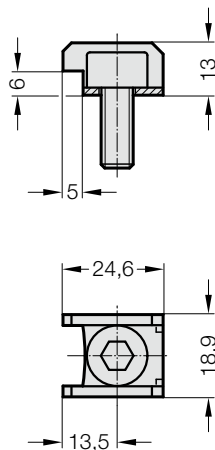


**Screw clamp**

- according to GM, incl. screw
- 2072.46.30.12
- steel, milled
- clamping height 6 mm
- M8 screw
- 2072.46.30.16
- steel, milled
- clamping height 6 mm
- M10 screw



2072.47



**Screw clamp**

- according to NAAMS, incl. screw
- steel punched bent component
- clamping height 6 - 6,3 mm
- M8 screw