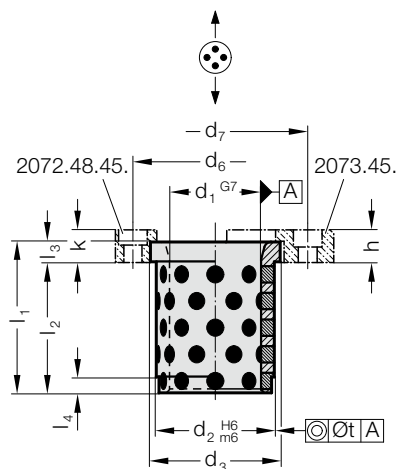


# GUIDE BUSH WITH COLLAR, BRONZE WITH SOLID LUBRICANT, CNOMO

2102.70.



## Material:

Bronze with solid lubricant, oilless lubricating

## Note:

☞ Matching guide combinations, see selection matrix at the beginning of chapter D.

☞ Assembly guide lines / Dimensional requirements and tolerances at the end of chapter D.

## Fixing:

(to be ordered separately)

Screw clamps with screws 2072.48.45. or  
Securing flange 2073.45.

## Attention:

Bushes can only be used with axial motion!

Note that press fitment reduces inside bush diameter.

## 2102.70. Guide bush with collar, Bronze with solid lubricant, CNOMO

d <sub>1</sub>	20	25	32	40	50	63	80	100
d <sub>2</sub>	28	35	44	52	63	80	100	125
d <sub>3</sub>	32	40	50	60	71	90	112	140
d <sub>6</sub>	-	-	-	75	90	111	133	162
d <sub>7</sub>	48	56	65	82	98	115	144	170
l <sub>1</sub>	32	40	50	63	80	100	125	160
l <sub>2</sub>	28	35	44	55	70	88	109	140
l <sub>3</sub>	4	5	6	8	10	12	16	20
l <sub>4</sub>	3	5	8	8	8	10	10	10
h	10	10	12	12	16	20	25	32
k	-	-	-	12	16	20	25	32
t	0.01	0.01	0.01	0.02	0.02	0.02	0.02	0.02

## Ordering Code (example):

Guide bush with collar, Bronze with solid lubricant, CNOMO = 2102.70.

Diameter of conduit d<sub>1</sub> 50 mm = 050

Order No = 2102.70. 050