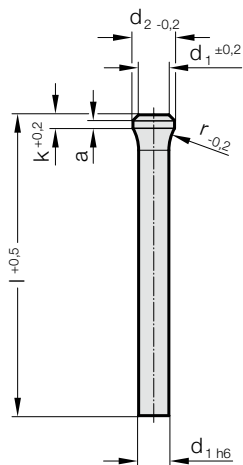


PUNCH WITH TAPERED HEAD, BLANK, DIN 5118 SHAPE A

2206.

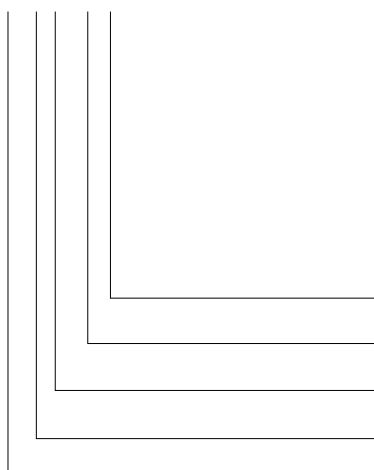


2206. Punch with tapered head, blank, DIN 5118 Shape A

d ₁ / Order No	d ₂	a	k	r	l (Order Code character)	71 (D)	80 (E)	90 (F)	100 (G)	120 (J)	150 (M)	200 (N)
3/(1)	4.5	1	3	6.5		●	●	●	●	●		
4/(2)	5.5	1.5	4	8		●	●	●	●	●		
5/(3)	7	1.5	4	10		●	●	●	●	●		
6/(4)	9	1.5	4	10		●	●	●	●	●		
8/(5)	11	1.5	4	12		●	●	●	●	●		
10/(6)	14	1.5	4	15		●	●	●	●	●	●	
13/(7)	17	1.5	4	15		●	●	●	●	●	●	●
16/(8)	20	1.5	4	15		●	●	●	●	●	●	●
20/(9)	25	1.5	4	15		●	●	●	●	●	●	●

Ordering Code (example):

2206.7G



Length: l
100 mm
Diameter: d₁
13 mm
Type:
with tapered head
Execution:
blank
Punch:
without ejector pin

Order Code character
= (G)
Order No
= (7)
Order No
= (6)
Order No
= (0)
= 22

Material:

HSS
Hardness:
Shaft 62-66 HRC
Head 45-55 HRC

Description of FIBRO materials for tool and die components see at the beginning of Chapter E.

Execution:

Shaft precision ground. Head subsequently hot upset-forged and tempered.

Note:

Matching piloted counterbore 2284.00.
Matching retainer ring 2284.00.01.