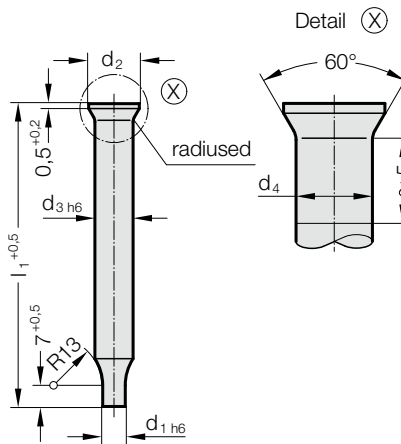


# PUNCH DIN 9861 SHAPE CA



224.



## Material:

HSS

Order No 224.3.

Hardness:

Shaft  $64 \pm 2$  HRC

Head  $52 \pm 3$  HRC

HZ - TIN (HSS)

Order No 224.0.

Hardnes:

Surface 2300 HV 0,05

Head  $52 \pm 3$  HRC

Description of FIBRO materials for tool and die components see at the beginning of Chapter E.

## Execution:

Shaft precision ground. Head subsequently hot upset-forged and tempered; residual upset-buge below head normally much smaller than permissible acc. to DIN 9861.

Stock lengths: 71 mm.

Other lengths and diameters on request!

## 224. Punch DIN 9861 Shape CA

	Gradation					
$d_1$	$d_1$	$d_2$	$d_3$	$d_4$	$l_1$	
0,1 - 1,5	0.05	3	2	2.03	71	
1,55 - 2,95	0.05	4.5	3	3.03	71	

## Ordering Code (example):

Punch DIN 9861 Shape CA	=	224.
Material MAT	HSS	= 3.
Cutting diameter $d_1$	1.55 mm	= 0155.
Length $l_1$	71 mm	= 071
Order No		= 224.3. 0155. 071