

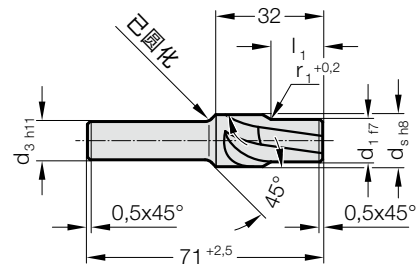
## 用于带喇叭颈冲头的引导扩孔

### 2284.00. 用于带喇叭颈冲头的引导扩孔

d <sub>1</sub>	d <sub>s</sub>	d <sub>3</sub>	r <sub>1</sub>	l <sub>1</sub>
2	3.3	3.3	3.5	5
2.1	3.5	3.5	5	5
2.2	3.5	3.5	5	5
2.3	3.8	3.8	5	5
2.4	3.8	3.8	5	5
2.5	3.8	3.8	5	5
2.6	4.3	4.3	6.5	7
2.7	4.3	4.3	6.5	7
2.8	4.3	4.3	6.5	7
2.9	4.3	4.3	6.5	7
3	4.9	4.9	6.5	7
3.1	4.9	4.9	6.5	7
3.2	4.9	4.9	6.5	7
3.3	4.9	4.9	6.5	7
3.4	4.9	4.9	6.5	7
3.5	5.4	5.4	8	8
3.6	5.4	5.4	8	8
3.7	5.4	5.4	8	8
3.8	5.4	5.4	8	8
4	5.9	5.9	8	8
4.1	5.9	5.9	8	8
4.2	5.9	5.9	8	8
4.3	5.9	5.9	8	8
4.4	5.9	5.9	8	8
4.5	6.4	6.4	8	8
4.6	6.4	6.4	8	8
4.7	6.4	6.4	8	8
4.8	6.4	6.4	8	8
4.9	6.4	6.4	8	8
5	7.4	7.4	10	10
5.1	7.4	7.4	10	10
5.2	7.4	7.4	10	10
5.5	8.5	8.5	10	10
5.6	8.5	8.5	10	10
6	9.5	9.5	10	10
6.1	9.5	9.5	10	10
6.2	9.5	9.5	10	10
6.3	9.5	9.5	10	10
6.4	9.5	9.5	10	10
6.5	10.5	10.5	12	12
7	10.5	10.5	12	12
7.5	11.5	11.5	12	12
7.7	11.5	11.5	12	12
8	11.5	11.5	12	12
8.1	11.5	11.5	12	12
8.5	13.5	13	15	12
9	13.5	13	15	12
9.5	14.5	13	15	12
10	14.5	13	15	12
10.5	15.5	13	15	15
11	15.5	13	15	15
11.5	16.5	13	15	15
12	16.5	13	15	15
12.5	17.5	13	15	15
13	17.5	13	15	15
13.5	18.5	13	15	15
14	18.5	13	15	15
14.5	19.5	13	15	15
15	19.5	13	15	15
15.5	20.5	13	15	15
16	20.5	13	15	15
17	21.5	16	15	15
18	22.5	16	15	15
19	23.5	16	15	15
19.5	25.5	16	15	15
20	25.5	16	15	15



2284.00.



材料:  
HSS, 进行硬化处理 62-66 HRC  
结构:  
退火和磨削

订购示例:

用于带喇叭颈冲头的引导扩孔 = 2284.00.  
切削冲头的轴径 d<sub>1</sub> = 5.6 mm = 0560  
订购编号 = 2284.00. 0560