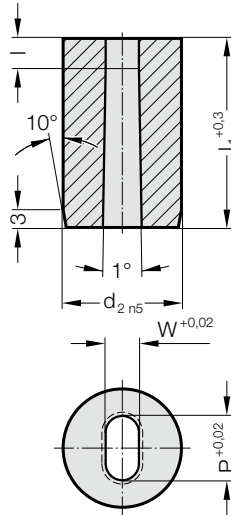


# 精密冲裁凹模 无凸缘，长孔，汽车标准



2645.



$G = P$

## 2645. 精密冲裁凹模 无凸缘，长孔，汽车标准

$d_2$ / 订购数字	$W_{min}$	$G_{max}$	l / 订购数字	$l_1$ / (订货字母)	13 (A)	16 (B)	20 (C)	22 (D)	25 (E)	28 (F)	30 (G)	32 (H)	35 (J)	40 (K)
10 / (4)	1.3	6.8	3 (2) 4 (3) 5 (4)		●	●	●	●	●	●	●	●	●	●
13 / (5)	1.9	8.8	3 (2) 5 (4) 8 (6)		●	●	●	●	●	●	●	●	●	●
16 / (6)	1.9	10.8	3 (2) 5 (4) 8 (6)				●	●	●	●	●	●	●	●
20 / (7)	1.9	13.6	3 (2) 5 (4) 10 (7)				●	●	●	●	●	●	●	●
22 / (8)	1.9	15	3 (2) 6 (5) 10 (7)				●	●	●	●	●	●	●	●
25 / (9)	1.9	17	3 (2) 6 (5) 10 (7)				●	●	●	●	●	●	●	●
32 / (10)	1.9	22	3 (2) 6 (5) 12 (8)				●	●	●	●	●	●	●	●
38 / (11)	1.9	27	3 (2) 8 (6) 12 (8)				●	●	●	●	●	●	●	●
40 / (12)	1.9	27	3 (2) 8 (6) 12 (8)					●	●	●	●	●	●	●
45 / (13)	2.4	35	3 (2) 8 (6) 12 (8)					●	●	●	●	●	●	●
50 / (14)	4	40	3 (2) 8 (6) 12 (8)					●	●	●	●	●	●	●
56 / (15)	4	45	3 (2) 8 (6) 12 (8)					●	●	●	●	●	●	●
63 / (16)	4	50	3 (2) 8 (6) 12 (8)					●	●	●	●	●	●	●
71 / (17)	4	56	3 (2) 8 (6) 12 (8)					●	●	●	●	●	●	●
76 / (18)	5.6	60	3 (2) 8 (6) 12 (8)						●	●	●	●	●	●
85 / (19)	5.6	66	3 (2) 8 (6) 12 (8)						●	●	●	●	●	●
90 / (20)	5.6	70	3 (2) 8 (6) 12 (8)						●	●	●	●	●	●
100 / (21)	5.6	78	3 (2) 8 (6) 12 (8)						●	●	●	●	●	●

### 材料:

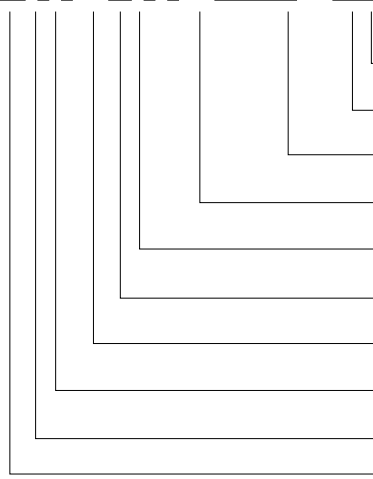
HSS  
硬度 62 ± 2 HRC

### 结构:

磨直径  $d_2$  以及端面。  
特别尺寸请洽询

### 订购示例: 带扭防扭转元素

2 6 4 5 . 10 F 8 . 1 3 5 0 . 0 6 5 0 . A 3

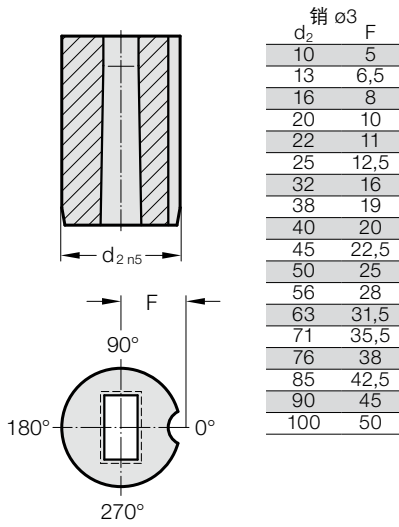


防扭转元素:  
销  $\varnothing$  6 mm  
角度:  
0°  
形状: 长孔, 宽 W  
W = 6,5 mm  
形状: 长孔, 长度 P  
P = 13,5 mm  
成型截面切削刃长度: l  
12 mm  
长度:  $l_1$   
28 mm  
直径:  $d_2$   
32 mm  
型号: 无凸缘  
汽车标准  
规格:  
长孔  
冲裁凹模

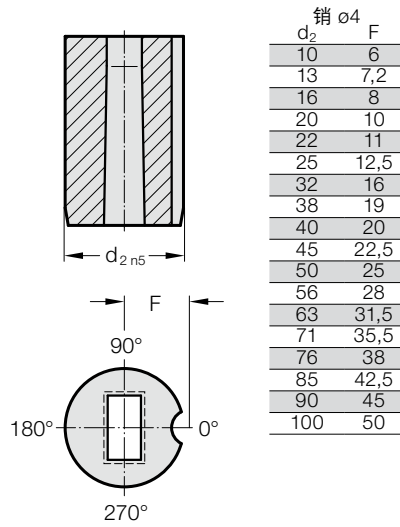
订购数字  
= (3)  
订货字母  
= (A)  
= (0650)  
= (1350)  
订购数字  
= (8)  
订货字母  
= (F)  
订购数字  
= (10)  
订购数字  
= (5)  
订购数字  
= (4)  
= 26

# 精密冲裁凹模 无凸缘，汽车标准，防扭转元素

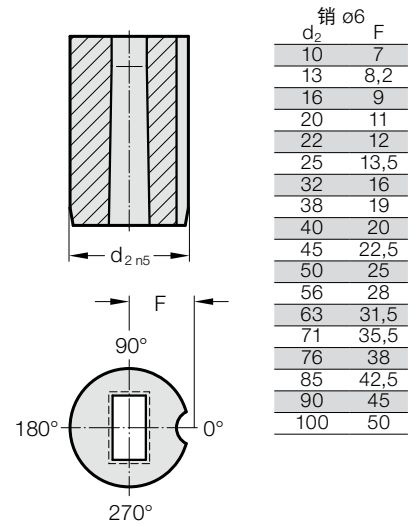
防扭转元素 1 (1)



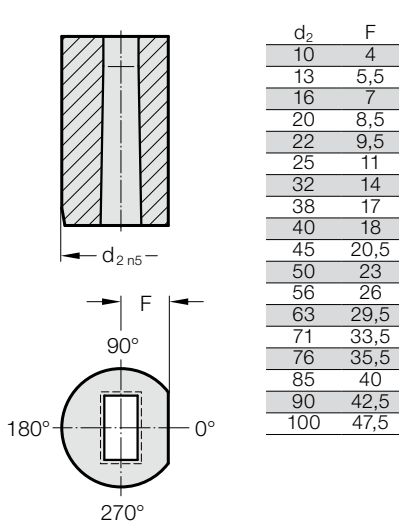
防扭转元素 2 (2)



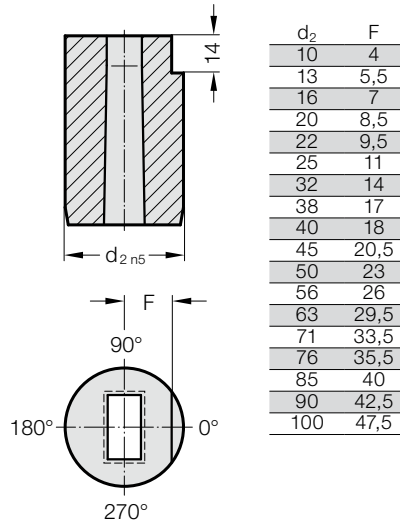
防扭转元素 3 (3)



防扭转元素 4 (4)



防扭转元素 5 (5)



防扭转元素 6 (6)

