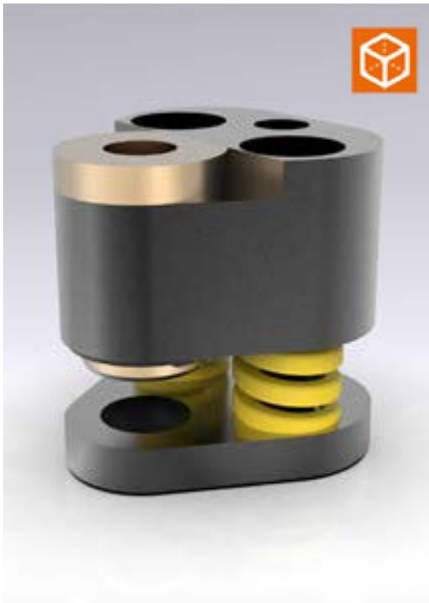
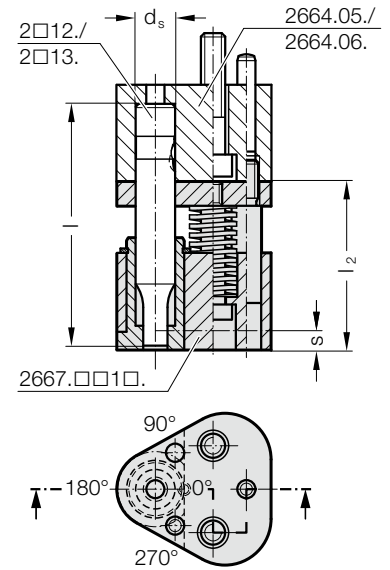
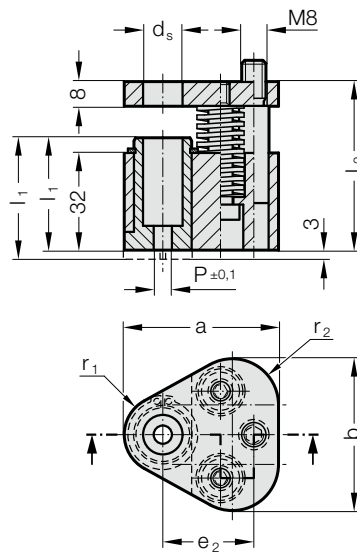


# POLY STRIP STRIPPER UNIT, ROUND, FOR BALL-LOCK PUNCH



2667.□□1□.



## 2667.xx1x. POLY STRIP stripper unit, round, for ball-lock punch

d <sub>s</sub> / (Order Code character)	P	a	b	e <sub>2</sub>	r <sub>1</sub>	r <sub>2</sub>	Punch type					l <sub>1</sub> S <sub>(max)</sub>	37 (A)	40 (B)
							l	SWL	SWS	SWL	SWS			
10 / (F)	1,6 - 9,9	44.5	43.7	26.925	9.5	12	80	90	90	100	100	37	40	
13 / (G)	5 - 12,9	50.8	50	29.97	12.7	15.2	(D)	(G)	(E)	(H)	(F)	6.5	9.5	
16 / (H)	8 - 15,9	54	53.2	31.75	14.3	16.8								
20 / (J)	12 - 19,9	60.3	59.5	33.53	17.5	20								
25 / (K)	16 - 24,9	69.9	69.1	40.64	22.2	24.7								
32 / (L)	24 - 31,9	69.9	69.1	40.64	22.2	24.7								
38 / (M)	30 - 37,9	77.4	76	43.9	26	28.5								
40 / (N)	30 - 39,9	77.4	76	43.9	26	28.5								

d <sub>s</sub> / (Order Code character)	Punch type	Punch length l	Scraper bush l <sub>1</sub>	Stripping force max.[N]	SWL	SWL	SWL	SWL	SWL	SWL	SWS	SWS	SWS	SWS
					080	080	090	090	100	100	090	090	100	100
10 / (F)		37	37	1022	884	1280	810	786	1098	1022	884	1280	810	
13 / (G)				1022	884	1280	810	786	1098	1022	884	1280	810	
16 / (H)				2856	1668	3128	1282	1920	2688	2856	1668	3128	1282	
20 / (J)				5049	2714	5124	2180	3120	4368	5049	2714	5124	2180	
25 / (K)				5049	2714	5124	2180	3120	4368	5049	2714	5124	2180	
32 / (L)				5049	2714	5124	2180	3120	4368	5049	2714	5124	2180	
38 / (M)				5049	2714	5124	2180	3120	4368					
40 / (N)										5049	2714	5124	2180	

### Description:

The brush cleaner unit is suitable for use with exterior skin panels.  
Use with triangular mounting plate, for ball-lock punch 2664.05./06./10.

### Material:

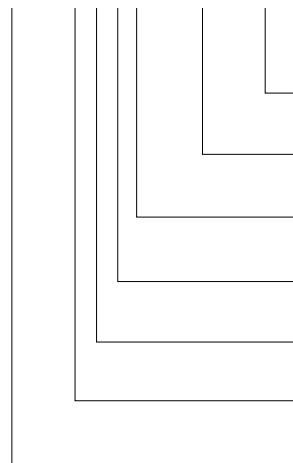
Scraper bush: CuZn25Al5 (no. 2.0598)  
Scraper plate: 40CrMnMoS8-6 (no. 1.2312)  
Pressure plate: 40CrMnMoS8-6 (no. 1.2312)

### Note:

The stripper unit is available in 2 variants: Standard (A) and Long (B).  
Long variant of the stripper unit with 3 mm projecting edge suitable for retrofitting a contour.  
Choose the position of the cutting form in the scraper bush in accordance with the position of the installed punch in the mounting plate.

### Ordering Code (example):

**2667.FE1A.0400.A**



**Cutting form position:** 0° **Order Code character** = (A)  
**Shape: round P** P = ø4,0 mm **Order Code character** = 0400  
**Scraper bush length: l<sub>1</sub>** Standard **Order Code character** = (A)  
**Cutting form:** round **Order No** = (1)  
**Punch type/length: l** SWL / l = 90 mm **Order Code character** = (E)  
**Punch diameter: d<sub>1</sub>** d<sub>1</sub> = 10 mm **Order Code character** = (F)  
**Stripper unit** POLY STRIP **Order Code character** = 2667