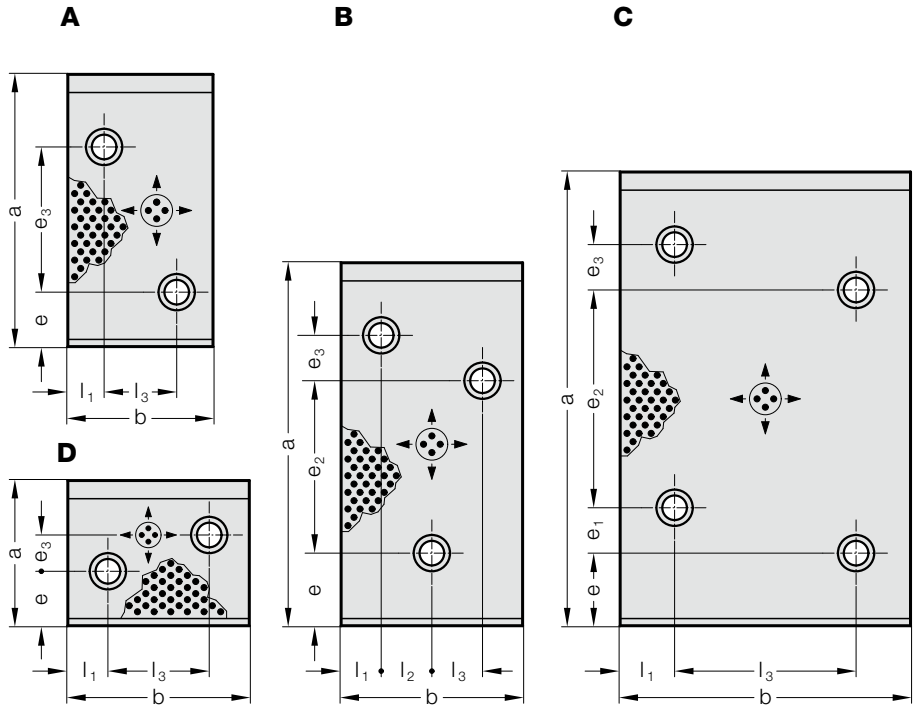


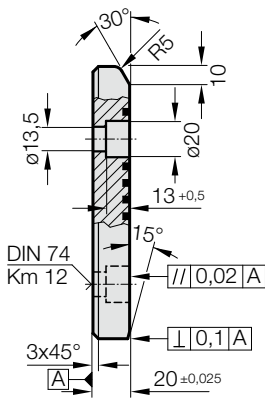
SLIDING PAD, BRONZE WITH SOLID LUBRICANT, NAAMS



2960.79.



2960.79.



Material:

Bronze with solid lubricant, oilless lubricating

Note:

Screws are not included.

Fixing:

Use socket cap screws
DIN EN ISO 4762 M12.

2960.79. Sliding pad, Bronze with solid lubricant, NAAMS

Order No	Shape	b	a	l ₁	l ₂	l ₃	e	e ₁	e ₂	e ₃	Number of screw holes
2960.79.050.100	A	50	100	25	-	-	30	-	-	30	2
2960.79.050.150	A	50	150	25	-	-	30	-	-	80	2
2960.79.050.200	A	50	200	25	-	-	40	-	-	120	2
2960.79.080.100	A	80	100	20	-	40	30	-	-	30	2
2960.79.080.150	A	80	150	20	-	40	30	-	-	80	2
2960.79.080.200	A	80	200	20	-	40	40	-	-	120	2
2960.79.080.250	A	80	250	20	-	40	40	-	-	170	2
2960.79.080.315	B	80	315	20	20	20	40	-	210	25	3
2960.79.100.050	D	100	50	22	-	56	14	-	-	13	2
2960.79.100.080	D	100	80	22	-	56	30	-	-	20	2
2960.79.100.100	A	100	100	22	-	56	30	-	-	30	2
2960.79.100.150	A	100	150	22	-	56	30	-	-	80	2
2960.79.100.200	B	100	200	22	28	28	40	-	95	25	3
2960.79.100.250	B	100	250	22	28	28	40	-	145	25	3
2960.79.100.315	B	100	315	22	28	28	40	-	210	25	3
2960.79.125.080	D	125	80	25	-	75	30	-	-	20	2
2960.79.125.100	A	125	100	25	-	75	30	-	-	30	2
2960.79.125.150	A	125	150	25	-	75	30	-	-	80	2
2960.79.125.200	B	125	200	25	37	38	40	-	95	25	3
2960.79.125.250	B	125	250	25	37	38	40	-	145	25	3
2960.79.125.315	C	125	315	25	-	75	40	25	185	25	4
2960.79.160.100	A	160	100	30	-	100	30	-	-	30	2
2960.79.160.150	A	160	150	30	-	100	30	-	-	80	2
2960.79.160.200	B	160	200	30	50	50	40	-	95	25	3
2960.79.160.250	C	160	250	30	-	100	40	25	120	25	4
2960.79.160.315	C	160	315	30	-	100	40	25	185	25	4