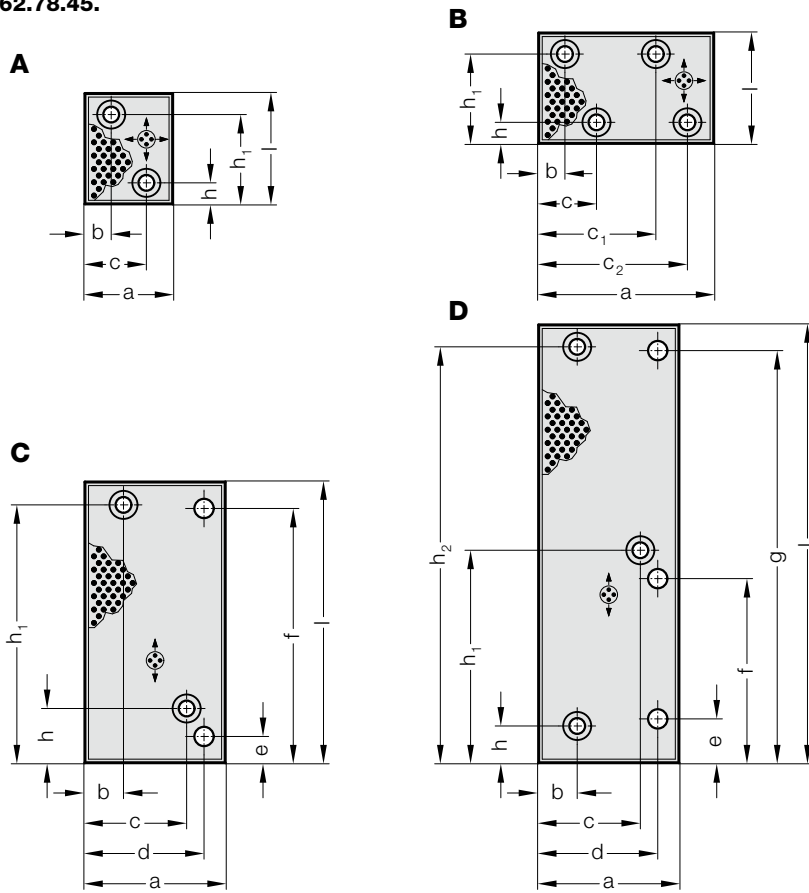


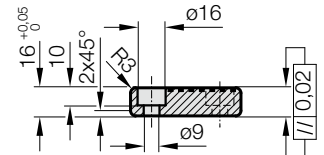
滑板，带固态润滑剂的青铜，CNOMO

2962.78.45.

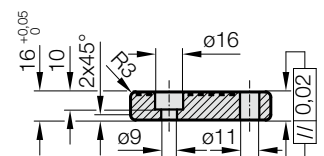


2962.78.45.

A, B



C, D



2962.78.45. 滑板，带固态润滑剂的青铜，CNOMO

订购编号	形状	a	l	b	c	c ₁	c ₂	d	e	f	g	h	h ₁	h ₂	沉头螺栓	螺栓孔数量
2962.78.45.050.16.063	A	50	63	15	35	-	-	-	-	-	-	12	51	-	2	-
2962.78.45.050.16.160	C	50	160	19	31	-	-	-	-	-	-	21	147	-	2	-
2962.78.45.050.16.250	D	50	250	19	31	-	-	-	-	-	-	21	121	237	3	-
2962.78.45.080.16.160	C	80	160	22	58	-	-	68	15	145	-	31	147	-	2	2
2962.78.45.080.16.250	D	80	250	22	58	-	-	68	25	105	235	21	121	237	3	3
2962.78.45.100.16.063	B	100	63	15	33	67	85	-	-	-	-	12	51	-	4	-

材料:

带固态润滑剂的铜，易维护

说明:

不提供螺栓。

固定件:

使用符合 DIN EN ISO 4762 M8 标准的圆柱头螺栓。