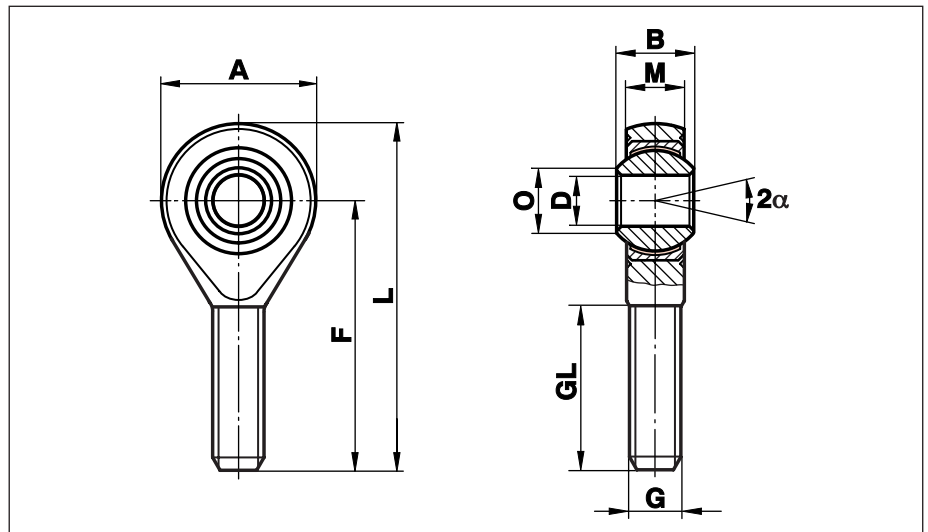


Rod End Motor Sport Maintenance Free

Series GAXSW..MS

Rod Ends with male thread made from heat-treated steel, nickel plated with PTFE-liner, maintenance free. Preloaded bearing

For use at highest dynamic pressure and tension loads in corrosive environments



Description	DH7	B	M	A	F	L	O	G	GL	static radial load C ₀ kN	dynamic radial load C ₀ kN		weight gr
GAXSW 6 MS	6	9	6,75	20	36	46	8,9	M 6x1	22	9,8	9,8	13 _i	20
GAXSW 8 MS	8	12	9,00	24	42	54	10,4	M 8 x1,25	25	19,5	19,5	14 _i	33
GAXSW 8x1 MS	8	12	9,00	24	42	54	10,4	M 8 x1	25	19,5	19,5	14 _i	33
GAXSW 10 MS	10	14	10,50	28	48	62	12,9	M 10x1,5	29	31,4	28,1	13 _i	56
GAXSW 10x1,25 MS	10	14	10,50	28	48	62	12,9	M 10x1,25	29	31,4	28,1	13 _i	56
GAXSW 10x1 MS	10	14	10,50	28	48	62	12,9	M 10x1	29	31,4	28,1	13 _i	56
GAXSW 12 MS	12	16	12,00	32	54	70	15,4	M 12x1,75	33	42,0	38,4	13 _i	87
GAXSW 12x1,5 MS	12	16	12,00	32	54	70	15,4	M 12x1,5	33	42,0	38,4	13 _i	87
GAXSW 12x1,25 MS	12	16	12,00	32	54	70	15,4	M 12x1,25	33	42,0	38,4	13 _i	87
GAXSW 14 MS	14	19	13,50	36	60	78	16,8	M 14x2	38	57,0	50,5	16 _i	129
GAXSW 14x1,5 MS	14	19	13,50	36	60	78	16,8	M 14x1,5	38	57,0	50,5	16 _i	129
GAXSW 16 MS	16	21	15,00	42	66	87	19,3	M 16x2	40	67,0	63,0	15 _i	189
GAXSW 16x1,5 MS	16	21	15,00	42	66	87	19,3	M 16x1,5	40	67,0	63,0	15 _i	189
GAXSW 18 MS	18	23	16,50	46	72	95	21,8	M 18x1,5	44	81,5	76,5	15 _i	267
GAXSW 20 MS	20	25	18,00	50	78	103	24,3	M 20x1,5	47	93,5	93,5	14 _i	348
GAXSW 25 MS	25	31	22,00	60	94	124	29,6	M 24x2	58	135,0	135,0	15 _i	600

Rod Ends with reduced bore:

Description	DH7	B	M	A	F	L	O	G	GL	static radial load C ₀ kN	dynamic radial load C ₀ kN	¹⁾	weight gr
GAXSW 10.8 MS	8	14	10,50	28	48	62	12,9	M 10x1	29	31,4	28,1	13 _i	56
GAXSW 12.10 MS	10	16	12,00	32	54	70	15,4	M 12x1,5	33	42,0	38,4	13 _i	87
GAXSW 14.12 MS	12	19	13,50	36	60	78	16,8	M 14x1,5	38	57,0	50,5	16 _i	129
GAXSW 16.14 MS	14	21	15,00	42	66	87	19,3	M 16x1,5	40	67,0	63,0	15 _i	189
GAXSW 18.16 MS	16	23	16,50	46	72	95	21,8	M 18x1,5	44	81,5	76,5	15 _i	267

Materials:

- Housing: Heat-treated steel to 42CrMo4, Aisi 4140 forged, polished, nickel plated with high polish finish
- Insert: Stainless steel to 1.4571, Aisi 316Ti with PTFE liner bonded to the inner surface
- Ball: Bearing steel to 100Cr6, Aisi 52100 hardened, ground, polished, hard chrome plated
- Clearance: preloaded, zero tolerance
- On request: with left hand thread, threaded bolt and further sizes are available

¹⁾ The reduced bore diameter offers to the engineer the possibility to construct a bearing with a very high pivoting angle, especially when a minimal shaft collar is used (in some cases twice as high as standard listing).