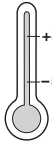




# DryLin® SET | EasyTube

This addition to the DryLin® slide table range has an effective but yet solid design, the complete system only consists of a few components. The anodised aluminium tube guides the slide carriage and at the same time protects the leadscrew. The carriage and the trapezoidal nut are manufactured from a high performance polymer bearing material. The system runs without any lubrication, and gives a low friction value combined with an excellent wear rate. Also, iglidur® plain bearings are used in the axial fixing of the leadscrew.



3 Dimensions  
2 Styles

mm

DryLin® SET

Phone +49 - 22 03 - 96 49-145  
Fax +49 - 22 03 - 96 49-334

iglus® GmbH  
51147 Cologne

Internet [www.igus.de](http://www.igus.de)  
E-mail [info@igus.de](mailto:info@igus.de)

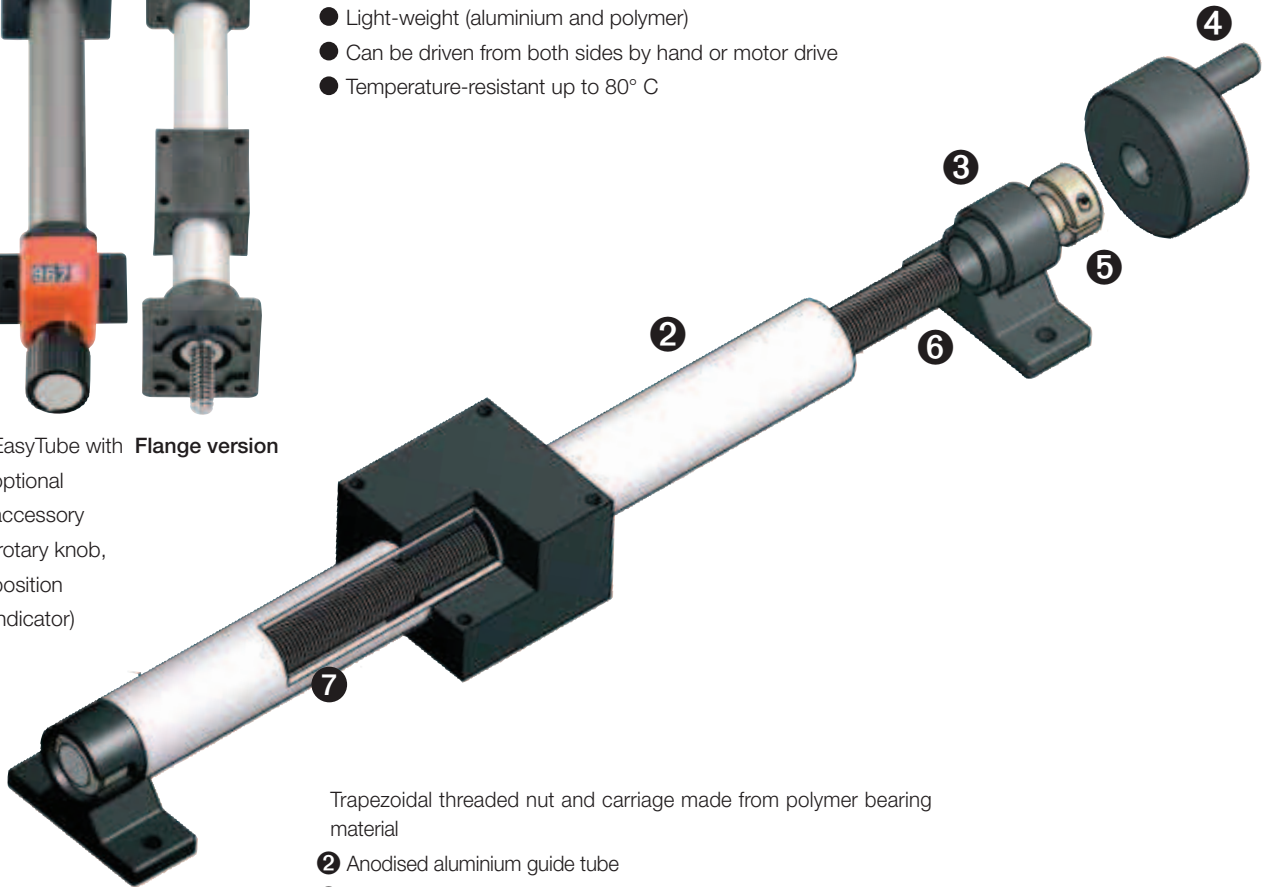
66.12



EasyTube with Flange version  
optional  
accessory  
(rotary knob,  
position  
indicator)

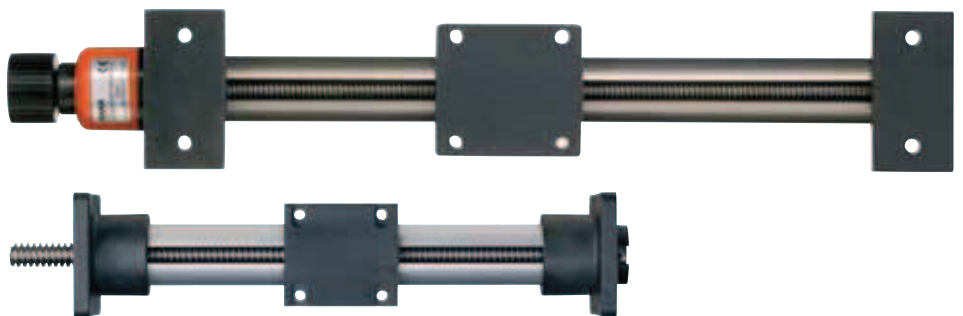
## Advantages

- Totally lubrication-free
- Corrosion-resistant when specified with a stainless leadscrew
- Light-weight (aluminium and polymer)
- Can be driven from both sides by hand or motor drive
- Temperature-resistant up to 80° C

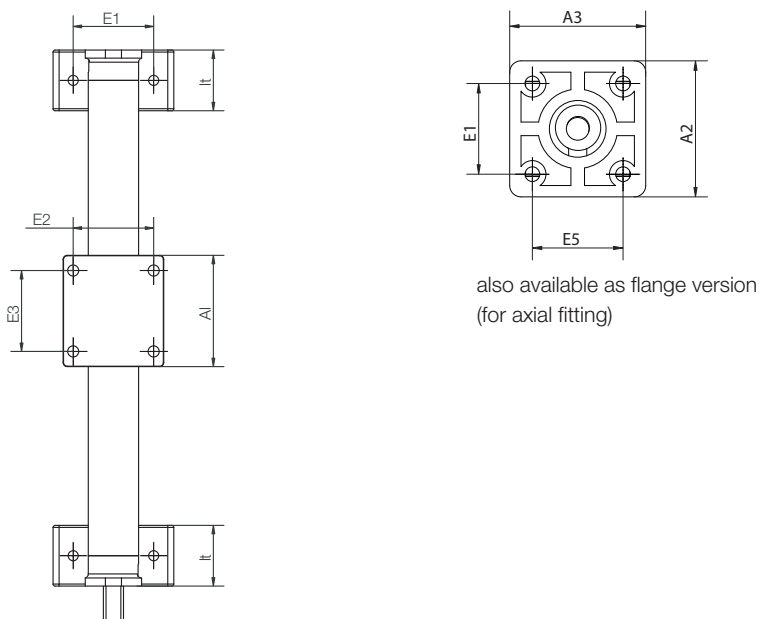
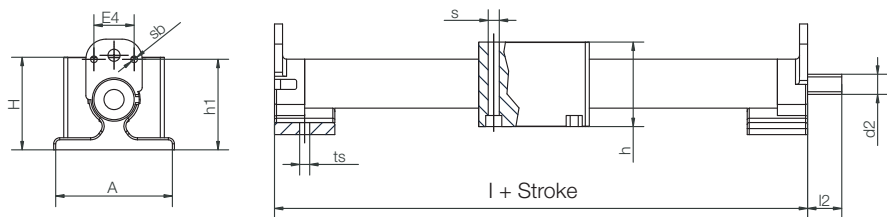
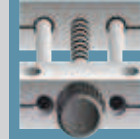


Trapezoidal threaded nut and carriage made from polymer bearing material

- 2 Anodised aluminium guide tube
- 3 Radial and axial bearings made from polymer bearing material
- 4 Hand wheel
- 5 Stainless steel clamp
- 6 Polymer end block
- 7 Steel trapezoidal leadscrew



Flange version



DryLin® SET  
mm

Phone +49 - 22 03 - 96 49-145  
Fax +49 - 22 03 - 96 49-334

## Lengths [mm] and Weight

Part No.	Maximum Stroke length [mm]	Aluminium Shaft		Max. static load-bearing capacity	
		Weight end blocks and carriage [kg]	add. (per 100 mm) [kg]	axial [N]	radial [N]
SET-12-AWM	200	0,05	0,03	10	20
SET-25-AWM	750	0,15	0,12	150	300
SET-30-AWM	850	0,20	0,21	200	400

## Dimensions [mm]

Part No.	A	A1	H	E1	E2	E3	E4	l	h	h1	lt	ts	s	sb	l2	d2
SET-12-AWM	30	30	23,5	20	20	20	-	60	22	-	15	3,3	4,2	-	10	M4*
SET-25-AWM	60	55	44	40	40	40	20	115	39	45	30	5,2	5,2	M4	17	TR10x2*
SET-30-AWM	80	55	49	60	40	40	20	125	39	50	35	6,5	5,2	M4	20	TR12x3*

## Dimensions [mm] – flange version

Part No.	A2	A3	H	E1	E2	E3	E5	l	h	lt	ts	s	l2	d2
SET-25-AWM-F	60	60	49	40	40	40	40	117	39	30	5,2	5,2	27	TR10x2*
SET-30-AWM-F	80	60	59	60	40	40	40	125	39	35	6,5	5,2	30	TR12x3*

\* leadscrew end unmachined

