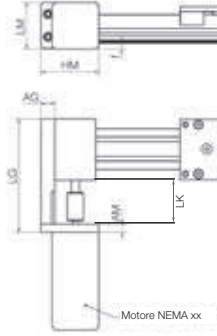


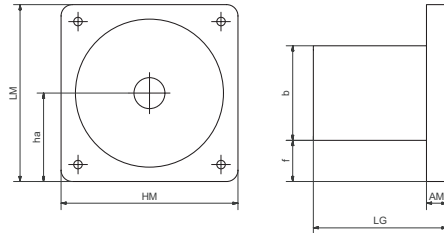
Motor flange for toothed belt axes



- 2 base plate lengths for each NEMA motor flange, others on request
- Matches the igus® coupling ► [page 1247](#)

Part number	matching linear modules	Base plate			Motor flange			
		AG	LG	LK	AM	HM	LM	f
MF-0630-NEMA17-S	ZLW-0630	12	99.5	35.5	10	53	42	7
MF-0630-NEMA23-S	ZLW-0630	12	99.5	35.5	10	59	56	14
MF-1040-NEMA17-S	ZLW-1040	17	119	35	10	63	44	-
MF-1040-NEMA23-S	ZLW-1040	17	119	35	10	70.7	56.4	7
MF-1040-NEMA34-L	ZLW-1040	17	138	54	10	85	85	20.5
MF-1660-NEMA34-S	ZLW-1660	10	166	52	10	86	86	-
MF-2260-NEMA23-S	ZAW-1040	10	108	35	10	70.7	56.4	-
MF-0630-DC0310	ZLW-0630	12	99.5	35.5	10	53	42	7
MF-1040-DC0310	ZLW-1040	17	119	35	10	63	44	-

Motor flange for lead screw drives

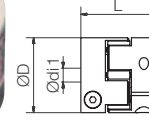


The motor flange, sometimes called motor enclosure, encloses and protects the coupling and provides the matching mounting dimensions for your NEMA motor.

- Matches the igus® coupling ► [page 1247](#)

Part number	matching linear modules	LG	AM	HM	LM	b	f	ha
MF-1123-NEMA17	SAW/SLW-BB-0630	45	-	43	43	43	-	21.5
MF-2040-NEMA17	SAW/SLW-1040-AL, SHT-12	47	12	43	43	43	-	21.5
MF-2040-NEMA23-S	SAW/SLW-1040-AL SHT-12/20	48	13	56	56	56	-	28
MF-3648-NEMA23	SHT-20, SHT-BB-20	56	13	56	56	56	-	28
MF-3648-NEMA34	SLW-1660/2080, SLW-BB-1660/2080	65	10	86	86	46	20	43
MF-3648-NEMA34-XL	SHT-30, SHT-BB-30	76	10	86	86	56	15	43
MF-1123-DC0310	SAW/SLW-BB-0630	45	-	43	43	43	-	21.5
MF-2040-DC0310	SAW/SLW-1040-AL, SHT12	47	12	43	43	43	-	21.5

Couplings



The coupling connects the drive shaft of the axis to the motor. An elastic polymer insert in the center of the coupling transfers the motor torque.

This damping element compensates for radial and axial clearance.

- 20 versions from stock
- Vibration dampening and easy fitting

Coupling material: aluminum. TPU elastomeric centre. Shore hardness: 98 Sh A. Temperature range -30°C to +100°C.

Toothed belt axis	Motor type	Coupling	Techn. data - coupling				
			D	di1 [mm]	di2 [mm]	L [mm]	Weight [kg]
ZLW-0630-B	NEMA17	COU-AR-K-050-000-25-26-B-AAAB	25.00	5.00	6.00 □	26.00	0.02
	NEMA23	COU-AR-K-063-000-25-26-B-AAAB	25.00	6.35	6.00 □	26.00	0.02
	DC-Motor31	COU-AR-K-060-000-25-26-B-AAAB	25.00	6.00	6.00 □	26.00	0.02
ZLW-0630-S	NEMA17	COU-AR-K-050-080-25-26-B-AAAA	25.00	5.00	8.00	26.00	0.02
	NEMA23	COU-AR-K-063-080-25-26-B-AAAA	25.00	6.35	8.00	26.00	0.02
	DC-Motor31	COU-AR-K-060-080-25-26-B-AAAA	25.00	6.00	8.00	26.00	0.02
ZLW-1040-B / ZAW	NEMA17	COU-AR-K-050-000-25-26-B-AAAB	25.00	5.00	6.00 □	26.00	0.02
	NEMA23	COU-AR-K-063-000-25-26-B-AAAB	25.00	6.35	6.00 □	26.00	0.02
	NEMA23XL	COU-AR-K-080-000-25-26-B-AAAB	25.00	8.00	6.00 □	26.00	0.02
	DC-Motor31	COU-AR-K-060-000-25-26-B-AAAB	25.00	6.00	6.00 □	26.00	0.02
ZLW-1040-S / ZAW	NEMA23	COU-AR-K-063-100-32-32-B-AAAA	32.00	6.35	10.00	32.00	0.05
	NEMA23XL	COU-AR-K-080-100-32-32-B-AAAA	32.00	8.00	10.00	32.00	0.05
	NEMA34	COU-AR-K-140-100-32-32-B-AAAA	32.00	14.00	10.00	32.00	0.05
	DC-Motor31	COU-AR-K-060-100-32-32-B-AAAA	32.00	6.00	10.00	32.00	0.05
ZLW-1660-S	NEMA 34	COU-AR-K-140-140-32-32-B-AAAA	32.00	14.00	14.00	32.00	0.05
Lead screw axis	Motor type	Coupling	D	di1 [mm]	di2 [mm]	L [mm]	Weight [kg]
SAW-0630 / SLW-BB-0630	NEMA17	COU-AR-K-050-080-25-26-B-AAAA	25.00	5.00	8.00	26.00	0.02
	DC-Motor31	COU-AR-K-060-080-25-26-B-AAAA	25.00	6.00	8.00	26.00	0.02
SAW-1040 / SLW-(BB)-1040	NEMA17	COU-AR-K-050-100-32-32-B-AAAA	32.00	5.00	10.00	32.00	0.05
	NEMA23	COU-AR-K-063-100-32-32-B-AAAA	32.00	6.35	10.00	32.00	0.05
	NEMA23XL	COU-AR-K-080-100-32-32-B-AAAA	32.00	8.00	10.00	32.00	0.05
	DC-Motor31	COU-AR-K-060-100-32-32-B-AAAA	32.00	6.00	10.00	32.00	0.05
SLW-(BB)-1660	NEMA23	COU-AR-K-063-140-32-32-B-AAAA	32.00	6.35	14.00	32.00	0.05
	NEMA23XL	COU-AR-K-080-140-32-32-B-AAAA	32.00	8.00	14.00	32.00	0.05
SLW-(BB)-2080	NEMA23	COU-AR-K-063-120-32-32-B-AAAA	32.00	6.35	12.00	32.00	0.05
	NEMA23XL	COU-AR-K-080-120-32-32-B-AAAA	32.00	8.00	12.00	32.00	0.05
	NEMA34	COU-AR-K-140-120-32-32-B-AAAA	32.00	14.00	12.00	32.00	0.05
SHT-(BB)-12	NEMA17	COU-AR-K-050-100-32-32-B-AAAA	32.00	5.00	10.00	32.00	0.05
	NEMA23	COU-AR-K-063-100-32-32-B-AAAA	32.00	6.35	10.00	32.00	0.05
	NEMA23XL	COU-AR-K-080-100-32-32-B-AAAA	32.00	8.00	10.00	32.00	0.05
SHT-(BB)-20	DC-Motor31	COU-AR-K-060-100-32-32-B-AAAA	32.00	6.00	10.00	32.00	0.05
	NEMA23	COU-AR-K-063-120-32-32-B-AAAA	32.00	6.35	12.00	32.00	0.05
	NEMA23XL	COU-AR-K-080-120-32-32-B-AAAA	32.00	8.00	12.00	32.00	0.05
SHT-(BB)-30	NEMA34	COU-AR-K-140-120-32-32-B-AAAA	32.00	14.00	12.00	32.00	0.05
	NEMA34	COU-AR-K-140-140-32-32-B-AAAA	32.00	14.00	14.00	32.00	0.05
	NEMA34	COU-AR-K-140-140-32-32-B-AAAA	32.00	14.00	14.00	32.00	0.05