

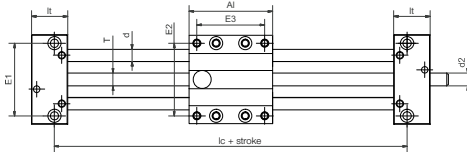


- Trapezoidal or high helix threads
- Ball bearing leadscrew supports
- Rail profile in high design, extremely torsion-resistant
- Aluminium drylin® W guide rails, hard anodised
- High stability
- Cost-effective and 100 % maintenance free
- Available accessories ► Page 1113
- Lead screw nuts are available separately ► Page 1035

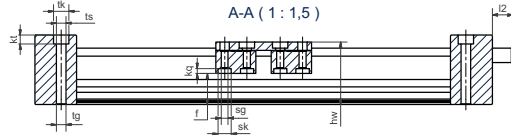
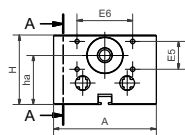


Order key complete ► Page 1094

SAW-1040



► Page 1137



Technical data

Part No.	Stroke length [mm]	Weight [kg]	Additional (per 100 mm)	Max. speed [U/min.]	Max. static load capacity	
					axial [N]	radial [N]
SAW-0630	300	0.5	0.1	1,000	100	400
SAW-1040	500	1.0	0.1	1,500	500	2,000
SAW-1080	750	1.9	0.2	1,500	750	2,000
SAW-1660	750	2.8	0.5	1,500	750	3,000

Dimensions [mm]

Part No.	A	AI	H	E1	E2	E3	E5	E6	I	lc	hw	f	lt
	-0.3	-0.3		+0.15	+0.15	+0.15							±0.1
SAW-0630	54	60/100	32	40	45	51/91	11	23	112/152	92	30	13.5	26
SAW-1040	74	69/100/150	50	60	60	56/87/137	20	40	129/160/210	91	45	22.5	30
SAW-1080	108	100	58	94	94	87	-	-	163	131.5	49	22.5	31.5
SAW-1660	104	150	77	84	86	132	20	40	220	175	72	38.5	35

Part No.	tk	ts	tg	kt	sk	sg	kq	d	T	I2	d2	ha
				±0.1					∅			
SAW-0630	11	6.6	-	20	-	5	10	□5	8	15	Tr8x1.5	21.5
SAW-1040	11	6.8	M8	6.4	9.5	M6	3.5	10	10	17	Tr10x2 ⁹²⁾	35.5
SAW-1080	11	6.8	M8	18	9.5	M6	3.5	10	10	17	∅10	37.5
SAW-1660	15	9.0	M10	8.6	11	M8	5.5	16	14	20	Tr14x4	59.0

⁹²⁾ Lead screw end unmachined

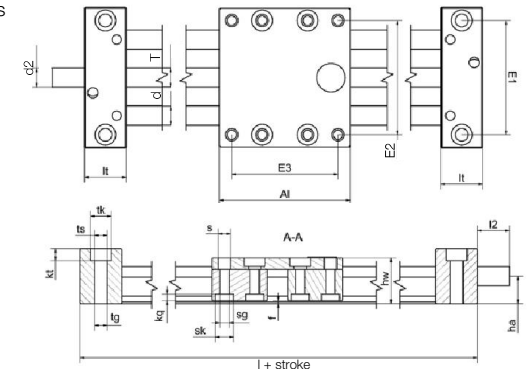
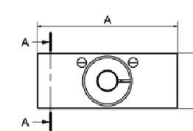
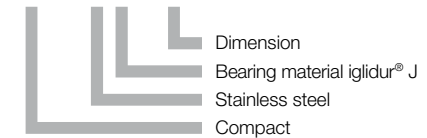


- Stainless steel version with corrosion resistant steel components (1.4305, 1.4408 or 1.4571)
- Choice of bearing material:
iglidur® J = Standard
iglidur® A180 = FDA
iglidur® X = High temperature up to +250 °C
- Available accessories ► Page 1113



Order key complete ► Page 1094

SLW-ESJ-1040



Technical data

Part No.	Shafts-∅	Max. stroke length	Weight [kg]	Additional (per 100 mm)	Max. static load capacity	
	[mm]				[mm]	[kg]
SLW-ESX-1040	10	750	1.4	0.2	700	2,800
SLW-ESA180-1040	10	750	1.4	0.2	700	2,800
SLW-ESJ-2080	20	1,000	5.7	0.64	1,600	6,400
SLW-ESA180-2080	20	1,000	5.7	0.64	1,600	6,400

Dimensions [mm]

Part No.	A	AI	H	E1	E2	E3	I	hw	f	lt	tk	ts	tg
	-0.3	-0.3		±0.15	±0.15	±0.15				±0.1			
SLW-ES-1040	74	100	29	60	60	87	144	24	1.5	22	11	6.8	M8
SLW-ES-2080	134	150	46	116	116	132	206	44	1.5	28	15	8.6	M10

Part No.	kt	s	sk	sg	kq	d	T	I2	d2	ha
	±0.1								Standard	
SLW-ES-1040	6.4	6.6	9.5	M6	4.4	10	Tr10x2	17	Tr10x2 ⁹²⁾	14.5
SLW-ES-2080	8.6	9.0	14	M8	5.5	20	Tr18x4	26	12h9	23.0

⁹²⁾ Lead screw end unmachined