

easytube end fixed

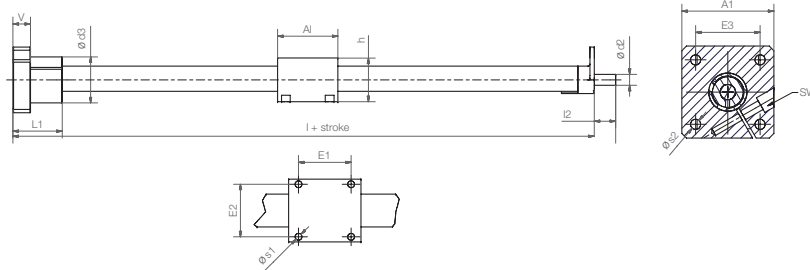


The new carrier flange enables the horizontal and vertical installation of the easytube on one side. Ideal for the positioning of sensors and cameras in format adjustments.

- Easy to handle
- Flexible installation
- Space saving
- Lubrication-free protected leadscrew



Order key
SETB-25-AWM



Technical Data

Part number	Max. length of stroke [mm]	Max. static loadbearing capacity	
		axial [N]	radial at arm [N]
SETB-25-AWM	300	150	12.5

Dimensions [mm]

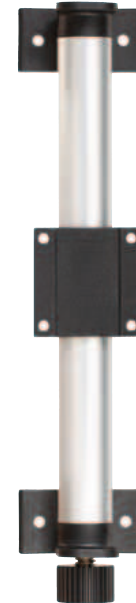
Part number	A1	Al	h	E1	E2	E3	V	L1	I2	d2	d3	I	s1	s2	SW
SETB-25-AWM	60	55	39	40	40	42	16	45	17	TR10x2*	42	147	5.2	6.6	5

* lead screw end unmachined
More dimensions on request

delivery time 2-3 days

prices price list online
www.igus.eu/eu/SETB

weight-optimized carriage option

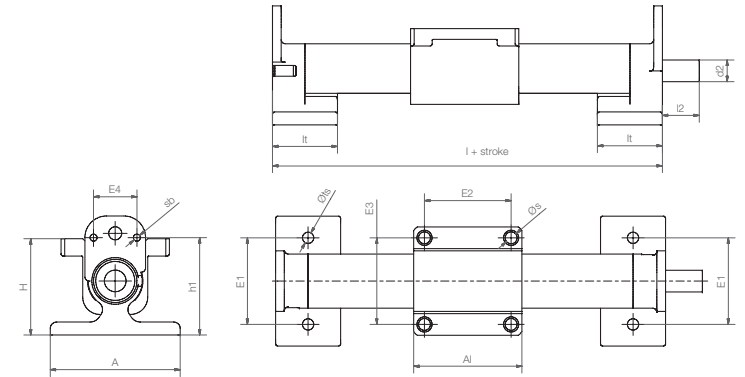
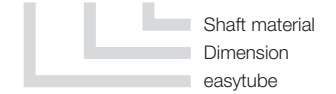


The weight-optimized carriage option of the SET-25 for all cost-sensitive adjustment movements.

- Reduce weight and costs
- Simplified solid assembly
- Light, clean and low noise



Order key
SETC-25-AWM



Technical Data

Part number	Weight [kg]	Max. length of stroke [mm]	Max. static loadbearing capacity	
			axial [N]	radial [N]
SETC-25-AWM	0.15	750	150	300

Dimensions [mm]

Part number	A	Al	H	E1	E2	E3	E4	I	h1	It	ts	s	sb	I2	d2
SETC-25-AWM	60	55	44	40	40	40	20	115	45	30	5.2	5.2	M4	17	TR10x2*

* lead screw end unmachined
More dimensions on request

delivery time 2-3 days

prices price list online
www.igus.eu/eu/SETC