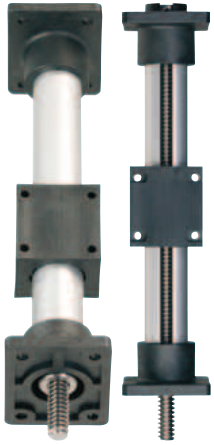


easytube with Flange



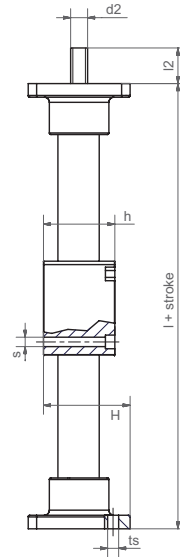
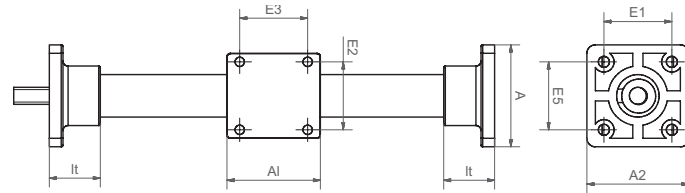
drylin® SET easytube as flanged version for axial mounting

- Lubricant-free
 - Simple, smooth design as requested by our customers
 - Available accessories
- page 1203



Order key

SET-25-AWM-F



Technical Data

Part number	Max. length of stroke [mm]	Aluminum shaft		Max. static load capacity	
		Weight shaft end supports and carriage [kg]	Additional (per 100 mm) [kg]	axial [N]	radial [N]
SET-25-AWM-F	750	0.15	0.12	150	300
SET-30-AWM-F	850	0.20	0.21	200	400

Dimensions [mm] – Flange version

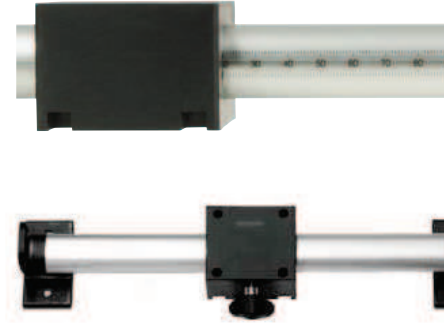
Part number	A1	A2	A3	H	E1	E2	E3	E5	l	h	lt	ts	s	l2	d2
SET-25-AWM-F	55	60	60	49	40	40	40	40	115	39	30	5.2	5.2	27	TR10x2*
SET-30-AWM-F	55	80	60	59	60	40	40	40	125	39	35	6.5	5.2	30	TR12x3*

* lead screw end unmachined

delivery time 2-3 days

prices price list online www.igus.eu/eu/SET-F

easytube with scaling



Order key

SETM-25-AWM-200-SC



drylin® SET easytube with lasered, wash-proof scale

- Totally lubrication-free
- Corrosion-resistant
- Continuously clamped
- Available with/without leadscrew
- Three stroke lengths available from stock: 200, 400 and 600 mm

Technical Data

F radial	N	300
Max. extension at maximum load	mm	66
Max. extension at nominal load 100 N	mm	200
Max. shifting force without load	N	10
Max. holding strength	N	100
Max. stroke length	mm	600

Part number with scaling without lead screw	Part number with scaling and trapezoidal lead screw 10 x 2	Stroke length [mm]
SETM-25-AWM-200-SC	SET-25-AWM-200-SC	200
SETM-25-AWM-400-SC	SET-25-AWM-400-SC	400
SETM-25-AWM-600-SC	SET-25-AWM-600-SC	600

Dimensions see ► page 1197

delivery time 2-3 days

prices price list online www.igus.eu/eu/SETM