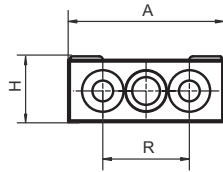
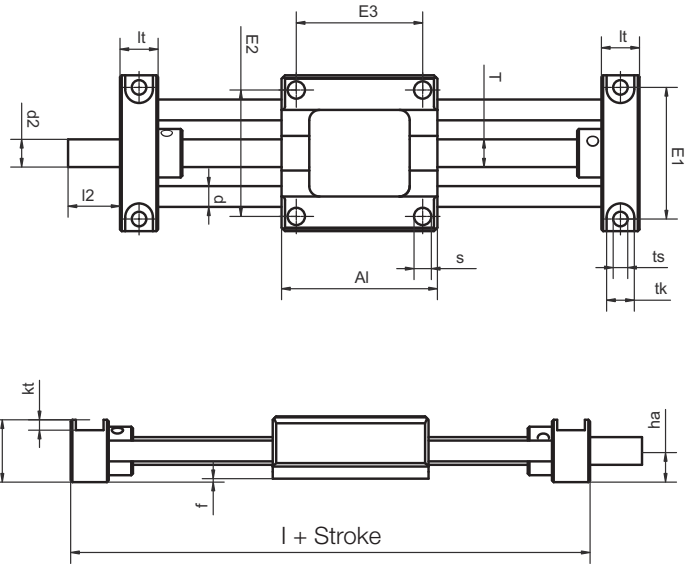




# DryLin® SHTP Mini | small and low-cost

## Properties

- Small version
- Very low weight
- Low cost
- Corrosion resistant
- Accessories available (rotary knob, position indicator ...)
- Carriage and end blocks made from high performance polymers



mm

DryLin® SHT

Phone +49 - 22 03 - 96 49-145  
Fax +49 - 22 03 - 96 49-334

igus® GmbH  
51147 Cologne

## Lengths [mm] and Weight

Part No.	Maximum Stroke length [mm]	Aluminium Shaft		Special Properties
		Weight [kg]	Add. weight [kg] (per 100 mm)	
SHTP-01-06	300	0,11	0,06	Square carriage with four sym. connection bores

## Dimensions [mm]

Part No.	A	Al	H	Ht	E1	E2	E3	I	R	f	lt	tk	ts
SHTP-01-06	45	45	19	18	38	36,5	36,5	67	25	1	11	8	4,2

Part No.	s	sg	d	T	l2	d2*		ha	Max. static load-bearing capacity	
						Standard			axial [N]	radial [N]
SHTP-01-06	5,1	-	6	M8	15	M8		9	50	200

\* Standard versions supplied with leadscrew end unmachined



Order example:  
More details on part no. options: ► Page 66.2

Internet [www.igus.de](http://www.igus.de)  
E-mail [info@igus.de](mailto:info@igus.de)