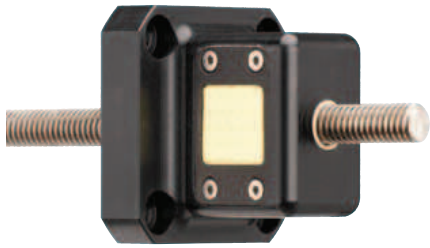
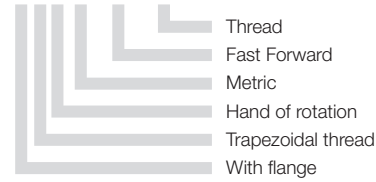


Quick-release nut – Fast forward



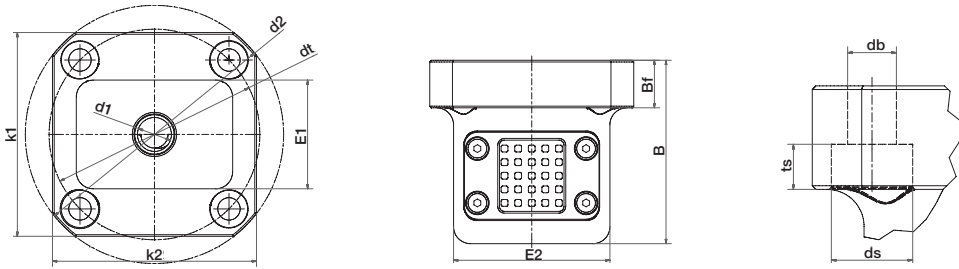
Order key

**FTRM-FF-10x2**



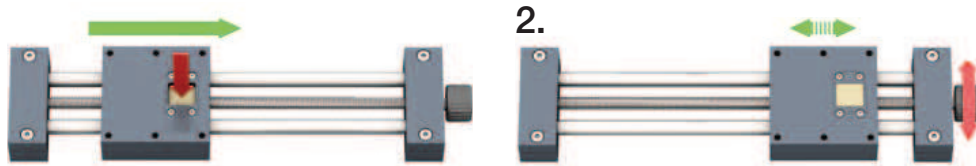
Fast forward mechanism: A combination of accurate positioning and quick manual adjustment with trapezoidal lead screw nuts.

- For quick format adjustments
  - incl. brake by means of self-locking thread design
  - Lubricant-free
  - Housing: AL anodized, screw nut made from iglidur® J
  - Rugged and stable
  - only recommended for horizontal applications
  - Max. axial load stat.: 200 N, dyn.: 50 N
- see SHT-FF ► **page 1166**



Dimensions [mm]

Part number	d1	d2	dt	B	Bf	ts	db	ds	k1	k2	E1	E2
FTRM-FF-10x2	TR-10x2	76	62	54	14	6.1	6.6	11	60	60	32	46



press > disengage > move manually > click into place > fine-tuning

price list online  
[www.igus.eu/eu/ftm-ff](http://www.igus.eu/eu/ftm-ff)

My Sketches

