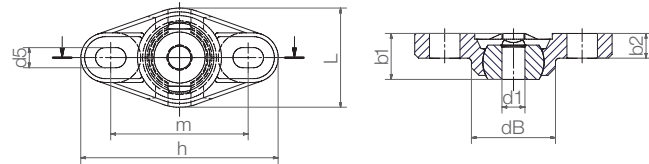
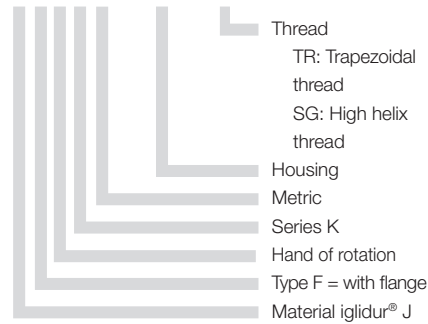


Spherical trapezoidal lead screw nut with spherical ball cap in flanged bearing housing



Order key

JFRKM-EFOM-TR8x1.5



Spherical trapezoidal lead screw nut – Dimensions [mm]

Part number	Effective sup. surface [mm²]	d1	h	L	b1	b2	m	dB	d5	Thread	max. stat. F axial [N]		Pivoting angle	
											stat.	dyn.	stat.	dyn.
JFRKM-EFOM-TR8x1.5	102	8	52	26	12	6.5	36	22.2	5.3x8	TR8x1,5	100	25°	30°	
JFRKM-EFOM-TR10x2	127	10	52	26	12	6.5	36	22.2	5.3x8	TR10x2	100	25°	30°	
JFRKM-EFOM-TR10x3	120	10	52	26	12	6.5	36	22.2	5.3x8	TR10x3	100	25°	30°	

Spherical high helix lead screw nut – Dimensions [mm]

Part number	Effective sup. surface [mm²]	d1	h	L	b1	b2	m	dB	d5	Thread	max. stat. F axial [N]		Pivoting angle	
											stat.	dyn.	stat.	dyn.
JFRKM-EFOM-SG08x15 New!	61	8	52	26	12	6.5	36	22.2	5.3x8	SG08x15	50	25°	30°	
JFRKM-EFOM-SG10x12 New!	82	10	52	26	12	6.5	36	22.2	5.3x8	SG10x12	50	25°	30°	

 delivery from stock
time

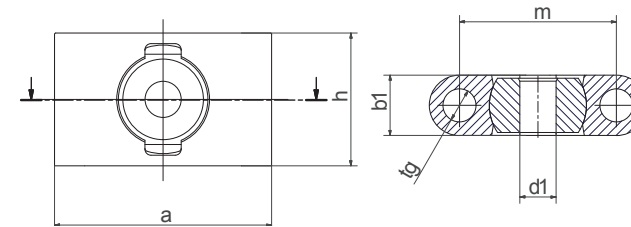
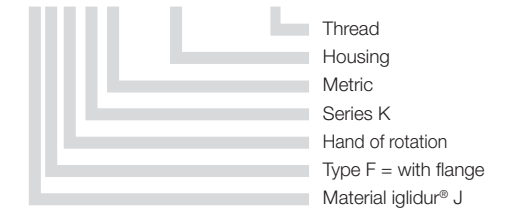
 prices price list online
www.igus.eu/eu/jfrkm-efom
New in this catalog!

Spherical lead screw nut with pillow block bearing housing



Order key

JFRKM-ESTM-TR8x1.5



Dimensions [mm]

Part number	Effective supporting surface [mm²]	h	a	b1	m	tg	Thread	max. stat. F axial [N]	
								stat.	dyn.
JFRKM-ESTM-TR8x1.5 New!	TR8x1.5	22	36	10	26	5.5	TR8x1.5	100	
JFRKM-ESTM-TR10x2 New!	TR10x2	22	36	10	26	5.5	TR10x2	100	
JFRKM-ESTM-TR10x3 New!	TR10x3	22	36	10	26	5.5	TR10x3	100	
JFRKM-ESTM-SG8x15 New!	SG8x15	22	36	10	26	5.5	SG8x15	50	
JFRKM-ESTM-SG10x2 New!	SG10x2	22	36	10	26	5.5	SG10x2	50	

 delivery from stock
time

 prices price list online
www.igus.eu/eu/jfrkm-estm