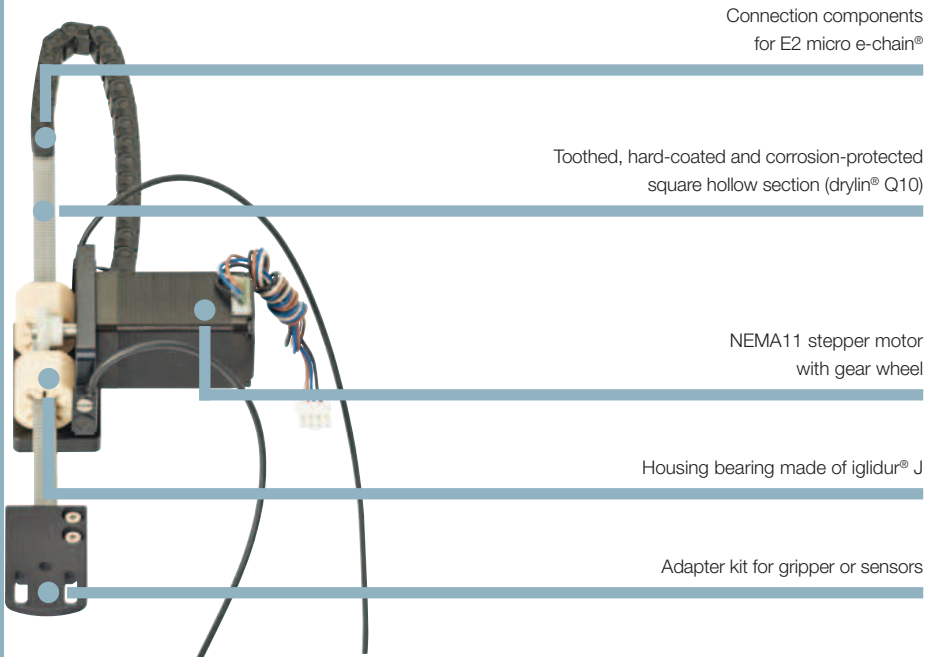


## Gripper axis with rack and pinion drive

Connection components  
for E2 micro e-chain®Toothed, hard-coated and corrosion-protected  
square hollow section (drylin® Q10)NEMA11 stepper motor  
with gear wheel

Housing bearing made of iglidur® J

Adapter kit for gripper or sensors



## Bestellschlüssel:

GRQ-10-A-56-120-11-L-01-000

## Type

## Installation size

## Design

A: Standard

## Length of carriage

56: 56 mm

## Length of stroke

max. 200 mm

## Motor size

NEMA 11

## Motor pin alignment

000: 0° (Standard)

090: 90°

180: 180°

270: 270°

## Proximity switch

01: Without

02: Proximity switch right hand side

03: Proximity switch left hand side

04: Two Proximity switches

## Motor option

L: Litz wires

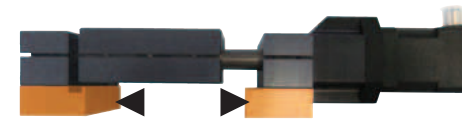
M: Metric connectors

C: Encoders

D: Encoder and brake

## drylin® E | Accessories

## Spacer

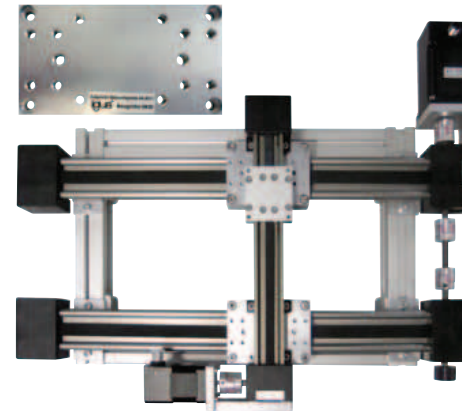


The spacer is an aluminum standoff that brings the selected drylin® linear unit to a height that matches your NEMA motor. An attachment feature for proximity switches is already integrated. Retro-fitting is also possible.

Part number	matching linear modules	Height [mm]	Specification
STY-104001	SLW-1040	21.0	
STY-108002	SLW-1080	21.0	
STY-166006	SLW-1660	24.5	1 spacer with integrated proximity switch tab.
STY-20805	SLW-2080	20.0	Material: anodized aluminum
STY-121001	SHT-12	17.5	
STY-201801	SHT-20	22.0	

Part number	matching linear modules	Specification
AK-0001	SLW-1040	
AK-0002	SLW-1080	
AK-0003	SLW-1660	2 spacers each, with integrated proximity switch tab.
AK-0004	SLW-2080	including screws. Material: anodized aluminum
AK-0006	SHT-12	
AK-0007	SHT-20	

## Adapter kit for simple gantry setup



Using the new adapter kits, multi-axis gantries can be built simply and quickly. The assembly preparation for energy chains is already in place.

- Simple and fast multi-axes gantry setup
- For lead screw and toothed belt axes
- Energy chain assembly preparation
- Anodized aluminum
- Space and weight reducing

## Typical application areas:

Handling systems, filling and retrieval equipment, feed equipment, feeders, pick and place, interlinkage systems, gantries, "intelligent" conveyor belts and transportation systems

Part number	matching linear modules	Specification
AK-0011	ZLW-0630	2 assembly plates for XXY gantry setup, length: 100 mm
AK-0012	ZLW-1040	incl. 12 screws

More information ► [www.igus.eu/eu/drylinE](http://www.igus.eu/eu/drylinE)