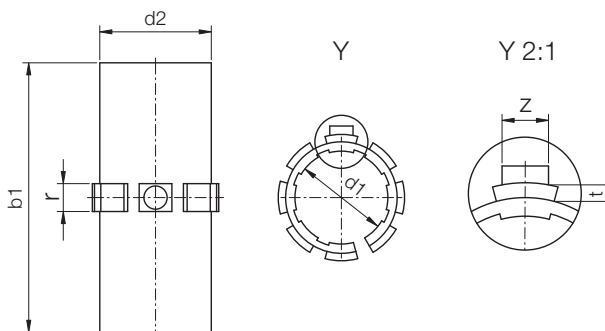




DryLin® R | Liner JUI-01 | Inch

Inch

DryLin® R



Special properties:

- Dimensions to the imperial standard
- Very low coefficients of friction
- Very good wear resistance
- Maintenance-free, self-lubricating
- Vibration dampening
- Very low moisture absorption
- Very good chemical resistance
- Suitable for rotating, oscillating, and linear movements

* According to iglus® testing method
▶ Page 64.67



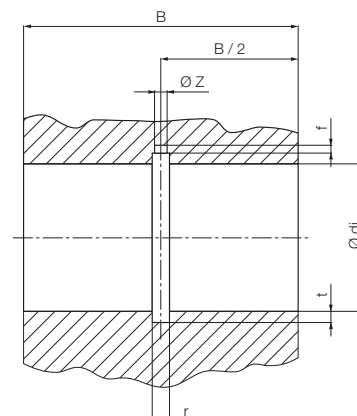
Dimension [Inch]

Part No.	Ø Shaft [inch]	Tolerance* [inch]	d2 [inch]	b1 [inch]	r [inch]	t [inch]	z [inch]
					-0,004 -0,008	-0,004	-0,020
JUI-01-06	3/8	0,0016-0,0024	0,4684	0,846	0,1250	0,0311	0,0866
JUI-01-08	1/2	0,0016-0,0024	0,5934	1,22	0,1250	0,0391	0,1024
JUI-01-10	5/8	0,0016-0,0024	0,7184	1,46	0,1406	0,0391	0,1181
JUI-01-12	3/4	0,0016-0,0024	0,8747	1,575	0,1875	0,0391	0,1339
JUI-01-16	1	0,0016-0,0024	1,1247	2,205	0,1875	0,0391	0,1496
JUI-01-20	1 1/4	0,0020-0,0032	1,4058	2,579	0,1875	0,0391	0,1496
JUI-01-24	1 1/2	0,0020-0,0032	1,6558	2,953	0,2500	0,0625	0,1811
JUI-01-32	2	0,0024-0,0040	2,1871	3,937	0,2813	0,0625	0,2280

Installation Drawings

Housing Bore, Dimensions [Inch]

Part No.	Shaft Size Ø	di [inch]		B [inch]	r [inch]	t [inch]	f [inch]	z [inch]
		Min.	Max.					
JUI-01-06	3/8	,4680	,4684	1,14	,1250	,031	,039	,102
JUI-01-08	1/2	,5940	,5934	1,26	,1250	,031	,059	,122
JUI-01-10	5/8	,7190	,7184	1,42	,1406	,031	,067	,142
JUI-01-12	3/4	,8755	,8747	1,77	,1875	,031	,079	,142
JUI-01-16	1	1,1255	1,1247	2,28	,1875	,031	,079	,161
JUI-01-20	1 1/4	1,4068	1,4058	2,68	,1875	,031	,079	,161
JUI-01-24	1 1/2	1,6568	1,6558	3,15	,2500	,051	,089	,200
JUI-01-32	2	2,1881	2,1871	3,94	,2813	,051	,098	,240



Liner of series JUI-01 are used in:



- RJUI-01: ▶ P. 64.48
- RJUI-03: ▶ P. 64.49
- TJUI-01: ▶ P. 64.50
- TJUI-03: ▶ P. 64.51
- Shafts from ▶ Chapter 65

Phone +49 - 22 03 - 96 49-145
Fax +49 - 22 03 - 96 49-334

iglus® GmbH
51147 Cologne

Internet www.igus.de
E-mail info@igus.de